

**ORDINANCE 2004-14**

**AN ORDINANCE AMENDING THE OFFICIAL ZONING MAP OF TOOELE COUNTY; REZONING CERTAIN PROPERTY IN SECTION 3, TOWNSHIP 3 SOUTH, RANGE 4 WEST, SALT LAKE BASE AND MERIDIAN, FROM RR-5 (RURAL RESIDENTIAL - 5 ACRES) TO C-G (COMMERCIAL GENERAL).**

**THE COUNTY LEGISLATIVE BODY OF THE COUNTY OF TOOELE ORDAINS  
AS FOLLOWS:**

**SECTION I - AMENDMENT:** Having conducted a public hearing thereon and finding good cause therefor, the official zoning map of Tooele County is hereby amended at the request of BRK LLC and Jay Harwood by changing the zoning designation on property in Section 3, Township 3 South, Range 4 West, Salt Lake Base and Meridian, from RR-5 (Rural Residential - 5 acres) to C-G (Commercial General).

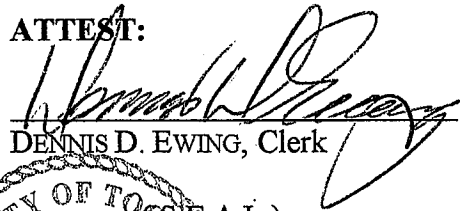
A map showing the area of the rezone is attached hereto and by this reference made a part hereof.

**SECTION II - REPEALER.** Ordinances in conflict herewith are hereby repealed to the extent of such conflict.


**SECTION III - EFFECTIVE DATE.** This ordinance shall take effect fifteen (15) days after its passage, provided the same has been published, with the name of the members voting for and against the same, for at least one publication in one issue of a newspaper published in and having general circulation in Tooele County.

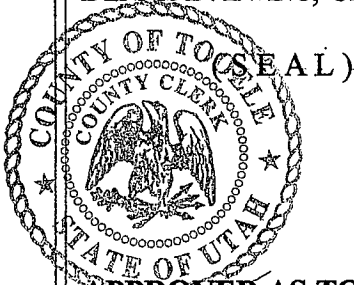
**IN WITNESS WHEREOF,** the legislative body of Tooele County passed, approved and enacted this ordinance this 13<sup>th</sup> day of April 2004.

ATTEST:

  
DENNIS D. EWING, Clerk

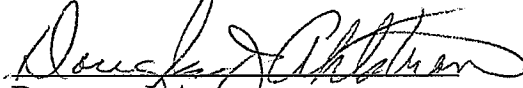
TOOELE COUNTY COMMISSION:

  
DENNIS ROCKWELL, Chairman



Commissioner Rockwell voted aye  
Commissioner White voted aye  
Commissioner Lawrence voted aye

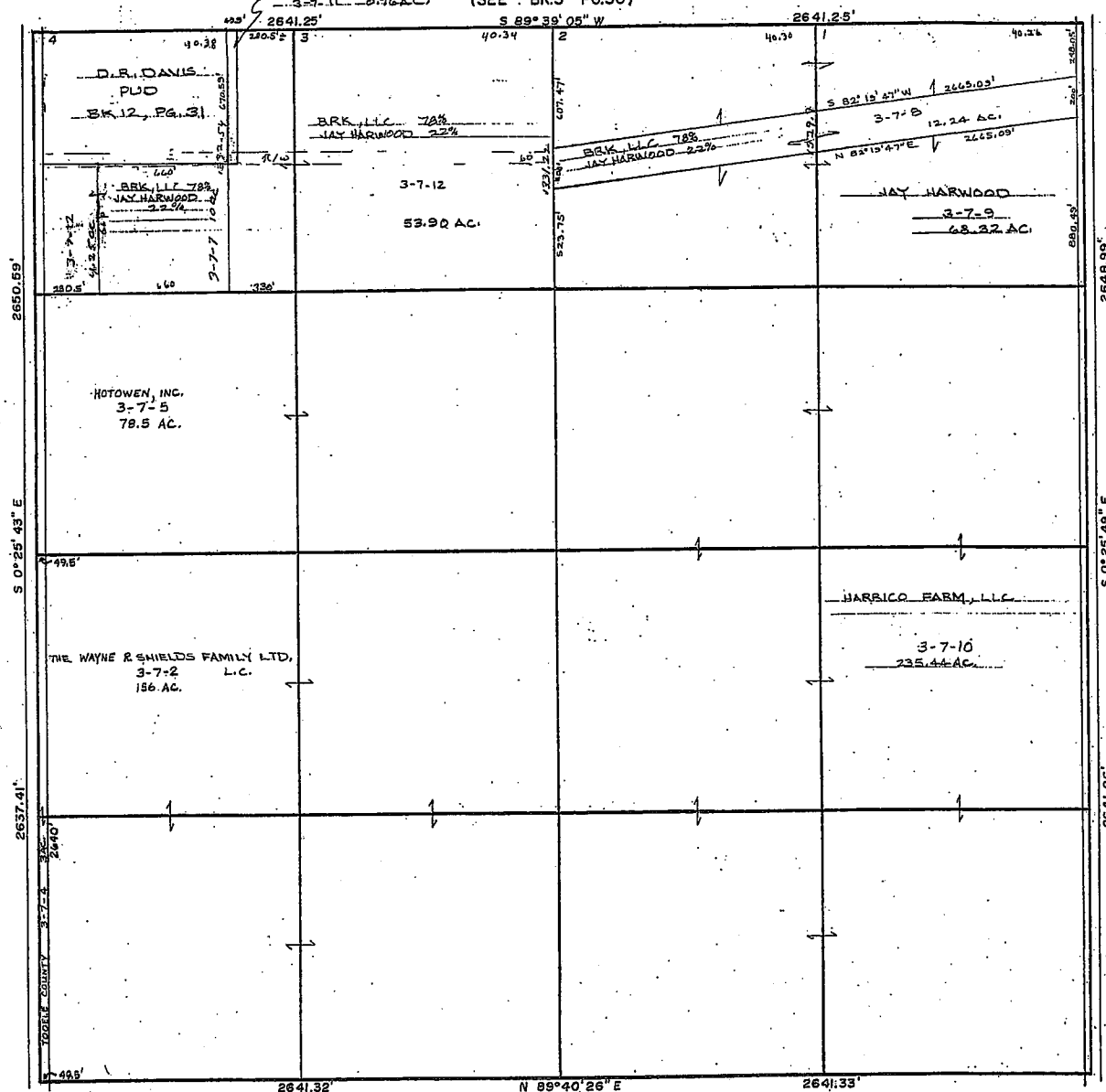
APPROVED AS TO FORM:

  
DOUGLAS J. AHLSTROM  
Tooele County Attorney

THIS PLAT IS MADE SOLELY FOR THE PURPOSE OF ASSISTING IN LOCATING THE LAND, AND THE RECORDER ASSUMES NO LIABILITY FOR VARIATIONS, IF ANY, WITH AN ACTUAL SURVEY.

SECTION 3 T 3 S R 4 W S.L.B.&M.

DAVID R. DAVIS  
3-7-11-076AC (SEE BK.5 PG.50)



REVISIONS INITIAL AND DATE					NOTES	U.S.T.C. approval Date:	PLAT DEPARTMENT  TOOELE COUNTY, UTAH	book	page
MAY 6 6 2000 DD								3	7
3-7-11 3-7-12								drawn by: RS	date: 7/9/20