

**TOOELE COUNTY
ORDINANCE 2020-19**

**AN ORDINANCE VACATING THE PUBLIC RIGHT-OF-WAY
INTEREST IN SELECTED ROADS LOCATED ON BERTAGNOLE
PROPERTY, SOUTH OF TOOELE ARMY DEPOT AND WEST OF
HIGHWAY 36**

**NOW, THEREFORE, BE IT ORDAINED BY THE LEGISLATIVE BODY OF
TOOELE COUNTY, UTAH AS FOLLOWS:**

SECTION I – PURPOSE. Pursuant to the “Superseding Settlement Agreement” between the County, Bertagnoles, and Kilgore, the County has agreed to vacate certain roads on the Bertagnoles’ properties. The Tooele County Planning Commission held a public hearing on the issue and made a favorable recommendation to vacate the roads.

SECTION II – ROADS VACATED. Having provided proper notice pursuant to Utah Code Annotated 72-3-108, a public hearing was conducted and finding good cause therefore, Tooele County hereby vacates the public right-of-way interest in the roadways known as tc03386, tc03390, tc03391, tc03392, North Tooth Rd, and a portion of S Mountain Star Rd. The roadways and roadway portion being vacated are located on Parcels # 06-016-0-0001, 06-016-0-0002, 06-016-0-0003, 06-016-0-0004, 06-016-0-0008, 06-016-0-0009, 06-017-A-0018, and 06-017-D-0008 in Tooele County, Utah.

Maps showing the area and roads being vacated are attached hereto and by this reference made a part hereof.

The County’s interest in the vacated roads will revert to the adjoining landowners.

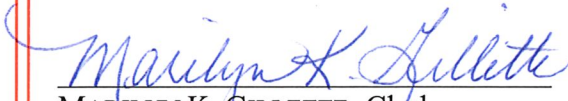
The Tooele County Clerk is hereby directed to cause this ordinance to be recorded in the office of the County Recorder/Surveyor.

SECTION III – REPEALER. Ordinances and resolutions in conflict herewith are hereby repealed to the extent of such conflict.

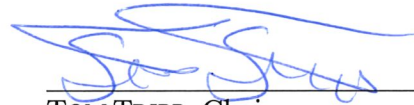
SECTION IV – EFFECTIVE DATE. This ordinance shall become effective fifteen (15) days after its passage, provided it has been published, or at such publication date if more than fifteen (15) days after passage.

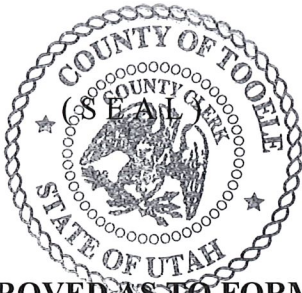
IN WITNESS WHEREOF the Tooele County Commission, which is the legislative body of Tooele County, passed, approved and enacted this ordinance this 7th day of July 2020.

ATTEST:



Marilyn K. Gillette, Clerk

TOOELE COUNTY COMMISSION:


Tom Tripp, Chairman

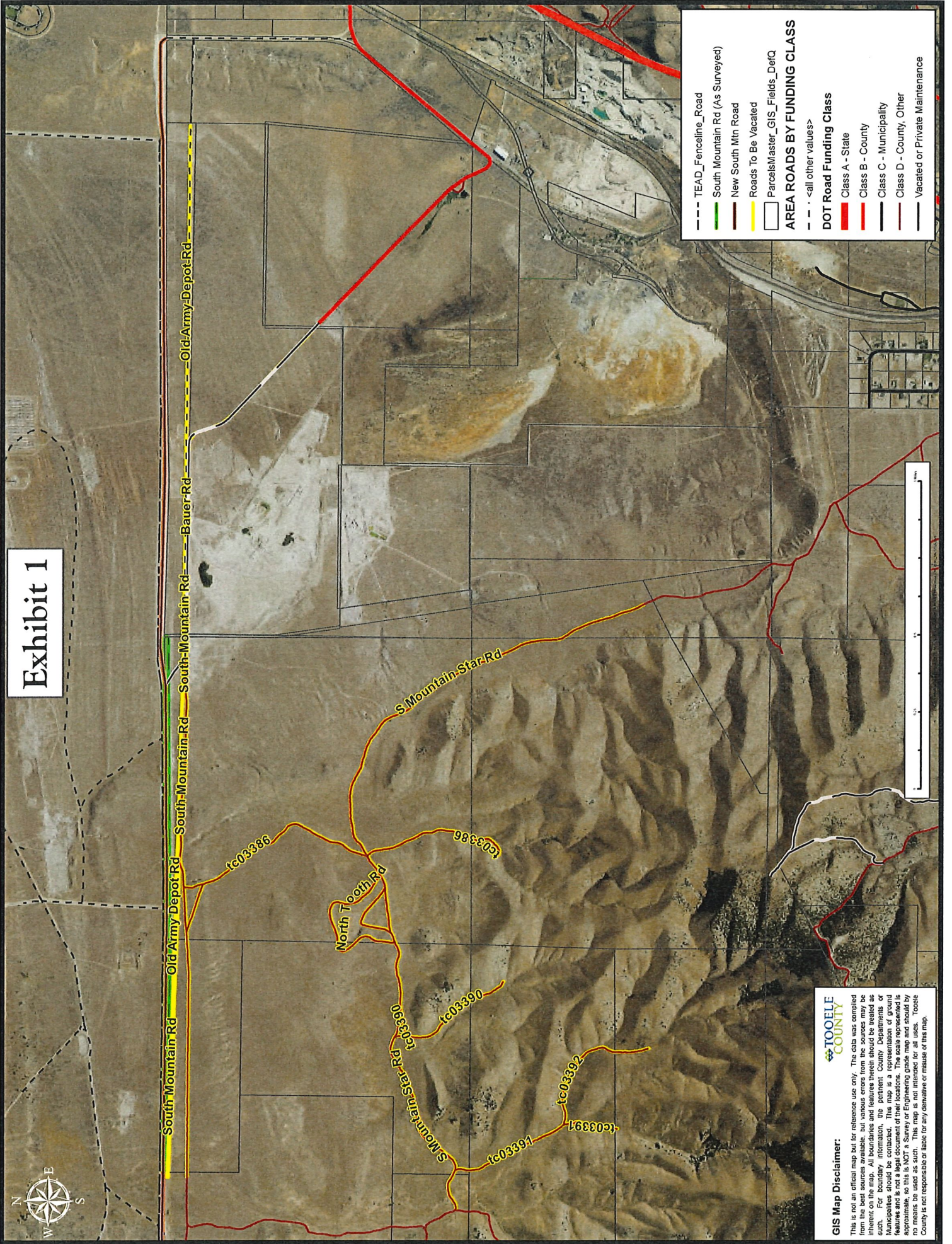


APPROVED AS TO FORM:


Scott A. Broadhead
Tooele County Attorney

Commissioner Milne voted nay
Commissioner Thomas voted aye
Commissioner Tripp voted aye

Exhibit 1

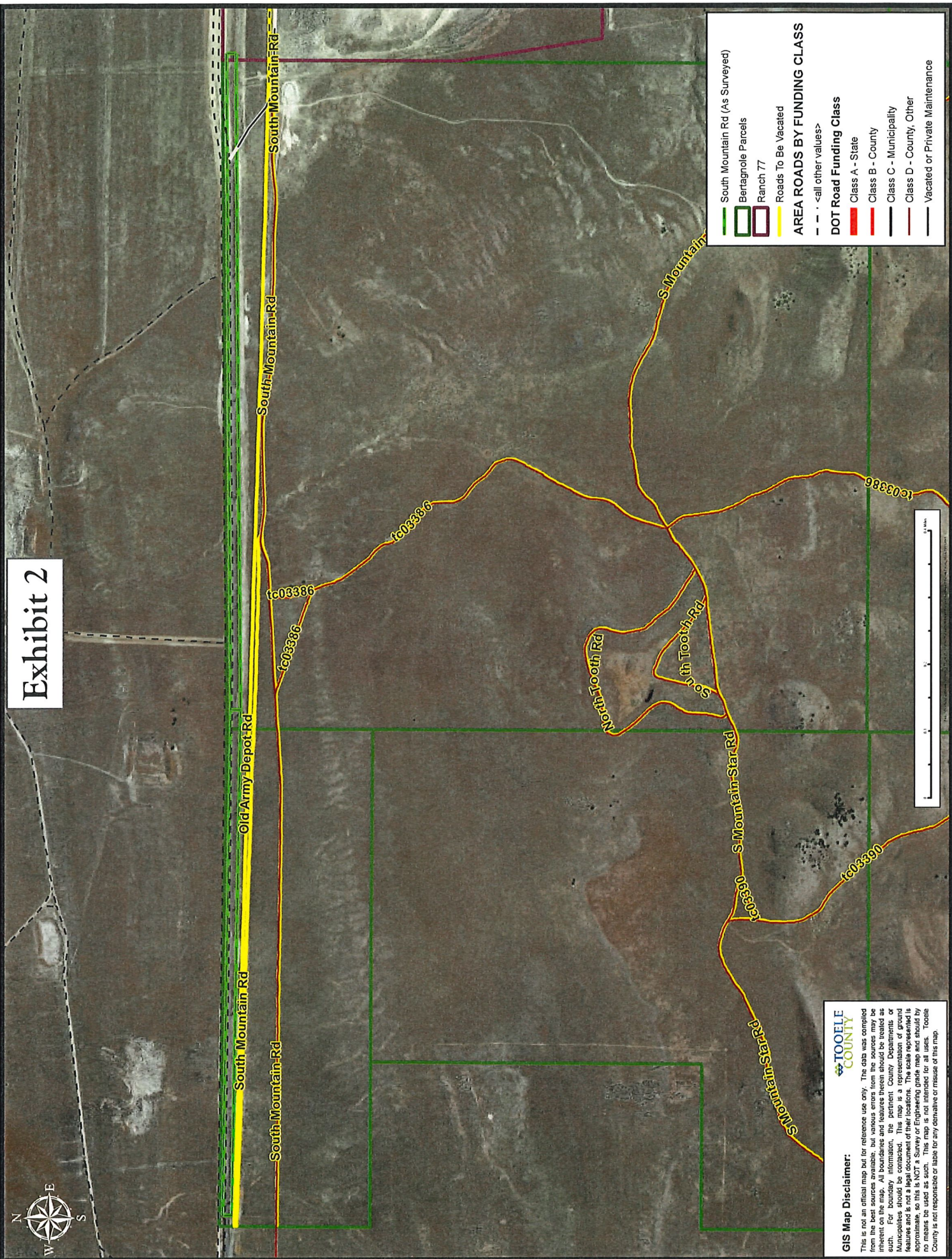


TOOELE COUNTY

GIS Map Disclaimer:

This is not an official map but for reference use only. The data was compiled from the best sources available, but various errors from the sources may be inherent on the map. All boundaries and features therein should be treated as such. For boundary information, the pertinent County Departments or Municipalities should be contacted. This map is a representation of ground conditions and is not a Survey or Engineering work. The map should be used as a guide only and is not intended for all uses. Tooele County is not responsible or liable for any derivative or misuse of this map.

Exhibit 2



— South Mountain Rd (As Surveyed)
 Bertagnole Parcels
 Ranch 77
 Roads To Be Vacated
 - - - <all other values>

AREA ROADS BY FUNDING CLASS

— DOT Road Funding Class
— Class A - State
— Class B - County
— Class C - Municipality
— Class D - County, Other
— Vacated or Private Maintenance

GIS Map Disclaimer:

This is not an official map but for reference use only. The data was compiled from the best sources available, but various errors from the sources may be inherent on the map. All boundaries and features therein should be treated as such. For boundary information, the pertinent County Departments or Municipalities should be contacted. This map is a representation of ground features and is not a statement of title. The scale represented is approximate and should not be used for legal purposes. Tooele County is not responsible or liable for any derivative or misuse of this map.

