

ORDINANCE 2018-15

AN ORDINANCE AMENDING THE OFFICIAL ZONING MAP OF TOOELE COUNTY; REZONING APPROXIMATELY 1,444 ACRES OF LAND, LOCATED IN STANSBURY PARK AND LAKE POINT, FROM A-20, M-D, MU-40, AND RR-1 TO P-C

NOW, THEREFORE, BE IT ORDAINED BY THE LEGISLATIVE BODY OF TOOELE COUNTY, UTAH AS FOLLOWS:

SECTION I – AMENDMENT. Pursuant to Utah Code Annotated Sections 17-27a-502 and 17-27a-503, the Tooele County Planning Commission conducted a public hearing on the application for rezone submitted by Jeff Stephenson on behalf of Kennecott Utah Copper and made a favorable recommendation to amend the official zoning map.

Notice having been provided as required by UCA Subsection 17-27a-205(1)(b) and having held a public meeting, the official zoning map of Tooele County is hereby amended by changing the zoning designation of approximately 1,444 acres, known as Parcels 05-026-0-0010, 05-026-0-0011, 05-027-0-0021, 05-021-0-0017, 05-021-0-0002, 05-028-0-0033, 05-028-0-0056, 05-027-0-0009, 05-028-0-0037, and 05-033-0-0034, located in Stansbury Park and Lake Point in Tooele County, Utah from A-20 (Agriculture, 20-Acre Minimum Lot Size), M-D (Manufacturing Distribution), MU-40 (Multiple-Use, 40-Acre Minimum Lot Size), and RR-1 (Rural Residential, One-Acre Minimum Lot Size) to P-C (Planned Community).

Maps showing the area of the rezone are attached hereto and by this reference made a part hereof.

SECTION II – REPEALER. Ordinances and resolutions in conflict herewith are hereby repealed to the extent of such conflict.

Ord. 2018-15

SECTION III – EFFECTIVE DATE. This ordinance shall become effective fifteen (15) days after its passage, provided it has been published, or at such publication date if more than fifteen (15) days after passage.

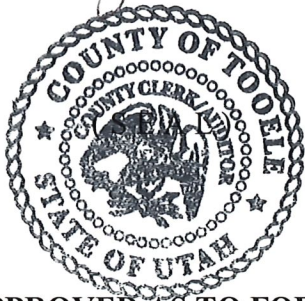
IN WITNESS WHEREOF the Tooele County Commission, which is the legislative body of Tooele County, passed, approved, and enacted this ordinance this 30th day of October 2018.

ATTEST:



Marilyn K. Gillette, Clerk/Auditor

TOOELE COUNTY COMMISSION:


WADE B. BITNER, Chairman

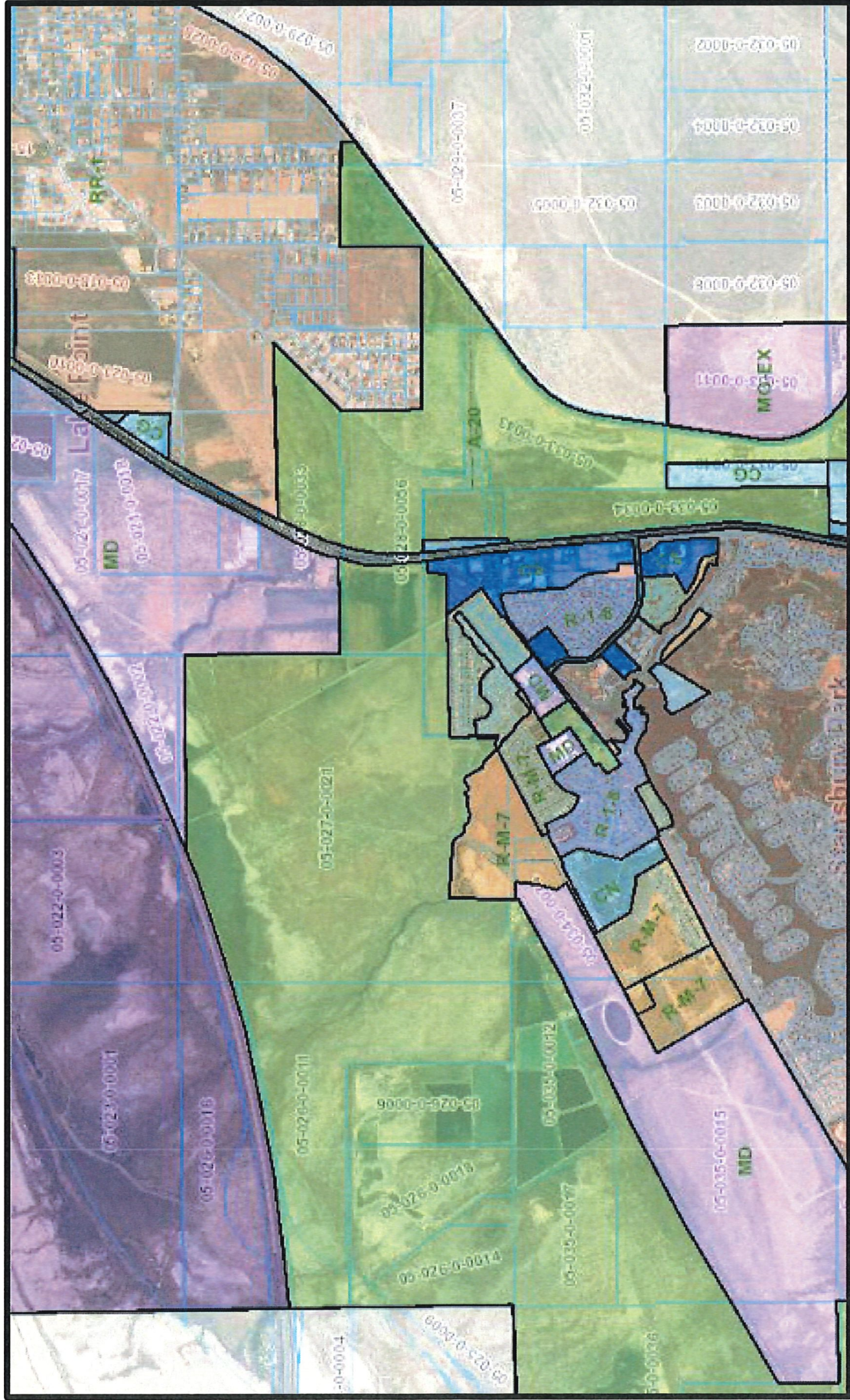


APPROVED AS TO FORM:


SCOTT A. BROADHEAD
Tooele County Attorney

Commissioner Bateman voted aye
Commissioner Bitner voted aye
Commissioner Milne voted no

REZ 2018-04: Rezone from A-20, M-D, MU-40, and RR-1 to P-C (Planned Community)



REZ 2018-04: Rezone from A-20, M-D, MU-40, and RR-1 to P-C (Planned Community)

