

ORDINANCE 2015-20

AN ORDINANCE AMENDING THE OFFICIAL ZONING MAP OF TOOELE COUNTY; REZONING APPROXIMATELY 114.67 ACRES OF LAND, EAST OF STANSBURY PARK, FROM MU-40 TO MG-EX

NOW, THEREFORE, BE IT ORDAINED BY THE LEGISLATIVE BODY OF TOOELE COUNTY, UTAH AS FOLLOWS:

SECTION I – AMENDMENT. Pursuant to Utah Code Annotated Sections 17-27a-502 and 17-27a-503, the Tooele County Planning Commission conducted a public hearing on the application for rezone submitted by Joe White, on behalf of Ironwood Real Estate, and Jay Harwood, on behalf of Erda Shop, LLC, and recommended the amendment to the official zoning map.

Notice having been provided as required by UCA Subsection 17-27a-205(1)(b) and having held a public meeting, the official zoning map of Tooele County is hereby amended by changing the zoning designation of approximately 114.67 acres consisting of Parcels 05-033-0-0041 and 05-038-0-0010 which are located at approximately 6000 N. Droubay Road, east of Stansbury Park in Tooele County, Utah from MU-40 (Multiple-Use, 40-Acre Minimum Lot Size) to MG-EX (Mining, Quarry, Sand and Gravel Excavation).

Maps showing the area of the rezone are attached hereto and by this reference made a part hereof.

SECTION II - REPEALER. Ordinances and resolutions in conflict herewith are hereby repealed to the extent of such conflict.

SECTION III - EFFECTIVE DATE. This ordinance shall become effective fifteen (15) days after its passage, provided it has been published, or at such publication date if more than fifteen (15) days after passage.

Ord. 2015-20

IN WITNESS WHEREOF the Tooele County Commission, which is the legislative body of Tooele County, passed, approved and enacted this ordinance this 17th day of November 2015.

ATTEST:


Marilyn K. Gillette, Clerk/Auditor


TOOELE COUNTY COMMISSION:

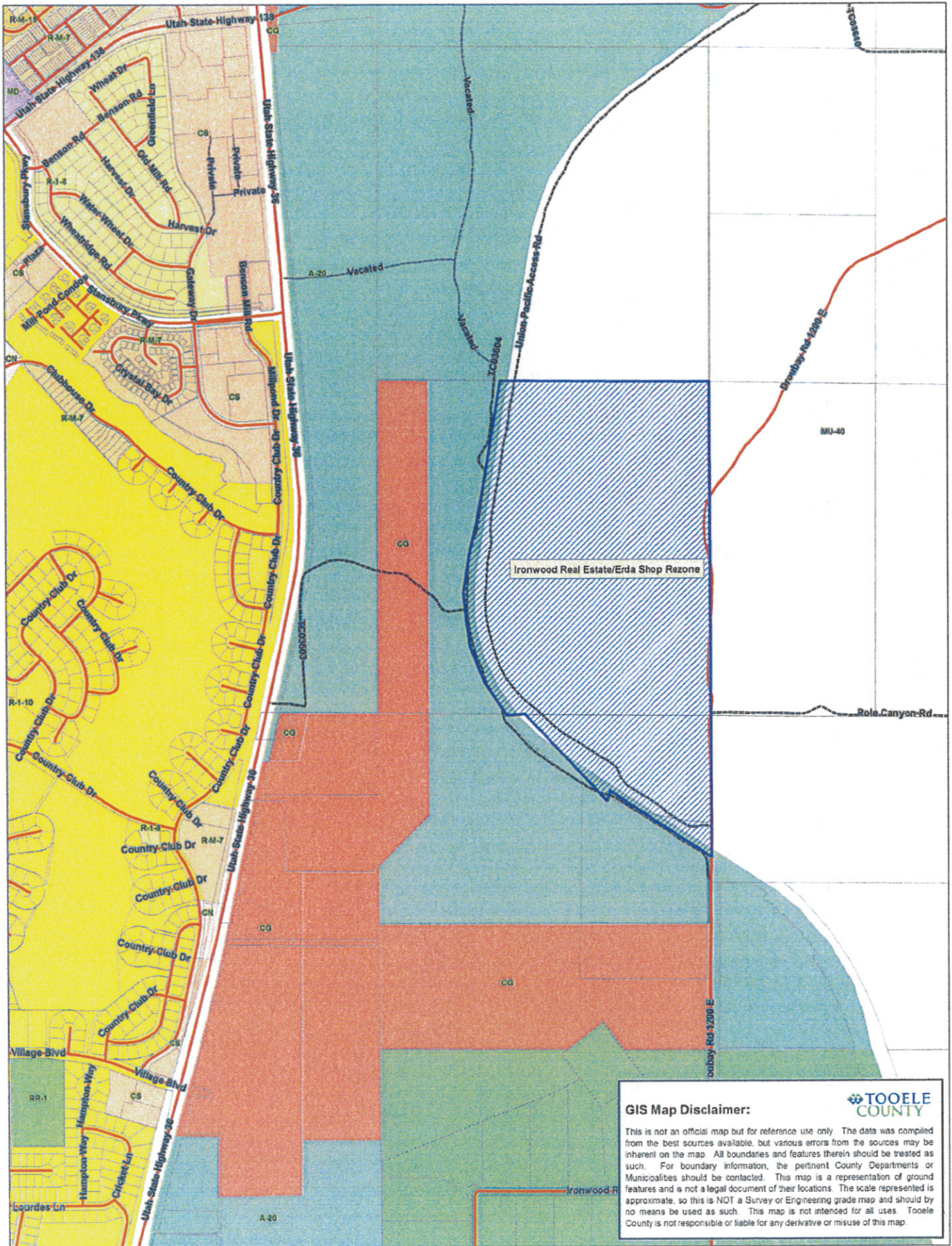

WADE B. BITNER, Chairman



Commissioner Bateman voted aye
Commissioner Bitner voted aye
Commissioner Milne voted aye

APPROVED AS TO FORM:

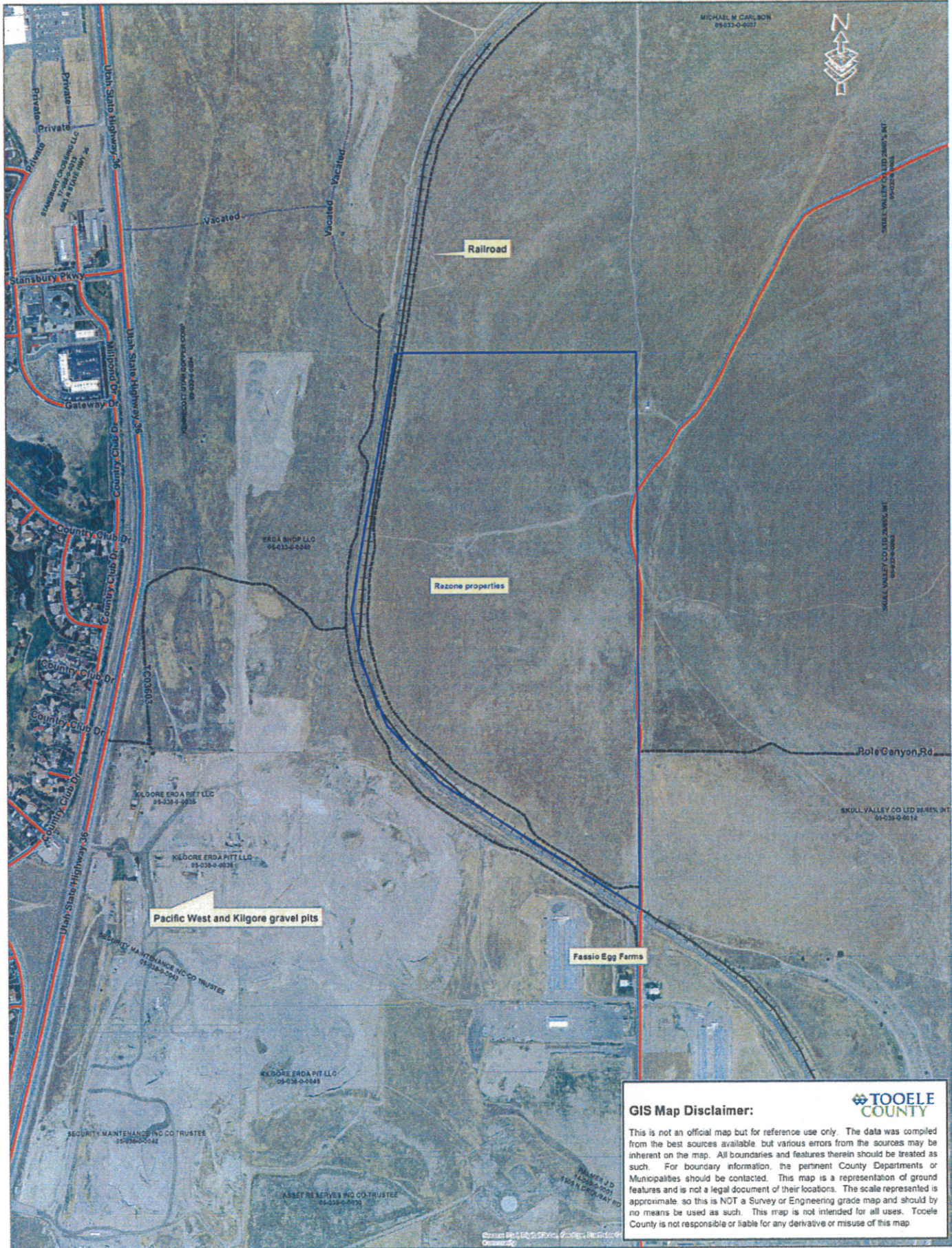

SCOTT A. BROADHEAD
Tooele County Attorney



GIS Map Disclaimer:

TOOELE COUNTY

This is not an official map but for reference use only. The data was compiled from the best sources available, but various errors from the sources may be inherent on the map. All boundaries and features therein should be treated as such. For boundary information, the pertinent County Departments or Municipalities should be contacted. This map is a representation of ground features and is not a legal document of their locations. The scale represented is approximate, so this is NOT a Survey or Engineering grade map and should by no means be used as such. This map is not intended for all uses. Tooele County is not responsible or liable for any derivative or misuse of this map.



MICHAEL M. CARLSON
95433-0-4017



Railroad

Rezone properties

Pacific West and Kilgore gravel pits

Fassio Egg Farms

GIS Map Disclaimer:



This is not an official map but for reference use only. The data was compiled from the best sources available, but various errors from the sources may be inherent on the map. All boundaries and features therein should be treated as such. For boundary information, the pertinent County Departments or Municipalities should be contacted. This map is a representation of ground features and is not a legal document of their locations. The scale represented is approximate, so this is NOT a Survey or Engineering grade map and should by no means be used as such. This map is not intended for all uses. Tooele County is not responsible or liable for any derivative or misuse of this map.

Source: GIS Data, Office of Geographic Information Systems, Tooele County