

**ORDINANCE 2015-15**

**AN ORDINANCE AMENDING THE OFFICIAL ZONING MAP OF TOOELE COUNTY; REZONING APPROXIMATELY 28.53 ACRES OF LAND IN ERDA, ADJACENT TO THE AIRPORT, FROM A-20 TO RR-5**

**NOW, THEREFORE, BE IT ORDAINED BY THE LEGISLATIVE BODY OF TOOELE COUNTY, UTAH AS FOLLOWS:**

**SECTION I – AMENDMENT.** An application for rezone was submitted by agent Lenore Lund on behalf of Sylvia C. Enniss. Pursuant to Utah Code Annotated Sections 17-27a-502 and 17-27a-503, the Tooele County Planning Commission conducted a public hearing on the proposed rezone and recommended the amendment to the official zoning map.

Notice having been provided as required by UCA Subsection 17-27a-205(1)(b) and having held a public meeting, the official zoning map of Tooele County is hereby amended by changing the zoning designation of approximately 28.53 acres located in Section 31, Township 2 South, Range 4 West at 1750 W. Erda Way, which is east of and adjacent to the Tooele Valley Airport in Tooele County, Utah from A-20 (Agriculture, 20-Acre Minimum Lot Size) to RR-5 (Rural Residential, Five-Acre Minimum Lot Size). The legal description of the rezoned property is as follows:

Beginning 875 feet East and 33 feet North of the W 1/4 Corner of SEC 31, T2S, R4W, SLB&M, on the North line of the county road, and running thence North 2613.6 feet to the North line of SEC 31, E 445 feet, South 1320 feet, East 660 feet, South 924 feet, West 231 feet, South 363 feet to the North line of the county road, West 874 feet to the point of beginning, less 6.92 acres to Salt Lake City Corporation 5-37-51 (280739, less 5.00 acres to Salt Lake City Corporation 5-47-53 (309952), less 5.0 acres to Salt Lake City Corporation 5-47-55 (328369). Contains 28.53 AC

A map showing the area of the rezone is attached hereto and by this reference made a part hereof.

**SECTION II - REPEALER.** Ordinances and resolutions in conflict herewith are hereby repealed to the extent of such conflict.

**SECTION III - EFFECTIVE DATE.** This ordinance shall become effective fifteen (15) days after its passage, provided it has been published, or at such publication date if more than fifteen (15) days after passage.

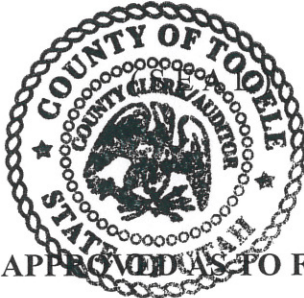
**IN WITNESS WHEREOF** the Tooele County Commission, which is the legislative body of Tooele County, passed, approved and enacted this ordinance this 7<sup>th</sup> day of July 2015.

**ATTEST:**

**TOOELE COUNTY COMMISSION:**


  
MARILYN K. GILLETTE, Clerk/Auditor

  
WADE B. BITNER, Chairman

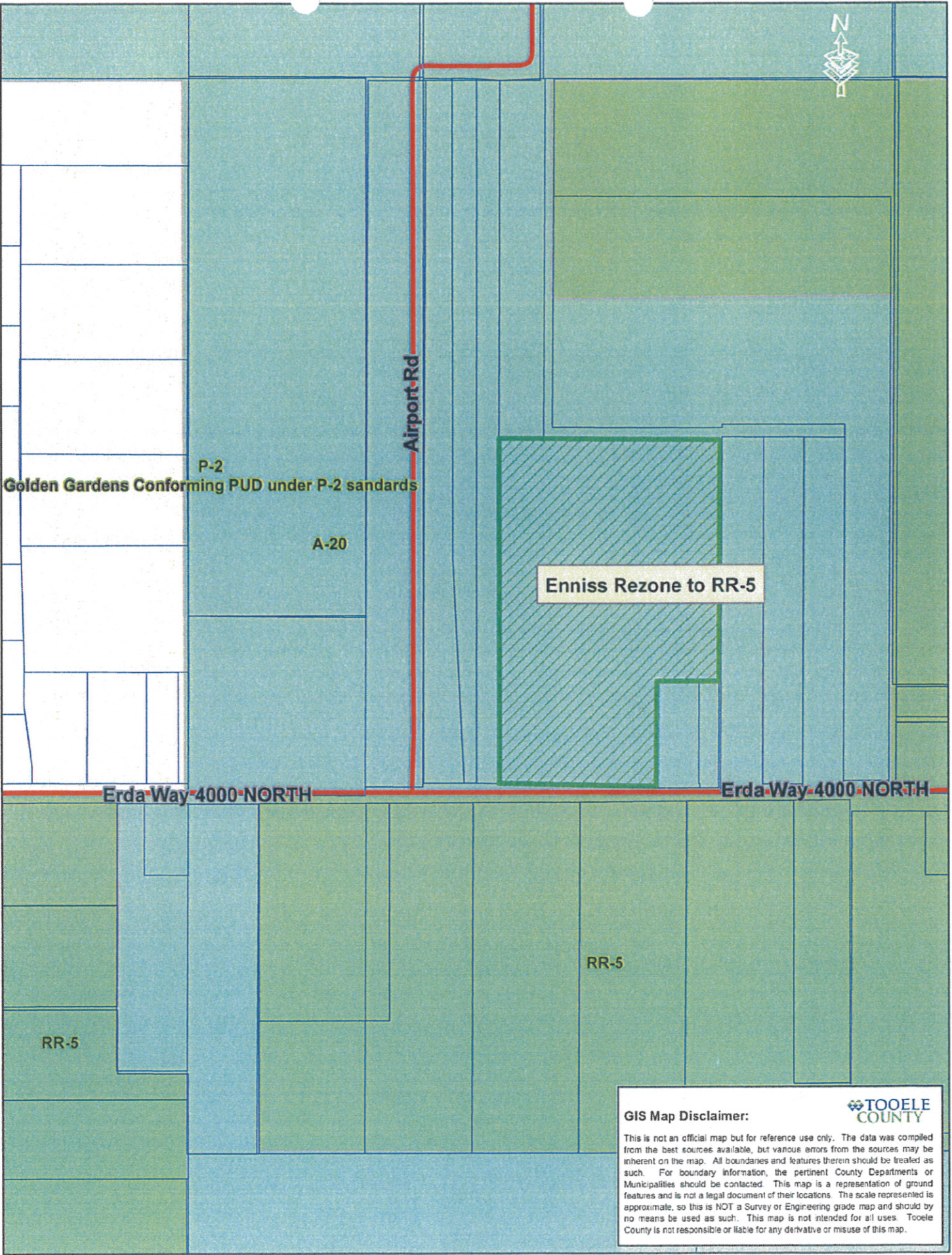


Commissioner Bateman voted aye  
Commissioner Bitner voted aye  
Commissioner Milne voted aye

**APPROVED AS TO FORM:**

  
SCOTT A. BROADHEAD  
Tooele County Attorney





P-2  
Golden Gardens Conforming PUD under P-2 standards

A-20

Enniss Rezone to RR-5


Erda Way 4000 NORTH

Erda Way 4000 NORTH

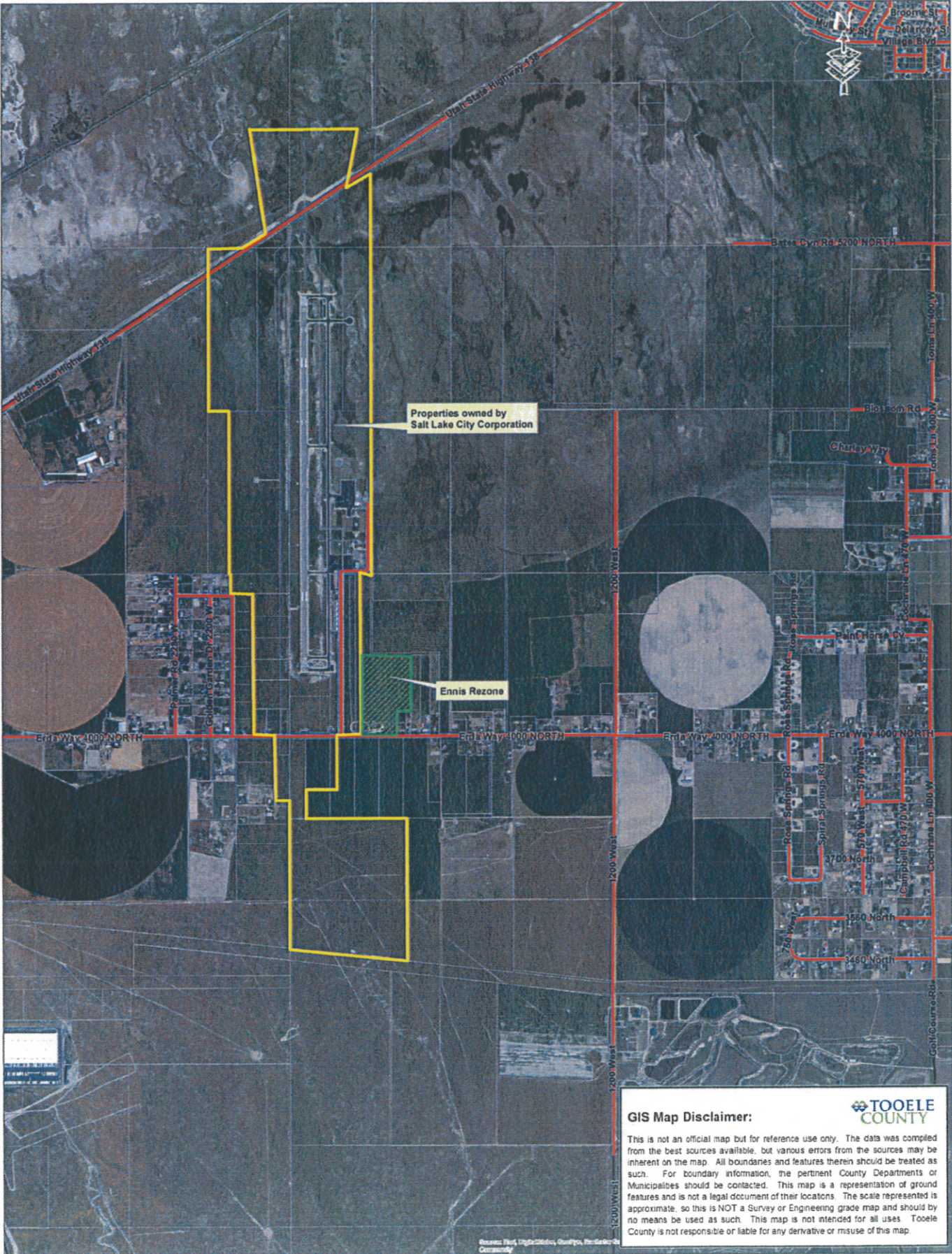
Airport Rd

RR-5

RR-5

**GIS Map Disclaimer:**   
This is not an official map but for reference use only. The data was compiled from the best sources available, but various errors from the sources may be inherent on the map. All boundaries and features therein should be treated as such. For boundary information, the pertinent County Departments or Municipalities should be contacted. This map is a representation of ground features and is not a legal document of their locations. The scale represented is approximate, so this is NOT a Survey or Engineering grade map and should by no means be used as such. This map is not intended for all uses. Tooele County is not responsible or liable for any derivative or misuse of this map.





Properties owned by Salt Lake City Corporation

Ennis Rezone

**GIS Map Disclaimer:**



This is not an official map but for reference use only. The data was compiled from the best sources available, but various errors from the sources may be inherent on the map. All boundaries and features therein should be treated as such. For boundary information, the pertinent County Departments or Municipalities should be contacted. This map is a representation of ground features and is not a legal document of their locations. The scale represented is approximate, so this is NOT a Survey or Engineering grade map and should by no means be used as such. This map is not intended for all uses. Tooele County is not responsible or liable for any derivative or misuse of this map.

Source: First Light, 2010; Google, 2010; Tooele County