

ORDINANCE 2012-17

**AN ORDINANCE VACATING THE PUBLIC RIGHT-OF-WAY INTEREST
IN SELECTED ROADWAYS AND SECTIONS OF ROADWAYS LOCATED
IN THE NORTHWEST PORTION OF GRANTSVILLE CITY**

**NOW, THEREFORE, BE IT ORDAINED BY THE LEGISLATIVE BODY OF
TOOELE COUNTY, UTAH AS FOLLOWS:**

SECTION I - PURPOSE. Geneva Rock Products, Inc. began pursuing development of a limestone quarry in this area several years ago, before the area was annexed into Grantsville City. Part of the quarry development process has been securing and developing an acceptable transportation route for the gravel trucks from SR-138 to Geneva Rock Products' property. The current access is through the non-dedicated roads of Little Mountain Road and TC03262 which traverse property owned by Lone Star, SITLA (State of Utah School & Institutional Trust Lands Administration), and Jay Anderson. Part of the agreement to develop the limestone quarry is to provide a safer dedicated access road. The access road (Little Mountain Road) has been slightly realigned to improve visibility and motorist safety at the intersection of SR-138 and across the SITLA and Anderson properties. Part of the agreement Geneva has with SITLA to obtain a dedicated public road is for Geneva to request that the County vacate nonessential prescriptive use roads that pass through the SITLA-owned property. Even though these prescriptive use roads are now within Grantsville City, property owners, particularly SITLA, desire that the County formally vacate these roads.

The Tooele County Planning Commission held a public hearing on the issue and, with a unanimous vote, recommends passage of this ordinance.

SECTION II - ROADS VACATED. Having provided proper notice pursuant to Utah Code Annotated 72-3-108, a public hearing was conducted and finding good cause therefore, Tooele County hereby vacates the public right-of-way interest in a portion of Little Mountain Road,

Ord. 2012-17

TC03262, and a few minor off-shoots on SITLA property. These roadways are located in Sections 16 and 17, Township 2 South, Range 6 West.

A map showing the area of the roads being vacated (Exhibit A) is attached hereto and by this reference made a part hereof.

The Tooele County Clerk is hereby directed to cause this ordinance to be recorded in the office of the County Recorder.

SECTION III - REPEALER. Ordinances in conflict herewith are hereby repealed to the extent of such conflict.

SECTION IV - EFFECTIVE DATE. This ordinance shall take effect fifteen (15) days after its passage, provided the same has been published, with the name of the members voting for and against the same, for at least one publication in one issue of a newspaper published in and having general circulation in Tooele County.

IN WITNESS WHEREOF the Tooele County Commission, which is the legislative body of Tooele County, passed, approved and enacted this ordinance this 18th day of September 2012.

ATTEST:

TOOELE COUNTY COMMISSION:


Marilyn K. Gillette, Clerk


Colleen S. Johnson, Chairman

(S E A L)

Commissioner Johnson voted aye
Commissioner Clegg voted aye
Commissioner Hurst voted aye

APPROVED AS TO FORM:


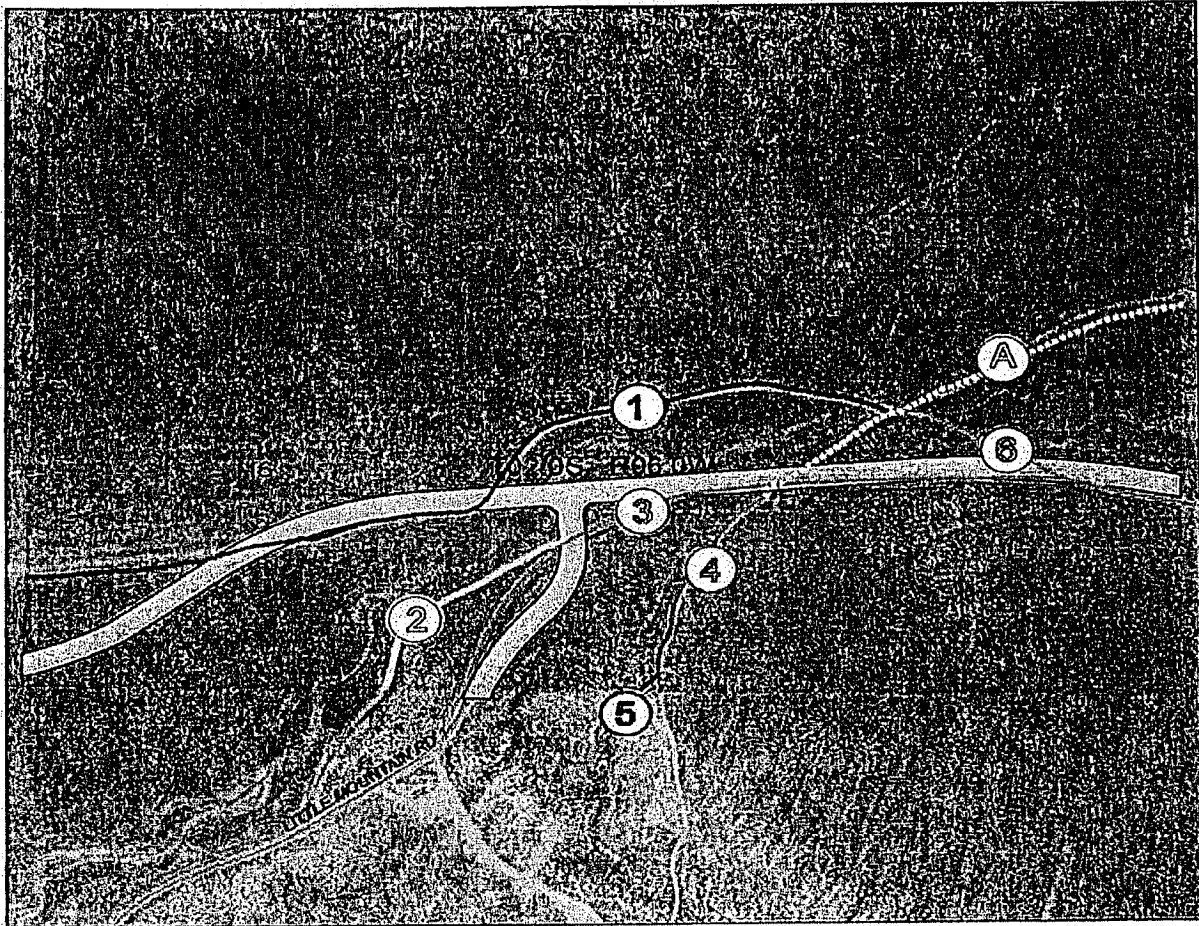

DOUG HOGAN
Tooele County Attorney

EXHIBIT A

DEPICTION OF THE PORTION OF VACATED ROADS ON THE SITLA PROPERTY



"Vacated Roads"

- ① Spur 1
- ② Spur 2
- ③ Spur 3
- ④ Spur 4
- ⑤ Spur 5
- ⑥ Spur 6
- A Spur A (Leave Open)

- Little Mountain Road Realignment
- State Trust Lands
- Private

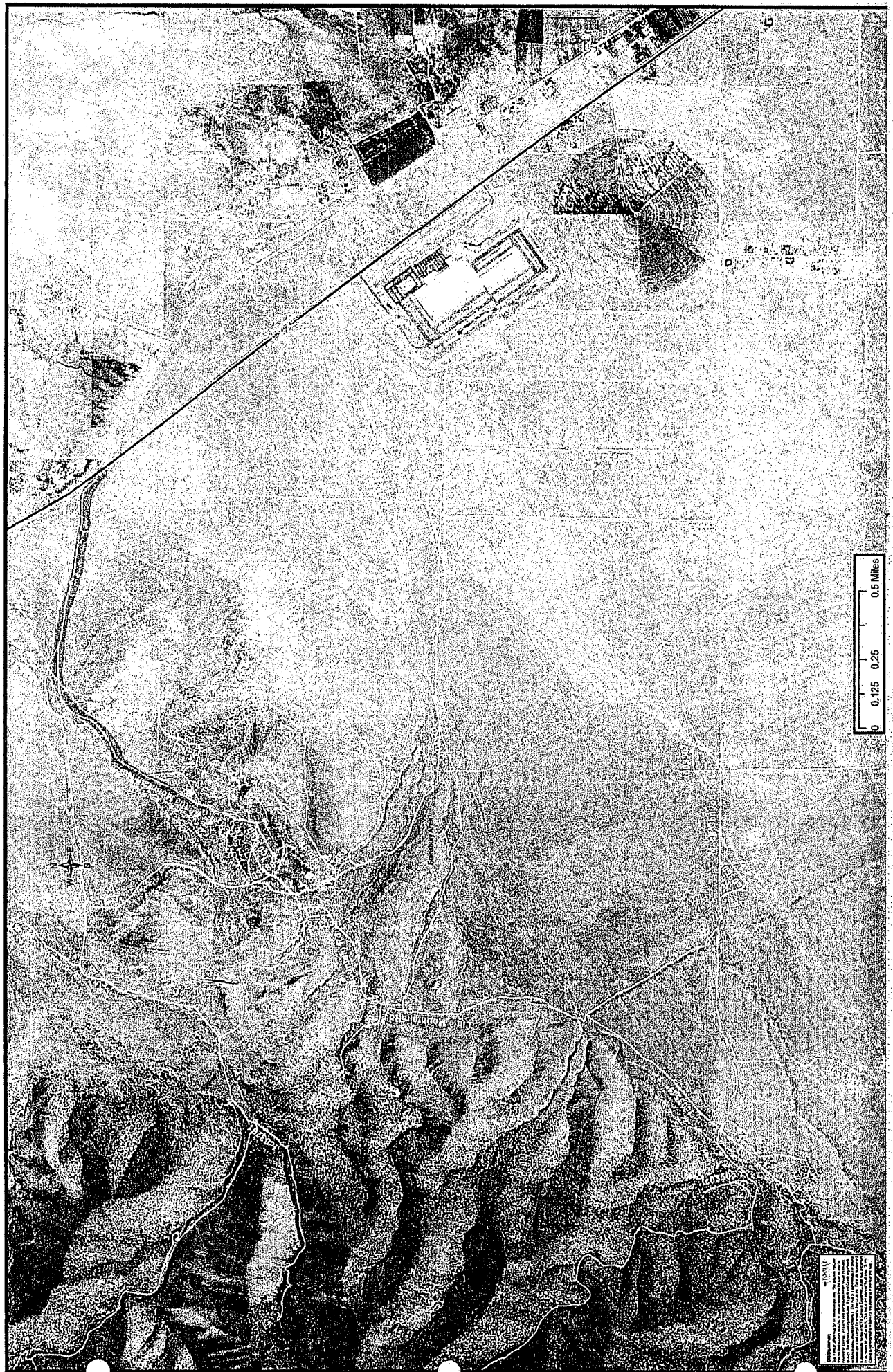
Township 2 South, Range 6 West
SLB&M, Section 16
Tooele County

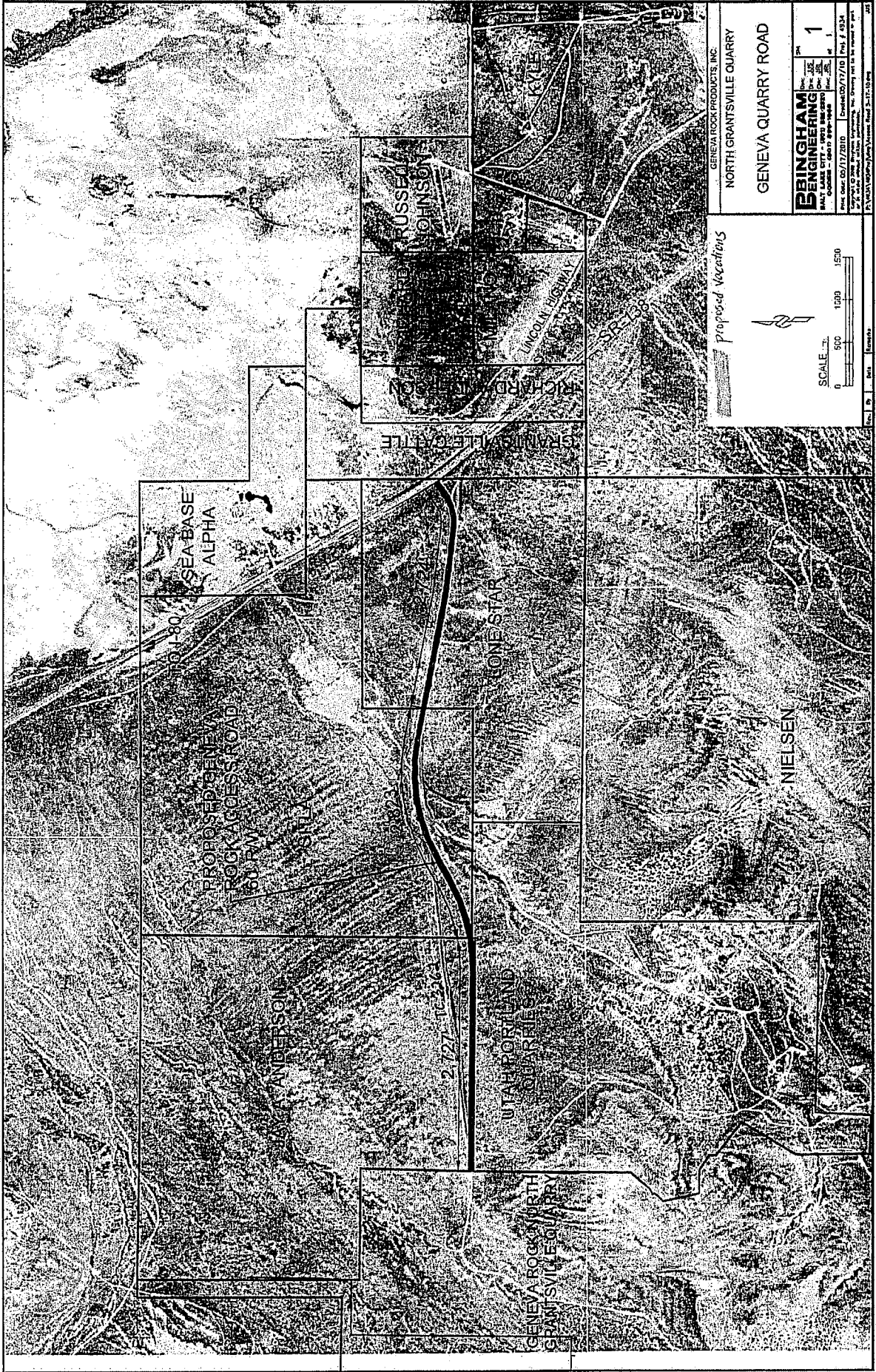


1 inch = 349 feet



The GPS data represented on this map was collected by Rebecca Steed, GIS Analyst II, SITLA, January 21st, 2011, and is not surveyed data. Data represented on this map is for REFERENCE USE ONLY and is NOT to be used in place of a legal land survey! The Utah School and Institutional Trust Lands Administration (SITLA) IT/GIS Department assumes no responsibility for errors or omissions in these materials. Land parcels, lease boundaries and associated SITLA data layers may have been adjusted to align with other digital features (i.e. PLSS lines, digital imagery, roads) or other tie points in order to allow for visual "best fit". While SITLA seeks to verify data for accuracy and content, discrepancies may exist within the data. SITLA hereby disclaims any and all liability due to the use or misuse of this map and the data represented on this map. The user assumes total responsibility for verification and use. 2/14/2011





GENEVA ROCK PRODUCTS, INC.
 NORTH GRANTSVILLE QUARRY
 GENEVA QUARRY ROAD

Proposed Vacations

SCALE: 1" = 500'

0 500 1000 1500

BINGHAM ENGINEERING
 1000 S. 1000 E. SUITE 100
 WALKER, UTAH 84601
 (801) 734-1111
 FAX (801) 734-1112

DATE: 05/17/2010
 PROJECT: 05/17/10
 SHEET: 1 OF 1

BY: [Signature]
 CHECKED: [Signature]
 DRAWN: [Signature]

PLANNING & ENGINEERING