

ORDINANCE 2010-05

AN ORDINANCE AMENDING THE OFFICIAL ZONING MAP OF TOOELE COUNTY; REZONING APPROXIMATELY 0.39 ACRE OF PROPERTY IN STANSBURY PARK FROM R-1-10 TO R-1-8

NOW, THEREFORE, BE IT ORDAINED BY THE LEGISLATIVE BODY OF TOOELE COUNTY, UTAH AS FOLLOWS:

SECTION I - AMENDMENT. Pursuant to Utah Code Sections 17-27a-502 and 503, the Tooele County Planning Commission conducted a public hearing on the application for rezone submitted by Kelly Wood and recommended the amendment to the official zoning map.

Notice having been provided as required by Subsection 17-27a-205(1)(b) and having held a public meeting, the official zoning map of Tooele County is hereby amended by changing the zoning designation of approximately 0.39 acre (17,199 sq. ft.) known as Parcel # 14-074-0-0001 from R-1-10 (Residential, Single Family, 10,000 Square-Foot Minimum Lot Size) to R-1-8 (Residential, Single Family, 8,000 Square-Foot Minimum Lot Size). This parcel is the sole lot of Country Club Subdivision No. 2, Amendment No. 1 and is located at 192 Country Club in Stansbury Park.

A map showing the area of the rezone is attached hereto and by this reference made a part hereof.

SECTION II - REPEALER. Ordinances and resolutions in conflict herewith are hereby repealed to the extent of such conflict.

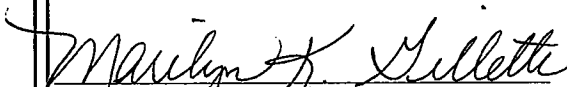
SECTION III - EFFECTIVE DATE. This ordinance shall become effective 15 days after its passage provided it has been published, or at such publication date if more than 15 days after passage.

Ord. 2010-05


IN WITNESS WHEREOF the Tooele County Commission, which is the legislative body of Tooele County, passed, approved and enacted this ordinance this 2nd day of March 2010.

ATTEST:

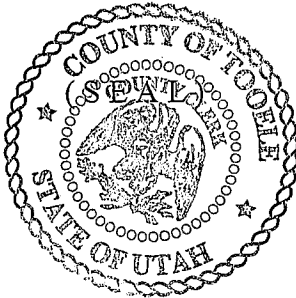
TOOELE COUNTY COMMISSION:



MARILYN K. GILLETTE, Clerk




COLLEEN S. JOHNSON, Chairman



Commissioner Johnson voted aye
Commissioner Clegg voted aye
Commissioner Hurst voted aye

APPROVED AS TO FORM:



DOUG HOGAN
Tooele County Attorney

5

LOT NO. 1 COUNTRY CLUB SUBDIVISION NO. 2 AMENDMENT NO. 1 FINAL PLAT

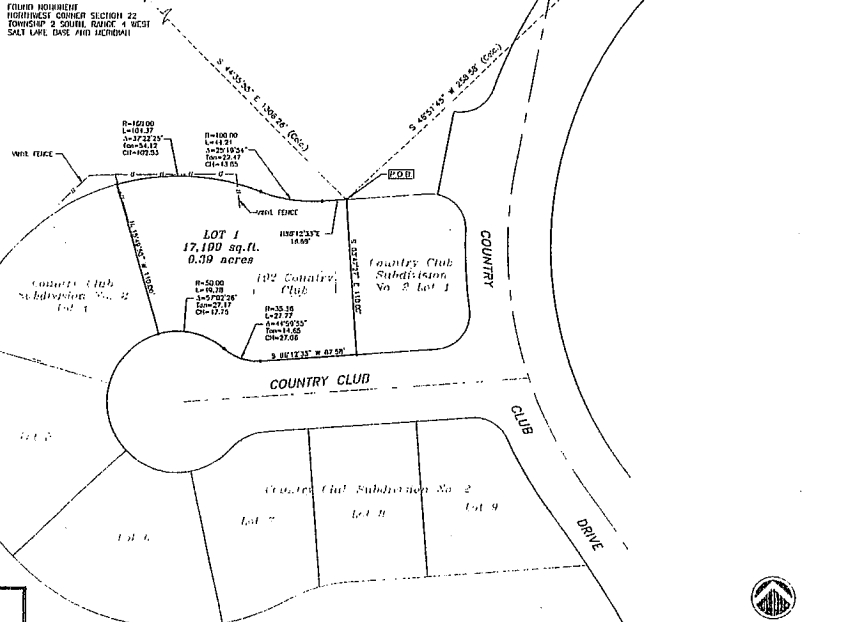
STANSBURY PARK, UTAH

The purpose of this survey is to vacate and re-subdivide Lots 2 and 3 of Country Club Subdivision No. 2 on file with the Tooele County Recorder's Office, (as Entry # 298834) in Book 93 of Pages 589-590

FOUNDED MONUMENT
NORTHEAST CORNER SECTION 22
DOMESTIC 2 SQUARE BLOCK 4 WEST
SALT LAKE BASE AND MERIDIAN

FOUNDED STREET MONUMENT
SOUTH GREEN CIRCLE AND COUNTRY CLUB DRIVE
COUNTRY CLUB SUBDIVISION NO. 2
BOOK 93 PAGE 589-590

FOUNDED STREET MONUMENT
SCHEMITE TEE CIRCLE AND COUNTRY CLUB DRIVE
COUNTRY CLUB SUBDIVISION NO. 2
BOOK 93 PAGE 589-590



Surveyor's Certificate
I, Mark E. Duvon, do hereby certify that I am a Registered Land Surveyor licensed to practice in the State of Utah. I have made a survey of the parcel of land shown and described on the plat, and that by authority of the owner, Country Club Subdivision No. 2, I have duly and lawfully surveyed and returned to the County Clerk, Tooele County, Utah, a true and correct copy of the plat hereon shown, and that the same is a true and correct copy of the original survey records. It does not prevent in any way the enforcement of any other laws or ordinances.

Old Boundary Restriction
A plat of land located within the Town of Section 22, Township 2 South, Range 4 West, Salt Lake and Meridian, Salt Lake Base and Meridian, was partially recorded on February 12, 1958, and is of Country Club Subdivision No. 2, Plat filed in the Office of Tooele County in Book 93 of Pages 589 and 590.

New Boundary Restriction
A plat of Lot 1 of Country Club Subdivision No. 2 Amendment No. 1 Final Plat and the entire Country Club Subdivision No. 2 Plat, filed in the Office of Tooele County in Book 93 of Pages 589 and 590, together therewith on October 22, 1958, and a distance of 250.50 feet from the found monument of a point, which the South 102° 00' 00\"/>

Owner's Declaration
I, Mark E. Duvon, do hereby certify that I am the owner of the land shown and described on the plat hereon shown, and that I have duly and lawfully surveyed and returned to the County Clerk, Tooele County, Utah, a true and correct copy of the plat hereon shown, and that the same is a true and correct copy of the original survey records. It does not prevent in any way the enforcement of any other laws or ordinances.

Corporate Acknowledgment
On this 11th day of February, 2002, personally appeared before me, the undersigned County Clerk, in and for the County of Tooele, in said State of Utah, Mark E. Duvon, who after being duly sworn, acknowledged to me that in 1958 Corporation, that Country Club Subdivision No. 2 Amendment No. 1 Final Plat, was duly and lawfully surveyed and returned to the County Clerk, Tooele County, Utah, a true and correct copy of the plat hereon shown, and that the same is a true and correct copy of the original survey records.

General Acknowledgment
I, Mark E. Duvon, do hereby certify that I am the owner of the land shown and described on the plat hereon shown, and that I have duly and lawfully surveyed and returned to the County Clerk, Tooele County, Utah, a true and correct copy of the plat hereon shown, and that the same is a true and correct copy of the original survey records. It does not prevent in any way the enforcement of any other laws or ordinances.

County Clerk's Office
Mark E. Duvon, County Clerk
Tooele County, Utah

Approved as to Form & Content by Tooele County Clerk, Mark E. Duvon, on this 11th day of February, 2002.

Notary Public
I, Mark E. Duvon, do hereby certify that I am a Notary Public in and for the State of Utah, and that I have duly and lawfully surveyed and returned to the County Clerk, Tooele County, Utah, a true and correct copy of the plat hereon shown, and that the same is a true and correct copy of the original survey records. It does not prevent in any way the enforcement of any other laws or ordinances.

Approved as to Form & Content by Tooele County Clerk, Mark E. Duvon, on this 11th day of February, 2002.

Approved as to Form & Content by Tooele County Clerk, Mark E. Duvon, on this 11th day of February, 2002.

Approved as to Form & Content by Tooele County Clerk, Mark E. Duvon, on this 11th day of February, 2002.

Approved as to Form & Content by Tooele County Clerk, Mark E. Duvon, on this 11th day of February, 2002.

Approved as to Form & Content by Tooele County Clerk, Mark E. Duvon, on this 11th day of February, 2002.