

ORDINANCE 2005-02

AN ORDINANCE AMENDING THE OFFICIAL ZONING MAP OF TOOELE COUNTY; REZONING APPROXIMATELY 17 ACRES ON THE EAST SIDE OF LAKE POINT'S CENTER STREET BETWEEN STATE ROAD 36 AND CANYON ROAD FROM ITS PRESENT A-20 TO RR-1.

THE COUNTY LEGISLATIVE BODY OF THE COUNTY OF TOOELE ORDAINS

AS FOLLOWS:



SECTION I - AMENDMENT: Having conducted a public hearing thereon and finding good cause therefor, the official zoning map of Tooele County is hereby amended by changing the zoning designation of approximately 17 acres on the east side of Lake Point's Center Street from A-20 (Agricultural District) to RR-1 (Rural Residential District). A map showing the area of the rezone is attached hereto and by this reference made a part hereof.

SECTION II - REPEALER. Ordinances in conflict herewith are hereby repealed to the extent of such conflict.


SECTION III - EFFECTIVE DATE. This ordinance shall take effect fifteen (15) days after its passage, provided the same has been published, with the name of the members voting for and against the same, for at least one publication in one issue of a newspaper published in and having general circulation in Tooele County.

IN WITNESS WHEREOF, the legislative body of Tooele County passed, approved and enacted this ordinance this 18th day of January 2005.

ATTEST:


DENNIS D. EWING, Clerk


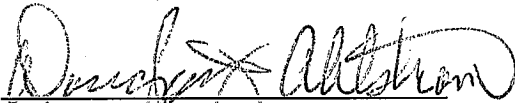
TOOELE COUNTY COMMISSION:


DENNIS ROCKWELL, Chairman

Ord. 2005-01

Commissioner Rockwell voted aye
Commissioner Lawrence voted aye
Commissioner Johnson voted aye

APPROVED AS TO FORM:



DOUGLAS J. AHLSTROM
Tooele County Attorney

GRANTSVILLE

TOOELE

LAKE POINT
ESTATES

CANYON RD

CENTER ST

I-80

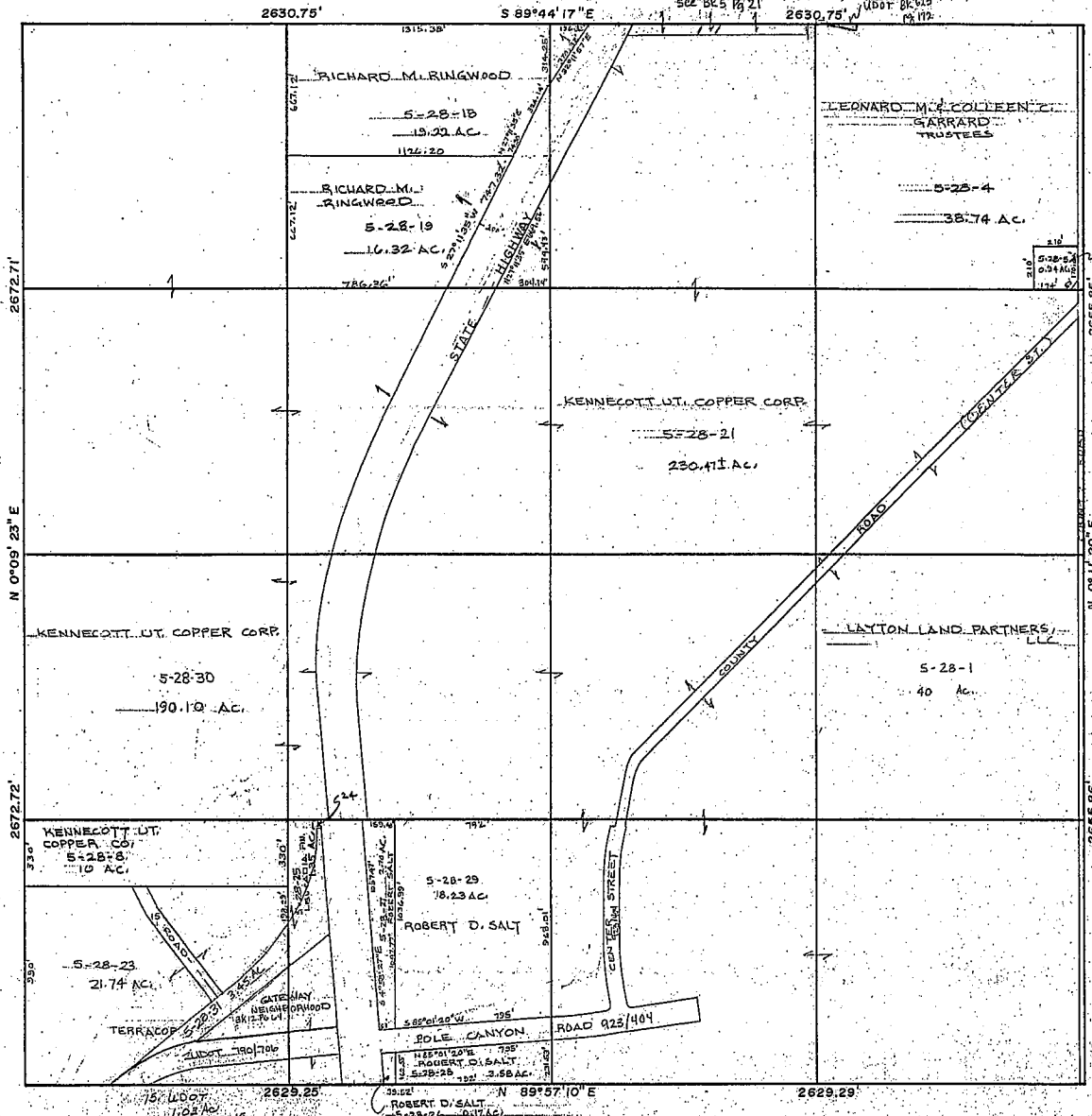
HWY 36

MOUNTAIN VIEW RD



SECTION 10 T 2S R 4W S.L.B.8 M.

THIS PLAT IS MADE SOLELY FOR THE PURPOSE OF ASSISTING IN LOCATING THE LAND, AND THE RECORDER ASSUMES NO LIABILITY FOR VARIATIONS, IF ANY, WITH AN ACTUAL SURVEY.



REVISIONS	INITIAL	AND DATE
1	RS	5-28-23 and 5-28-25 and added 5-28-31
2	RS	11/26/24

NOTES
5

U.S.T.C. approval
Date: TOOELE COUNTY, UTAH

PLAT DEPARTMENT
Section 10 T 2S R 4W
drawn by: RS date: 5/8
Scale: 1"=400'

Book page
5 28
Scale: 1"=400'