

**ORDINANCE 2003-37**

**AN ORDINANCE AMENDING THE OFFICIAL ZONING MAP OF TOOELE COUNTY; REZONING CERTAIN PROPERTY IN SECTION 29, TOWNSHIP 1 SOUTH, RANGE 11 WEST, SALT LAKE BASE AND MERIDIAN FROM MU-40 (MULTIPLE USE DISTRICT 40-ACRE) TO MG-EX (MINING, QUARRY, SAND AND GRAVEL EXCAVATION)**

**THE COUNTY LEGISLATIVE BODY OF THE COUNTY OF TOOELE ORDAINS  
AS FOLLOWS:**

**SECTION I - AMENDMENT:** Having conducted a public hearing thereon and finding good cause therefor, the official zoning map of Tooele County is hereby amended at Broken Arrow's request by changing the zoning designation of certain property in the north half of Section 29, Township 1 South, Range 11 West, Salt Lake Base and Meridian, from MU-40 to MG-EX (Mining, Quarry, Sand and Gravel Excavation).

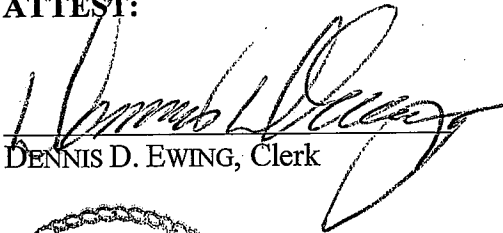
A map showing the area of the rezone is attached hereto and by this reference made a part hereof.

**SECTION II - REPEALER.** Ordinances in conflict herewith are hereby repealed to the extent of such conflict.

**SECTION III - EFFECTIVE DATE.** This ordinance shall take effect fifteen (15) days after its passage, provided the same has been published, with the name of the members voting for and against the same, for at least one publication in one issue of a newspaper published in and having general circulation in Tooele County.

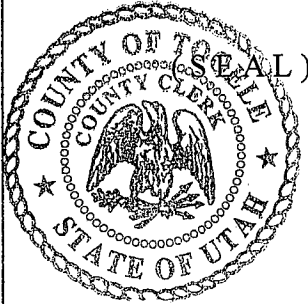
**IN WITNESS WHEREOF,** the legislative body of Tooele County passed, approved and enacted this ordinance this 9<sup>th</sup> day of December 2003.

**ATTEST:**

  
DENNIS D. EWING, Clerk

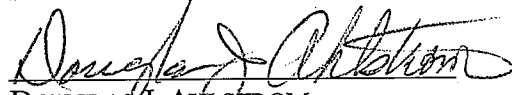
**TOOELE COUNTY COMMISSION:**

  
DENNIS ROCKWELL, Chairman



Commissioner Rockwell voted Aye  
Commissioner White voted Aye  
Commissioner Lawrence voted Aye

**APPROVED AS TO FORM:**

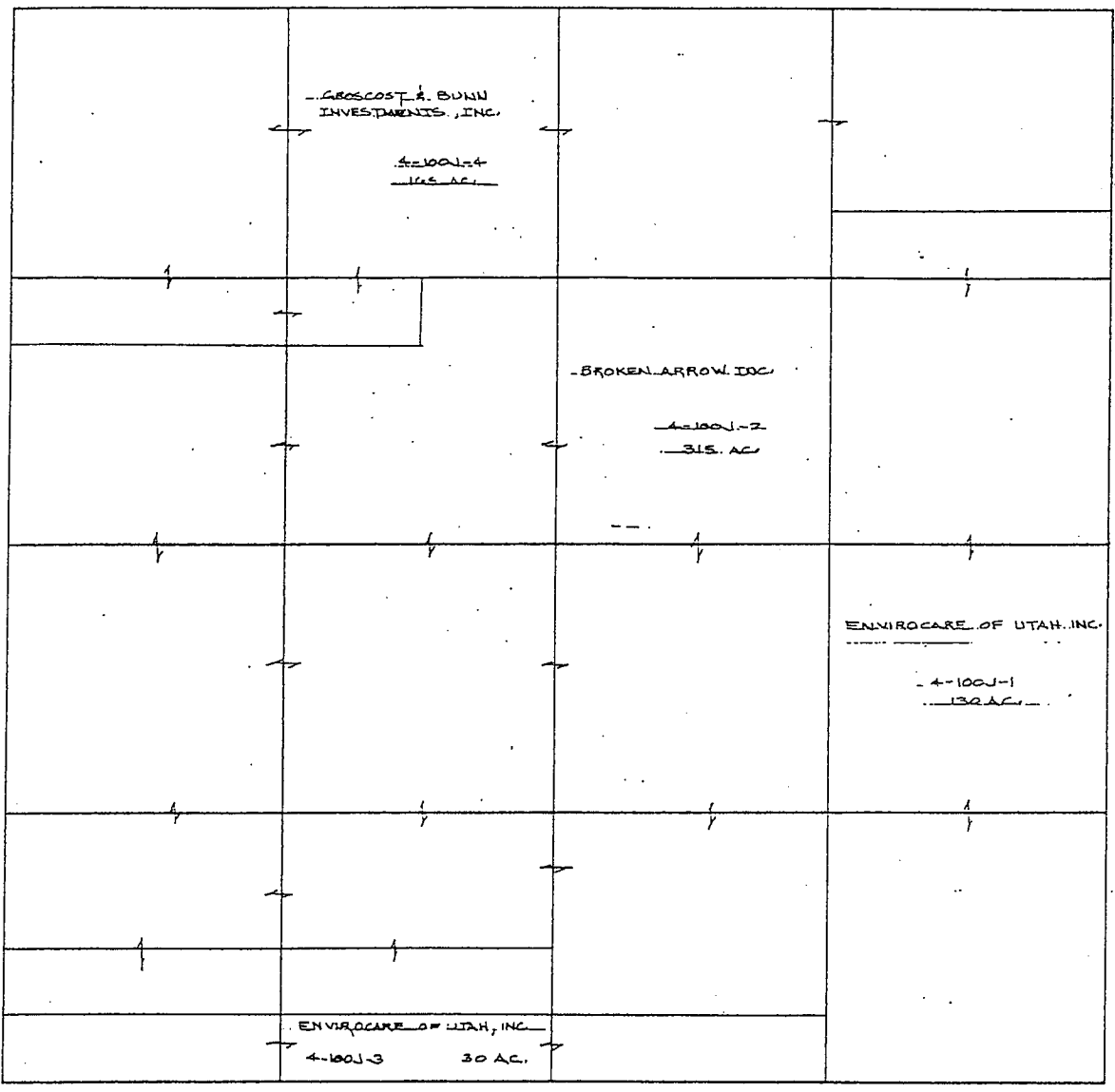
  
DOUGLAS J. AHLSTROM  
Tooele County Attorney

SCANNED 3/7/03

BOOK 4 PAGE 100J

SECTION 29 , T 1 S , R 11 W , S.L.B.&M.

THIS PLAT IS MADE SOLELY FOR THE PURPOSE OF ASSISTING IN LOCATING THE LAND, AND THE RECORDER ASSUMES NO LIABILITY FOR VARIATIONS, IF ANY, WITH AN ACTUAL SURVEY.



| REVISIONS  | INITIAL AND DATE | NOTES | U.S.T.C. approval Date: | PLAT DEPARTMENT     | Section 29 T1S R11W | book page  |
|------------|------------------|-------|-------------------------|---------------------|---------------------|------------|
| FEB 1 2003 | DD               |       |                         | TOOELE COUNTY, UTAH | drawn by: D         | 4 100J     |
|            | 4-2003-2         |       |                         |                     | date: 4/93          | scale 1-40 |