

ORDINANCE 2003-26

AN ORDINANCE AMENDING THE OFFICIAL ZONING MAP OF TOOELE COUNTY; REZONING CERTAIN PROPERTY IN SECTION 22, TOWNSHIP 2 SOUTH, RANGE 4 WEST, SALT LAKE BASE AND MERIDIAN, FROM A-20 (AGRICULTURAL 20-ACRE) TO C-G (COMMERCIAL GENERAL).

THE COUNTY LEGISLATIVE BODY OF THE COUNTY OF TOOELE ORDAINS AS FOLLOWS:

SECTION I - AMENDMENT: Having conducted a public hearing thereon and finding good cause therefor, the official zoning map of Tooele County is hereby amended at J. Dean Palmer's request by changing the zoning designation of certain property in Section 22, Township 2 South, Range 4 West, Salt Lake Base and Meridian, from A-20 (Agricultural 20- acre) to C-G (Commercial General).

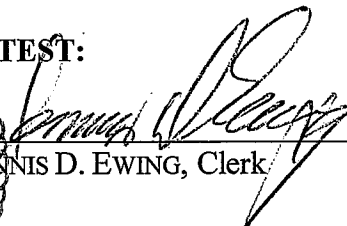
A map showing the area of the rezone is attached hereto and by this reference made a part hereof.

SECTION II - REPEALER. Ordinances in conflict herewith are hereby repealed to the extent of such conflict.

SECTION III - EFFECTIVE DATE. This ordinance shall take effect fifteen (15) days after its passage, provided the same has been published, with the name of the members voting for and against the same, for at least one publication in one issue of a newspaper published in and having general circulation in Tooele County.

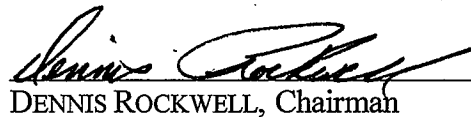
IN WITNESS WHEREOF, the legislative body of Tooele County passed, approved and enacted this ordinance this 14th day of October 2003.

ATTEST:

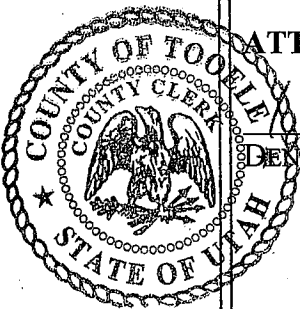


DENNIS D. EWING, Clerk

TOOELE COUNTY COMMISSION:



DENNIS ROCKWELL, Chairman

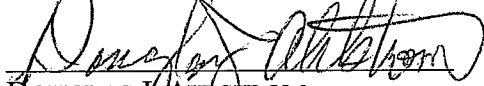


Ord. 2003-26

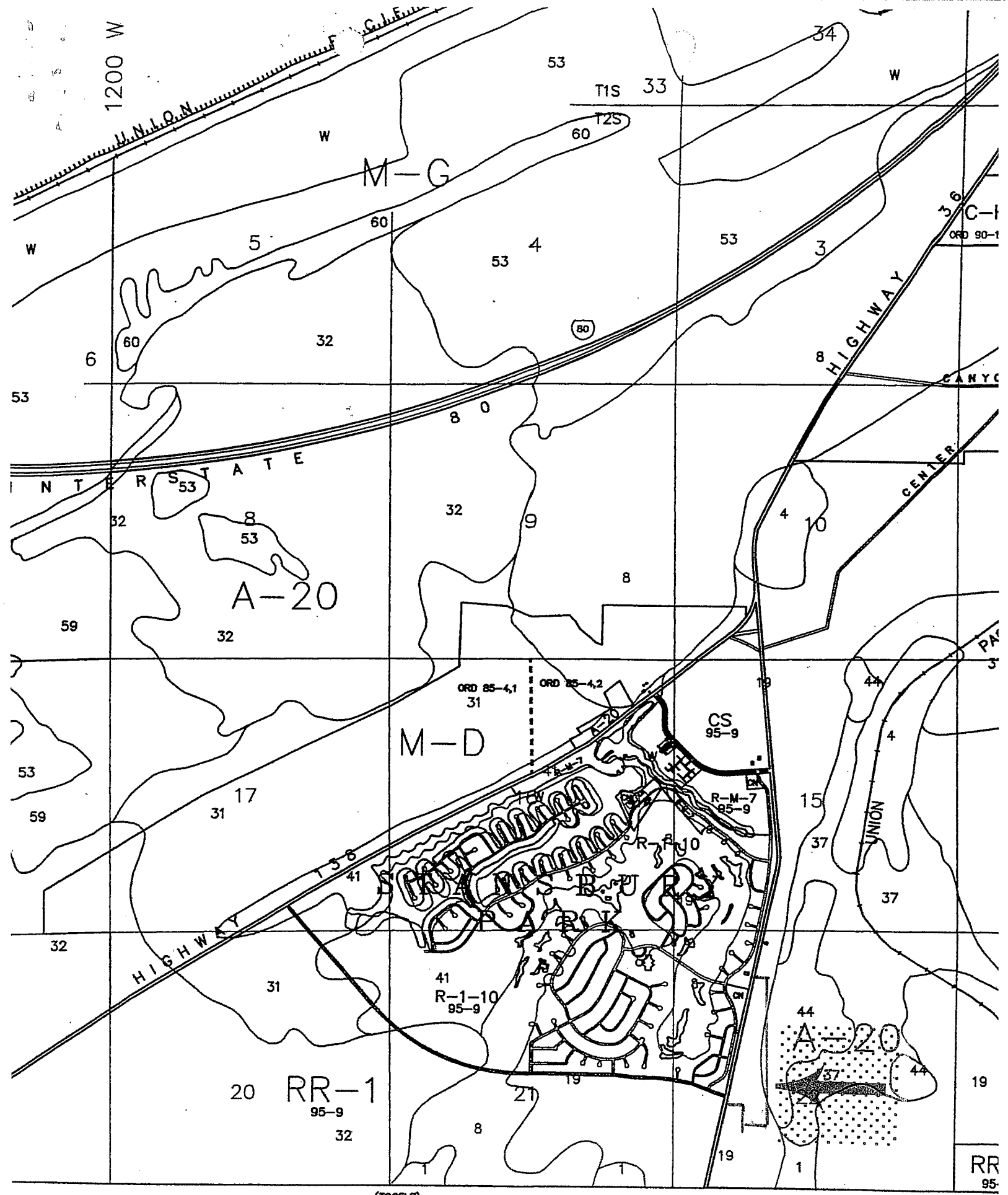
(SEAL)

Commissioner Rockwell voted aye
Commissioner White voted aye
Commissioner Lawrence voted aye

APPROVED AS TO FORM:



DOUGLAS J. AHLSTROM
Tooele County Attorney



(TOO LE)

MILLS JUNCTION QUADRANGLE

Soils Map

MU-40

A-20

MU-40

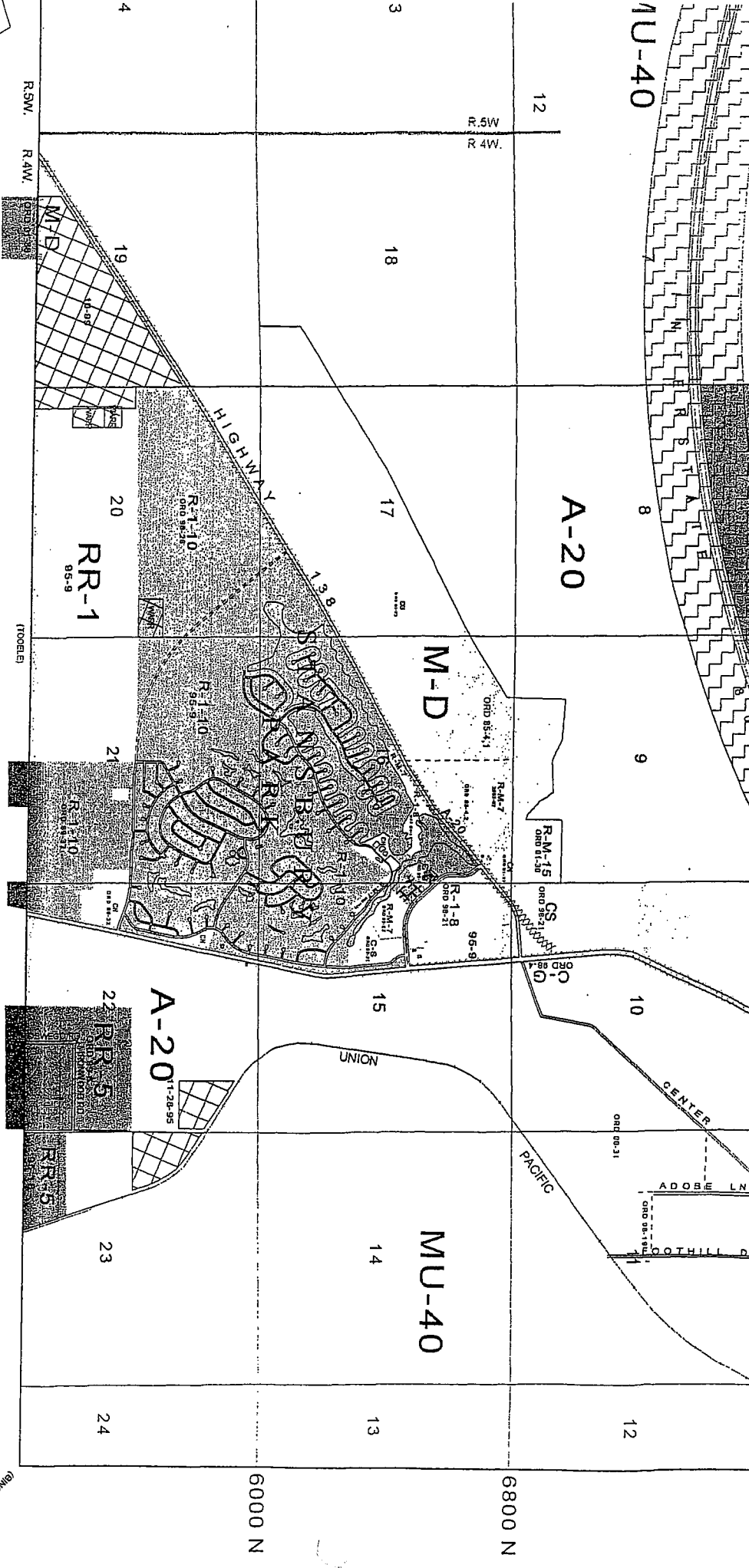
TOOELE COUNTY ZONING MAP

ZONING MAP LEGEND

	RR-1	RR-10	R-1-21	R-1-12	R-1-10	R-1-8	R-M-7
	MG-EX	MG-H	M-D	MU-40	P-2A	CN	HA XXXXXXXXXXXX
	A-40	C-H	C-G	CS	APA	TR	

MILLS JUNCTION QUADRANGLE
 SCALE 1:24000 (1" = 2000')

MAP BASED ON USGS 7.5 MINUTE QUADRANGLE
 MAPS. ORIGINAL ZONING INFORMATION TAKEN
 FROM MAPS DATED 1974.
 REVISED JUN 2003



(BIRCHMOUNT COUNTY)