

**RESOLUTION 2018-24**

**A RESOLUTION REPEALING ORDINANCES 2018-10, 2018-11, AND 2018-12**

**WHEREAS**, on October 16, 2018 the Tooele County Commission passed, approved, and enacted Ordinances 2018-10, 2018-11, and 2018-12 which rezoned certain properties located in Erda; and

**WHEREAS**, the applications for rezone were submitted by Joe White on behalf of the Carol Janice Weyland Trust regarding Ordinance 2018-10, the Sagers Family Limited Partnership regarding Ordinance 2018-11, and Wayne R. Shields, LLC regarding Ordinance 2018-12; and

**WHEREAS**, the County has received a formal request from counsel for Joe White that the rezone ordinances approved on October 16, 2018 now be repealed and rescinded.

**NOW, THEREFORE, BE IT RESOLVED BY THE TOOEELE COUNTY COMMISSION** that Tooele County Ordinances 2018-10, 2018-11, and 2018-12 are hereby repealed. Copies of the repealed ordinances are attached hereto and by this reference made a part hereof.

**EFFECTIVE DATE:** This resolution shall take effect immediately upon passage.

**DATED** this 27<sup>th</sup> day of December 2018.

**ATTEST:**

**TOOELE COUNTY COMMISSION:**

  
MARILYN K. GILLETTE, Clerk / Auditor

  
WADE B. BITNER, Chairman



Commissioner Bateman voted aye  
Commissioner Bitner voted aye  
Commissioner Milne voted aye

Res. 2018-24

**APPROVED AS TO FORM:**



SCOTT A. BROADHEAD  
Tooele County Attorney

**ORDINANCE 2018-10**

**AN ORDINANCE AMENDING THE OFFICIAL ZONING MAP OF TOOELE COUNTY; REZONING APPROXIMATELY 108.63 ACRES OF LAND, LOCATED AT 4409 N. DROUBAY ROAD IN ERDA, FROM RR-5 TO RR-1 ZC**

**NOW, THEREFORE, BE IT ORDAINED BY THE LEGISLATIVE BODY OF TOOELE COUNTY, UTAH AS FOLLOWS:**

**SECTION I – AMENDMENT.** Pursuant to Utah Code Annotated Sections 17-27a-502 and 17-27a-503, the Tooele County Planning Commission conducted a public hearing on the application for rezone submitted by Joe White on behalf of the Carol Janice Weyland Trust and made an unfavorable recommendation to amend the official zoning map.

Notice having been provided as required by UCA Subsection 17-27a-205(1)(b) and having held a public meeting, the official zoning map of Tooele County is hereby amended by changing the zoning designation of approximately 108.63 acres, known as Parcel 05-043-0-0006, located at 4409 N. Droubay Road in Erda, Tooele County, Utah from RR-5 (Rural Residential, Five-Acre Minimum Lot Size) to RR-1 (Rural Residential, One-Acre Minimum Lot Size) with the zoning condition that the subject property is limited to an overall density of one dwelling unit per acre with a mix of lot sizes ranging from 6,000 square feet to 21,000 square feet.

Maps showing the area of the rezone are attached hereto and by this reference made a part hereof.

**SECTION II – REPEALER.** Ordinances and resolutions in conflict herewith are hereby repealed to the extent of such conflict.

Ord. 2018-10

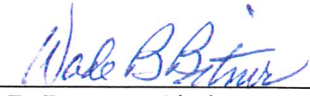
**SECTION III – EFFECTIVE DATE.** This ordinance shall become effective fifteen (15) days after its passage, provided it has been published, or at such publication date if more than fifteen (15) days after passage.

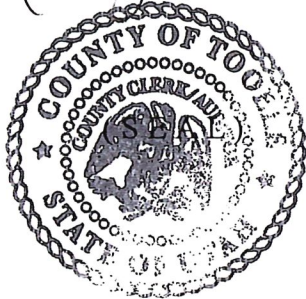
**IN WITNESS WHEREOF** the Tooele County Commission, which is the legislative body of Tooele County, passed, approved, and enacted this ordinance this 16<sup>th</sup> day of October 2018.

**ATTEST:**

**TOOELE COUNTY COMMISSION:**

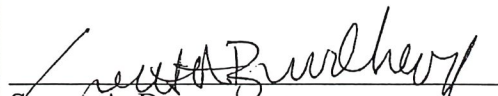
  
MARILYN K. GILLETTE, Clerk/Auditor

  
WADE B. BITNER, Chairman



Commissioner Bateman voted aye  
Commissioner Bitner voted aye  
Commissioner Milne voted aye

**APPROVED AS TO FORM:**

  
SCOTT A. BROADHEAD  
Tooele County Attorney

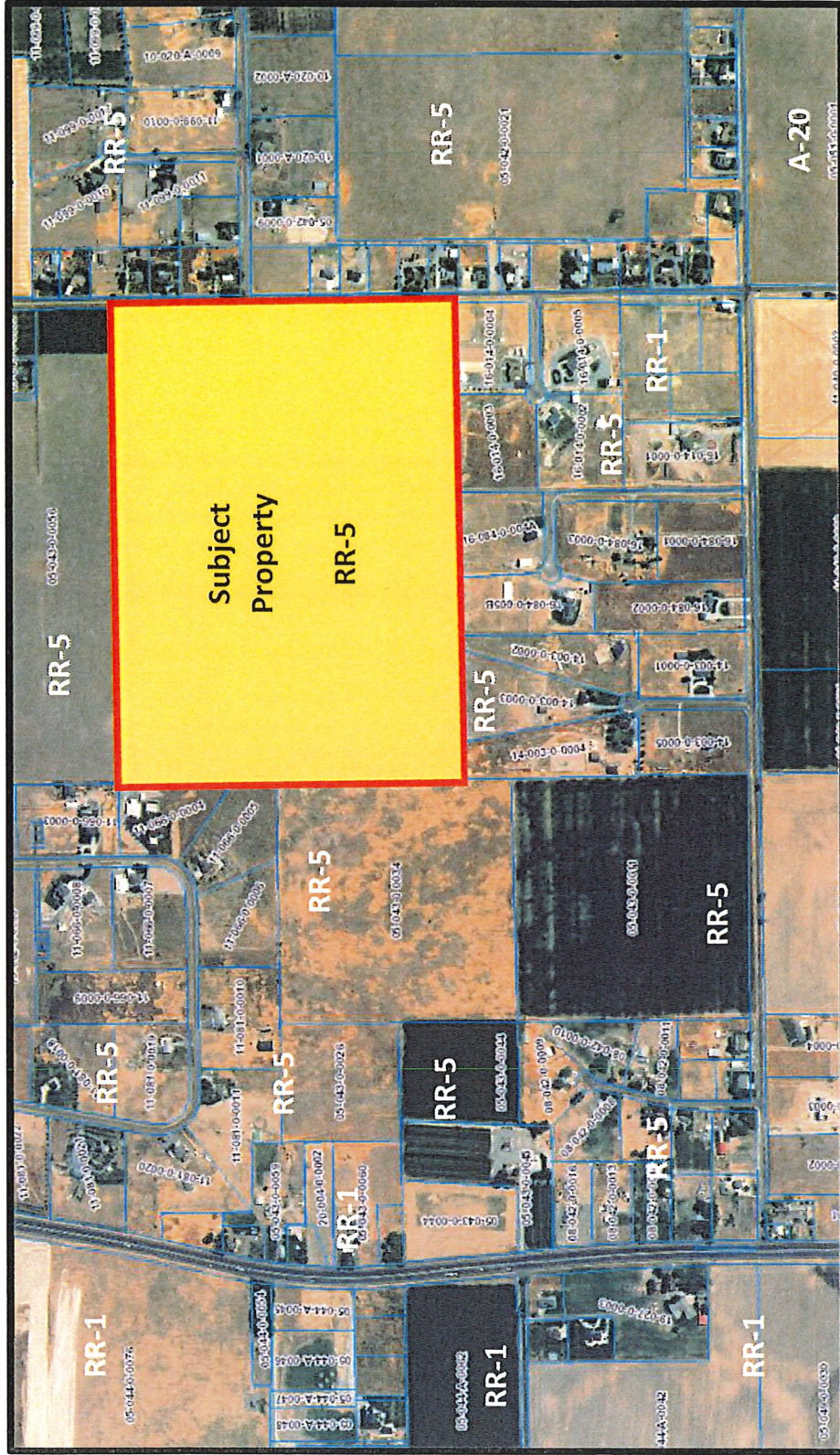






**REZ 2018-05: Rezone from RR-5 (Rural Residential, 5 Acre Min) to RR-1 (Rural Residential, 1 Acre Min)**

4409 North Droubay Road: (Parcel ID: 05-043-0-0006)



**ORDINANCE 2018-11**

**AN ORDINANCE AMENDING THE OFFICIAL ZONING MAP OF TOOELE COUNTY; REZONING APPROXIMATELY 44.32 ACRES OF LAND, LOCATED AT 125 E. ERDA WAY, FROM RR-5 TO R-1-10 ZC**

**NOW, THEREFORE, BE IT ORDAINED BY THE LEGISLATIVE BODY OF TOOELE COUNTY, UTAH AS FOLLOWS:**

**SECTION I – AMENDMENT.** Pursuant to Utah Code Annotated Sections 17-27a-502 and 17-27a-503, the Tooele County Planning Commission conducted a public hearing on the application for rezone submitted by Joe White on behalf of the Sagers Family Limited Partnership and made a favorable recommendation to amend the official zoning map (a motion to make an unfavorable recommendation did not pass).

Notice having been provided as required by UCA Subsection 17-27a-205(1)(b) and having held a public meeting, the official zoning map of Tooele County is hereby amended by changing the zoning designation of approximately 44.32 acres, known as Parcel 19-097-0-0004, located at 125 E. Erda Way in Erda, Tooele County, Utah from RR-5 (Rural Residential, Five-Acre Minimum Lot Size) to R-1-10 (Residential, Single Family, 10,000 Square-Foot Minimum Lot Size) with the zoning condition that the subject property is limited to a residential density of 2.77 dwelling units per acre with a mix of lot sizes ranging from 6,000 square feet to 21,000 square feet.

Maps showing the area of the rezone are attached hereto and by this reference made a part hereof.

**SECTION II – REPEALER.** Ordinances and resolutions in conflict herewith are hereby repealed to the extent of such conflict.

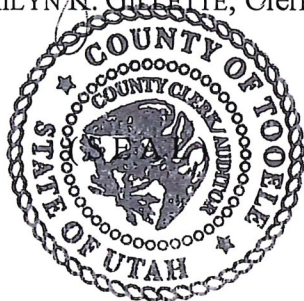
Ord. 2018-11

**SECTION III – EFFECTIVE DATE.** This ordinance shall become effective fifteen (15) days after its passage, provided it has been published, or at such publication date if more than fifteen (15) days after passage.

**IN WITNESS WHEREOF** the Tooele County Commission, which is the legislative body of Tooele County, passed, approved, and enacted this ordinance this 16<sup>th</sup> day of October 2018.

**ATTEST:**

  
Marilyn K. Gillette, Clerk/Auditor

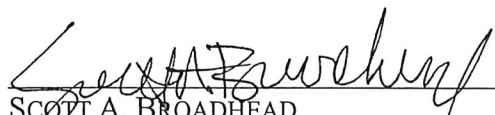


**TOOELE COUNTY COMMISSION:**

  
WADE B. BITNER, Chairman

Commissioner Bateman voted Aye  
Commissioner Bitner voted Aye  
Commissioner Milne voted Aye

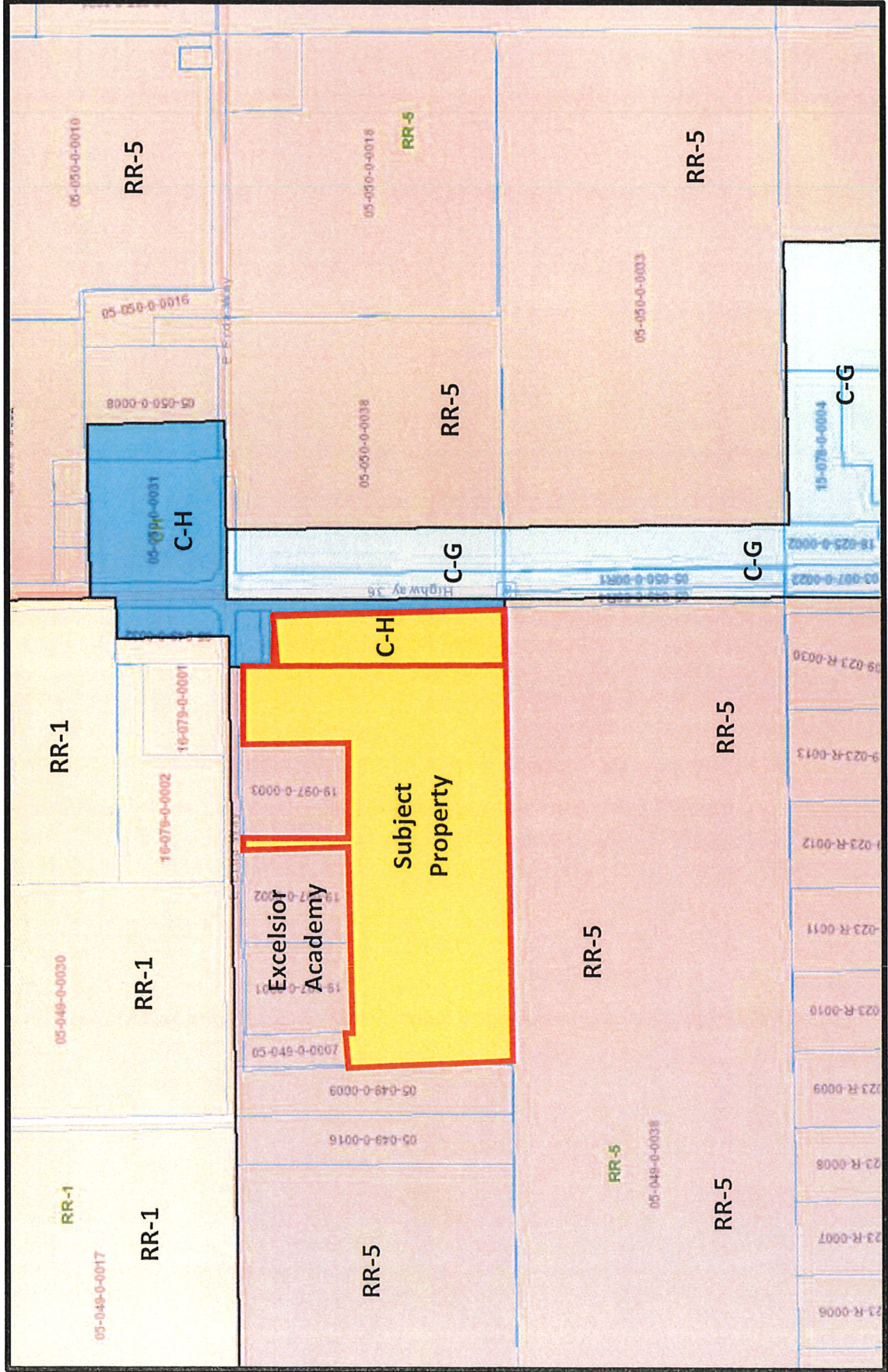
**APPROVED AS TO FORM:**

  
SCOTT A. BROADHEAD  
Tooele County Attorney



**REZ 2018-06: Rezone from RR-5 (Rural Residential, 5 Acre Min) to R-1-10 (Single-Family, 10,000 SF Min)**

125 East Erda Way: (Parcel ID: 19-097-0-0004)





**REZ 2018-06: Rezone from RR-5 (Rural Residential, 5 Acre Min) to R-1-10 (Single-Family, 10,000 SF Min)**

125 East Erda Way: (Parcel ID: 19-097-0-0004)



**ORDINANCE 2018-12**

**AN ORDINANCE AMENDING THE OFFICIAL ZONING MAP OF TOOELE COUNTY; REZONING APPROXIMATELY 156.47 ACRES OF LAND, LOCATED SOUTH OF ERDA WAY AND WEST OF SR-36, FROM RR-5 TO R-1-10 ZC**

**NOW, THEREFORE, BE IT ORDAINED BY THE LEGISLATIVE BODY OF TOOELE COUNTY, UTAH AS FOLLOWS:**

**SECTION I – AMENDMENT.** Pursuant to Utah Code Annotated Sections 17-27a-502 and 17-27a-503, the Tooele County Planning Commission conducted a public hearing on the application for rezone submitted by Joe White on behalf of the Wayne R. Shields LLC and made a favorable recommendation to amend the official zoning map (a motion to make an unfavorable recommendation did not pass).

Notice having been provided as required by UCA Subsection 17-27a-205(1)(b) and having held a public meeting, the official zoning map of Tooele County is hereby amended by changing the zoning designation of approximately 156.47 acres, known as Parcel 05-049-0-0038, located south of Erda Way and west of SR-36 in Erda, Tooele County, Utah from RR-5 (Rural Residential, Five-Acre Minimum Lot Size) to R-1-10 (Residential, Single Family, 10,000 Square-Foot Minimum Lot Size) with the zoning condition that the subject property is limited to a residential density of 2.7 dwelling units per acre with a mix of lot sizes ranging from 6,000 square feet to 21,000 square feet.

Maps showing the area of the rezone are attached hereto and by this reference made a part hereof.

**SECTION II – REPEALER.** Ordinances and resolutions in conflict herewith are hereby repealed to the extent of such conflict.



**SECTION III – EFFECTIVE DATE.** This ordinance shall become effective fifteen (15) days after its passage, provided it has been published, or at such publication date if more than fifteen (15) days after passage.

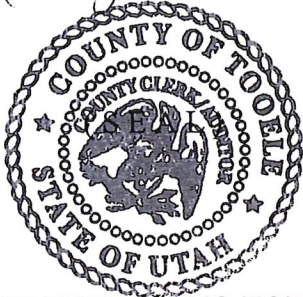
**IN WITNESS WHEREOF** the Tooele County Commission, which is the legislative body of Tooele County, passed, approved, and enacted this ordinance this 16<sup>th</sup> day of October 2018.

**ATTEST:**

**TOOELE COUNTY COMMISSION:**

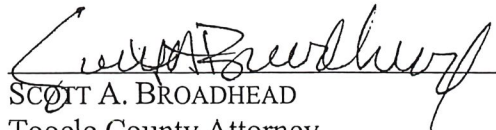
  
MARILYN K. GILLETTE, Clerk/Auditor

  
WADE B. BITNER, Chairman



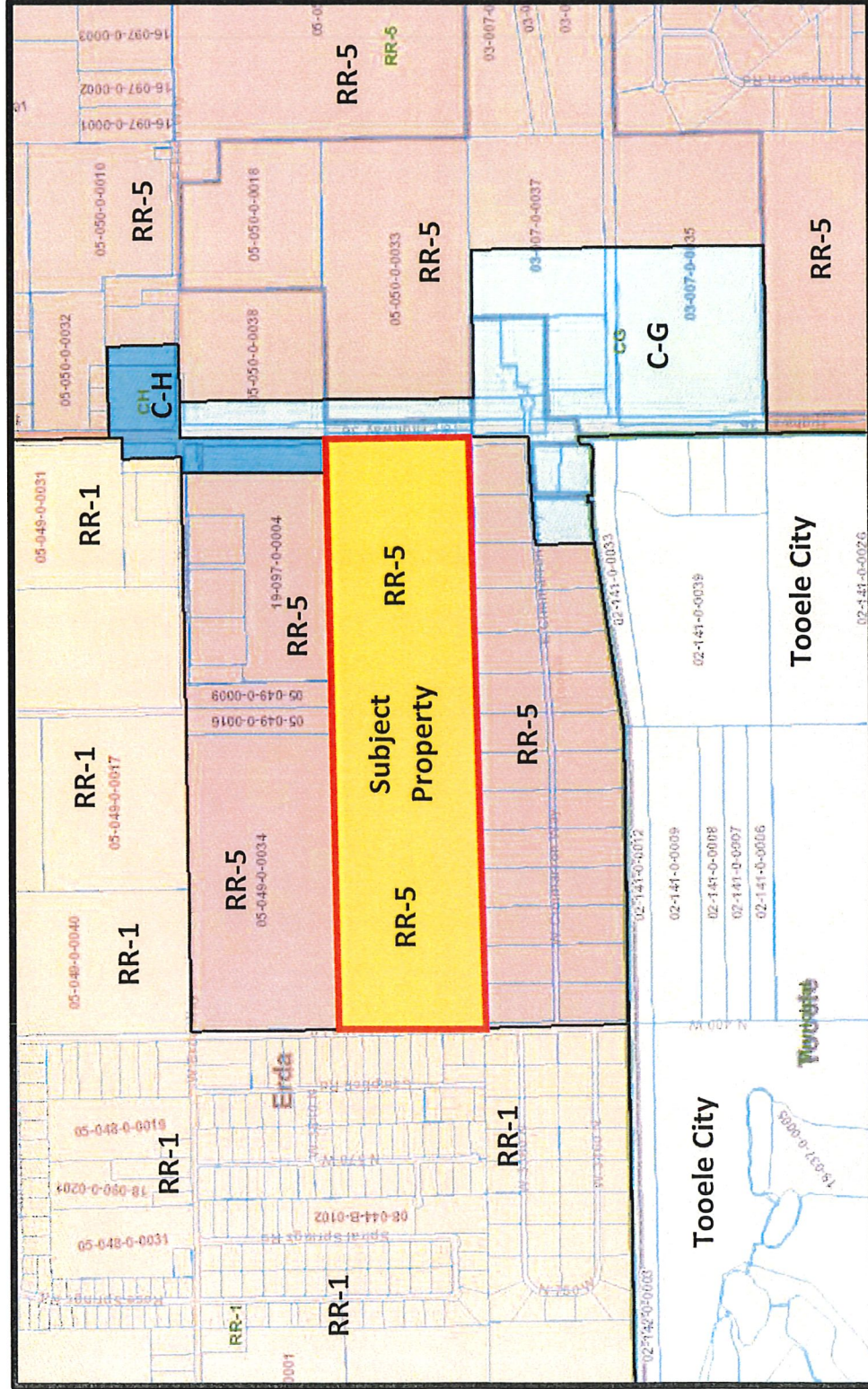
Commissioner Bateman voted aye  
Commissioner Bitner voted aye  
Commissioner Milne voted aye

**APPROVED AS TO FORM:**

  
SCOTT A. BROADHEAD  
Tooele County Attorney

**REZ 2018-07: Rezone from RR-5 (Rural Residential, 5 Acre Min) to R-1-10 (Single-Family, 10,000 SF Min)**

Unaddressed Parcel: (Parcel ID: 05-049-0-0038)





**REZ 2018-07: Rezone from RR-5 (Rural Residential, 5 Acre Min) to R-1-10 (Single-Family, 10,000 SF Min)**

*Unaddressed Parcel: (Parcel ID: 05-049-0-0038)*

