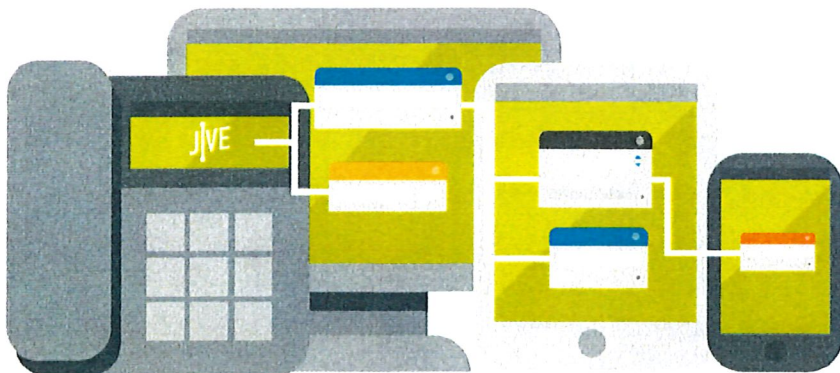


TOOELE COUNTY CORPORATON
CONTRACT # 18-10-01



Your phone system in the cloud.

Tooele County



Prepared by:
Evolve NetworX

Ken Romero

801-520-9999

ken@evolvenetworx.com

www.EvolveNetworX.com



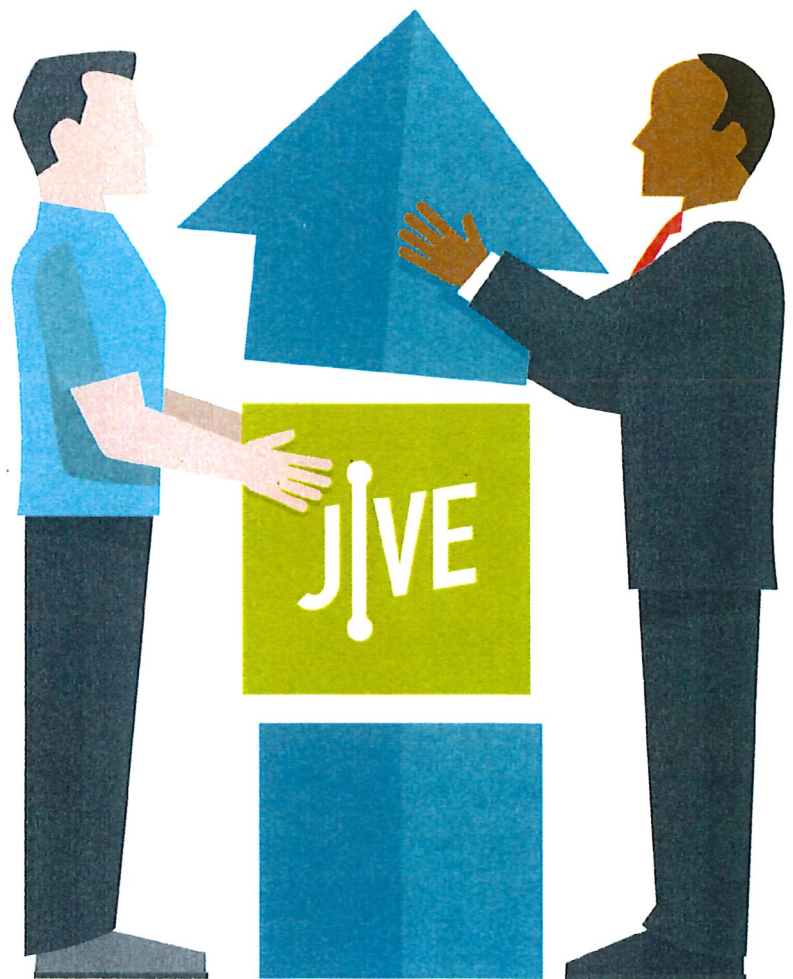
Don't settle for the average online buying experience.

Purchasing through a Jive Certified Partner ensures:

- Enhanced setup and install experience
- Greater order success
- Custom designed solution
- Network pre-qualification
- Local resource and advocate
- On-site setup and training where available (check with partner for details)

Our customers receive:

- Dedicated installation manager
- Unlimited customer service
- Unlimited technical support

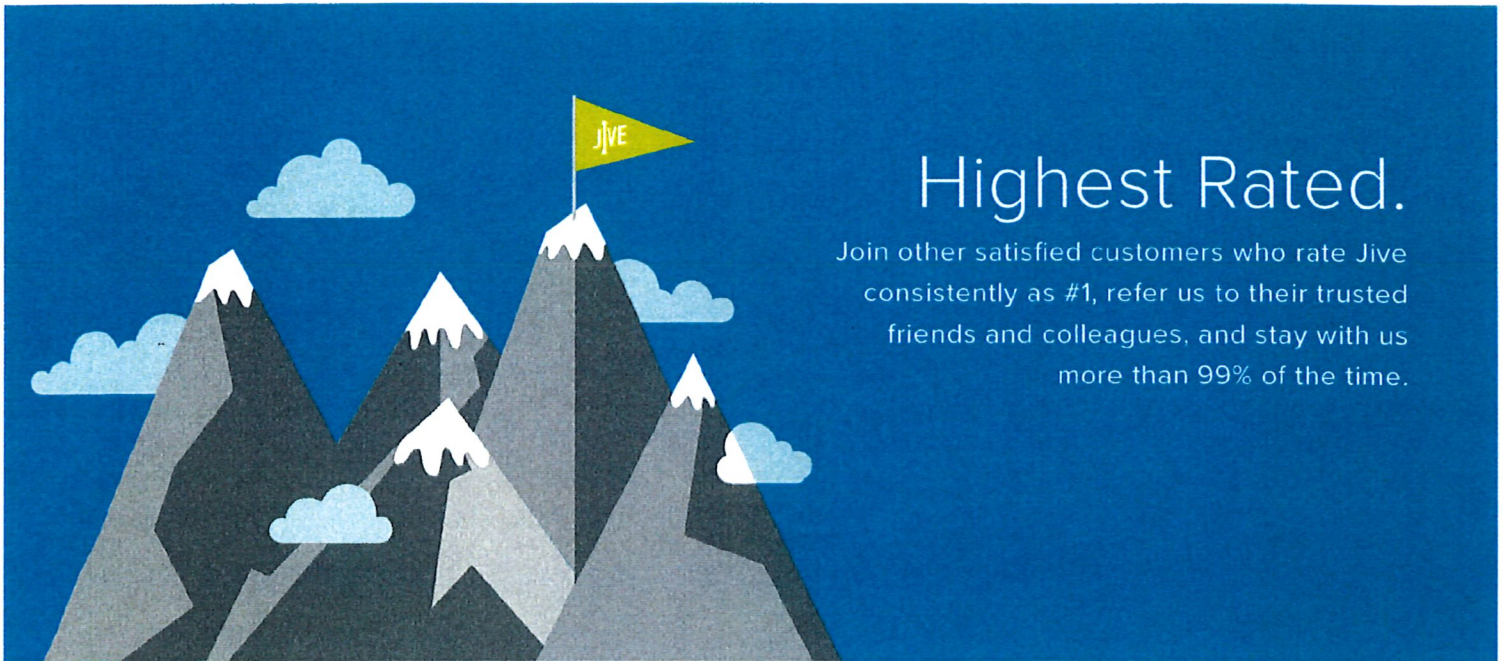
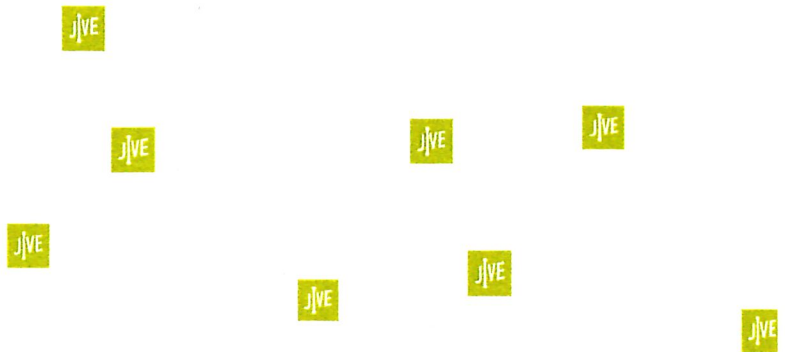




Why Jive?

Most Reliable.

Experience unmatched uptime with 7 U.S. datacenters—more than our top three competitors combined.

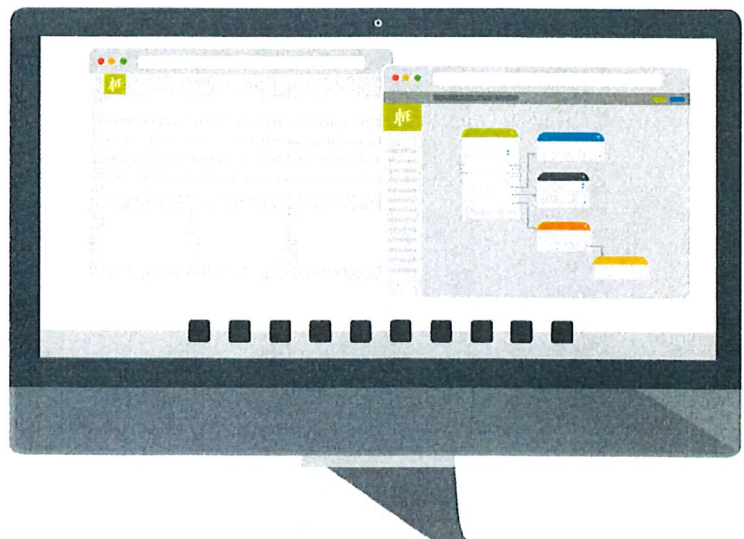


Highest Rated.

Join other satisfied customers who rate Jive consistently as #1, refer us to their trusted friends and colleagues, and stay with us more than 99% of the time.

Easiest to Use.

Enjoy a rich, enterprise feature set with a simple user interface and intuitive platform control.





Quote #00236699
 Service Term: 36 Months
 Expiration Date: 12/31/18

Evolve NetworkX

Ken Romero

801-520-9999

ken@evolvenetworkx.com

www.EvolveNetworkX.com

Proposal for Voice Services

Tooele County

TODAY'S TOTAL	QTY	MSRP	DISCOUNT	JIVE PRICE	TOTAL
Voice - Per User Setup	118	\$100.00	\$95.00	\$5.00	\$590.00
Voice Number Port Fee	600	\$5.00	\$4.00	\$1.00	\$600.00
Voice - Account Configuration/Setup	5	\$1,000.00	\$800.00	\$200.00	\$1,000.00
JBC with Analog Failover (8 Ports) 8 FXO	5	\$850.00	\$0.00	\$850.00	\$4,250.00
				TOTAL	\$6,440.00


SPECIAL OFFERS APPLIED

- ✓ First 2 Months Free
- ✓ Free Internat'l Calling (Select Countries)

MONTHLY TOTAL	QTY	MSRP	DISCOUNT	JIVE PRICE	TOTAL
Voice - Standard DID - Monthly Charge	600	\$1.75	\$1.50	\$0.25	\$150.00
Connect Bundle: Jive + GoToMeeting Pro	297	\$39.95	\$24.00	\$15.95	\$4,737.15
Interconnected VoIP, Low Usage - Monthly Charge	118	\$12.95	\$3.00	\$9.95	\$1,174.10
				TOTAL	\$6,061.25

The Customer will have a small proof of concept deployment through no later than November 30, 2018. During the proof of concept period, the Customer may terminate this agreement without penalty by giving written notice to Grant Chandler with a copy to legal@jive.com. At the sooner of December 1, 2018 or when the Customer moves to full deployment, this termination right expires. The term of this agreement will be measured from December 1, 2018.

By authorizing this quote the customer agrees to the terms of service available at jive.com/legal.


 Customer Signature

10-25-18
 Signature Date

TODAY'S TOTAL

\$6,440.00

MONTHLY TOTAL

\$6,061.25

If you need assistance with this quote or any product offerings, please contact partner support at **888.990.4262**



Hardware Specs

MODEL

JBC with Analog Failover (8 Ports) 8
FXO

No Image Available.

DESCRIPTION

JBC with AudioCodes MP118/80/SIP