

## **ORDINANCE 2017-13**

**AN ORDINANCE AMENDING THE OFFICIAL ZONING MAP OF TOOELE COUNTY; REZONING APPROXIMATELY 38.09 ACRES OF LAND, LOCATED WEST OF MORMON TRAIL ROAD AND NORTHWEST OF BOX ELDER CANYON ROAD, FROM M-D TO RRS**

**NOW, THEREFORE, BE IT ORDAINED BY THE LEGISLATIVE BODY OF TOOELE COUNTY, UTAH AS FOLLOWS:**

**SECTION I – AMENDMENT.** Pursuant to Utah Code Annotated Sections 17-27a-502 and 17-27a-503, the Tooele County Planning Commission conducted a public hearing on the application for rezone submitted by Carolyn Manning on behalf of Janna Lee Manning, and recommended the amendment to the official zoning map.

Notice having been provided as required by UCA Subsection 17-27a-205(1)(b) and having held a public meeting, the official zoning map of Tooele County is hereby amended by changing the zoning designation of approximately 38.09 acres, known as Parcel 06-0028-0-0006, located west of the Mormon Trail Road and Northwest of Box Elder Canyon Road in Tooele County, Utah from M-D (Manufacturing Distribution) to RRS (Recreation and Racing Sports). The legal description of the rezoned property is as follows:

NW 1/4 OF NW 1/4 OF SECTION 3, T4S, R6W, SLB&M, TOGETHER WITH A 3 ROD R/W RUN N ALG W SIDE E LI NE 1/4 OF NW 1/4 OF SEC 3, & RUN TH W ALG N SI OF TOWNSHIP LI FROM THE S 1/4 COR OF SECTION 34, T3S, R6W, SLB&M, TO SW COR OF SE 1/4 OF SEC 33, T3S, R6W, SLB&M LESS THE SOUTH 60 FEET TO ORSON P. KIMBALL/ 6-28-19. (38.09 AC)

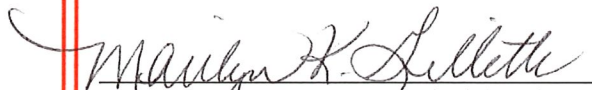
A map showing the area of the rezone is attached hereto and by this reference made a part hereof.

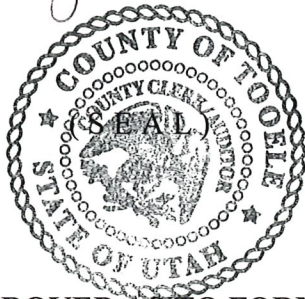
**SECTION II – REPEALER.** Ordinances and resolutions in conflict herewith are hereby repealed to the extent of such conflict.

**SECTION III – EFFECTIVE DATE.** This ordinance shall become effective fifteen (15) days after its passage, provided it has been published, or at such publication date if more than fifteen (15) days after passage.


**IN WITNESS WHEREOF** the Tooele County Commission, which is the legislative body of Tooele County, passed, approved, and enacted this ordinance this 15<sup>th</sup> day of August 2017.

**ATTEST:**

  
MARILYN K. GILLETTE, Clerk/Auditor



**APPROVED AS TO FORM:**

  
SCOTT A. BROADHEAD  
Tooele County Attorney

**TOOELE COUNTY COMMISSION:**

  
WADE B. BITNER, Chairman

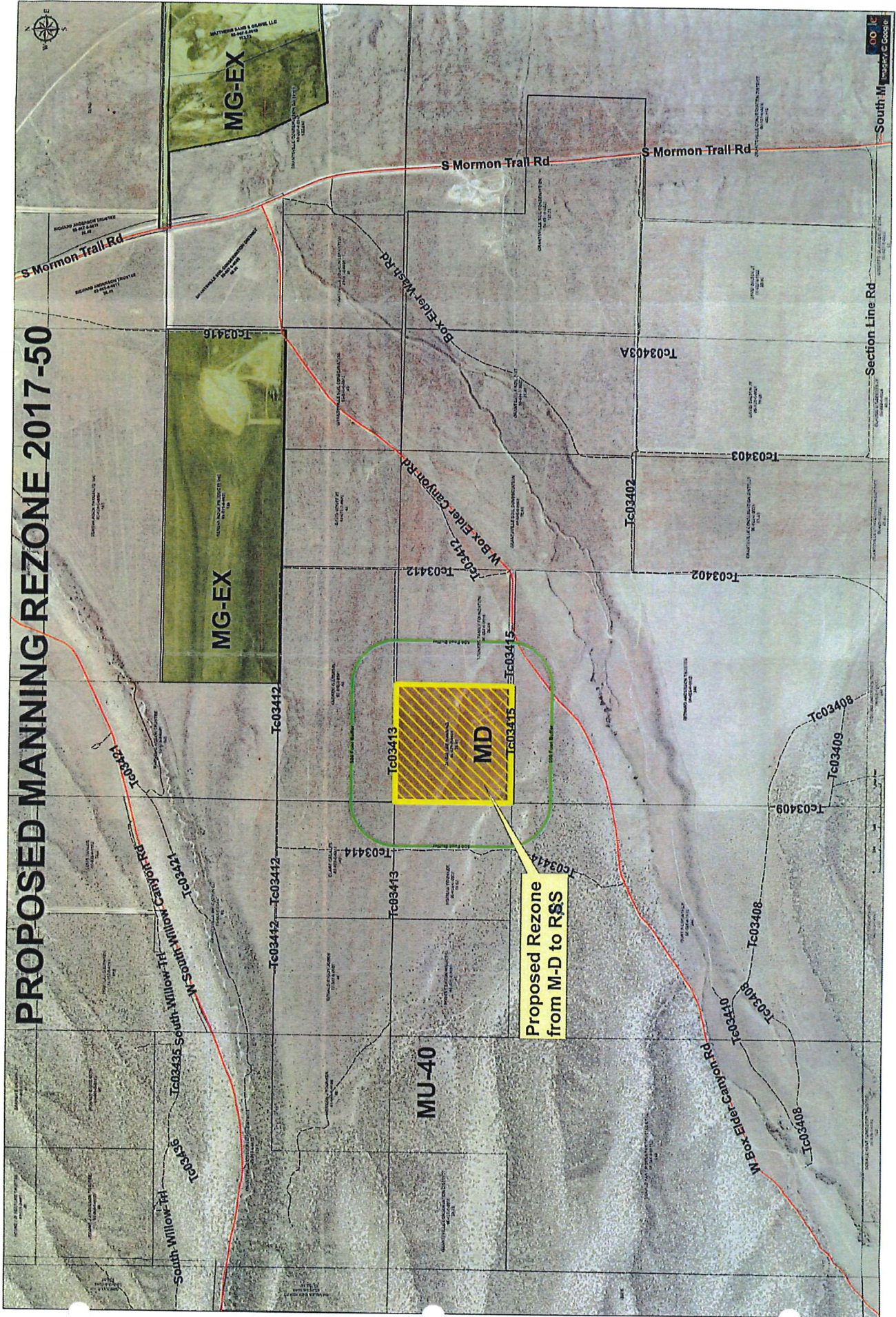
Commissioner Bateman voted aye

Commissioner Bitner voted aye

Commissioner Milne voted aye



# PROPOSED MANNING REZONE 2017-50



R&S ZONE