

ORDINANCE 2007-02

AN ORDINANCE AMENDING THE OFFICIAL ZONING MAP OF TOOELE COUNTY; REZONING APPROXIMATELY 81 ACRES OF PROPERTY OWNED BY WOFFORD FARMS LLC AND JOHN COOK FAMILY TRUST FOR THE LAST CHANCE SKI RANCH PUD, LOCATED NORTHWEST OF VERNON, FROM MU-40 TO RR-5

NOW, THEREFORE, BE IT ORDAINED BY THE LEGISLATIVE BODY OF TOOELE COUNTY, UTAH AS FOLLOWS:

SECTION I - AMENDMENT. Pursuant to Utah Code Sections 17-27a-502 and 503, the Tooele County Planning Commission conducted a public hearing on Rick Lybbert's application for rezone and recommended the amendment to the official zoning map.

Notice having been provided as required by Subsection 17-27a-205(1)(b) and having held a public meeting, the official zoning map of Tooele County is hereby amended by changing the zoning designation of property owned by Wofford Farms LLC and John Cook Family Trust, located Northwest of Vernon, being 80.98 ± acres located in Parcel #07-023-0-0004 and Parcel #07-023-0-0006, in the Southern half of the NE quarter of Section 12, Township 8 South, Range 6 West, Salt Lake Base and Meridian, from MU-40 (Multiple-Use, 40-Acre Minimum Lot Size) to RR-5 (Rural Residential, Five Acre Minimum Lot Size). Maps of the rezone are attached hereto and by this reference made a part hereof.

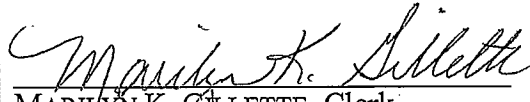
SECTION II - REPEALER. Ordinances and resolutions in conflict herewith are hereby repealed to the extent of such conflict.

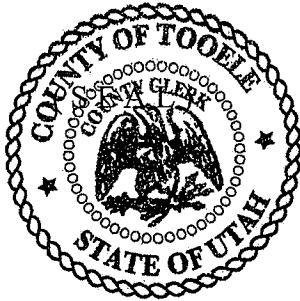
SECTION III - EFFECTIVE DATE. This ordinance shall become effective 15 days after its passage provided it has been published, or at such publication date if more than 15 days after passage.

IN WITNESS WHEREOF the Tooele County Commission, which is the legislative body of Tooele County, passed, approved and enacted this ordinance this 23rd day of January 2007.

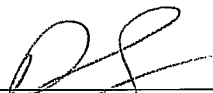
Ord. 2007-02

ATTEST:


MARIILYN K. GILLETTE, Clerk



APPROVED AS TO FORM:


DOUG HOGAN
Tooele County Attorney

TOOELE COUNTY COMMISSION:


COLLEEN S. JOHNSON, Chairman

Commissioner Johnson voted aye
Commissioner Clegg voted aye
Commissioner Hurst voted aye

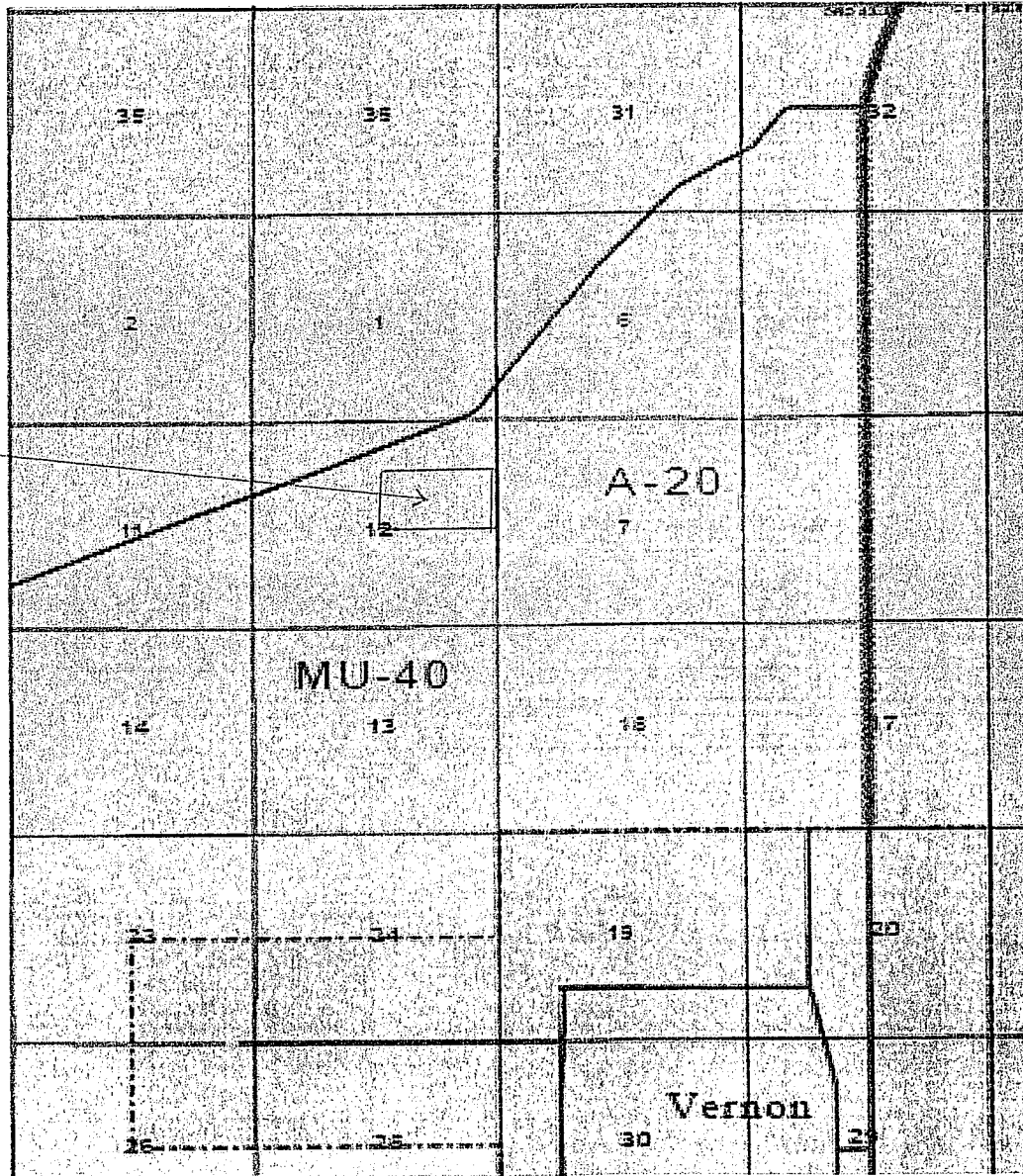
TOOELE COUNTY PLANNING COMMISSION

IN THE MATTER OF: LAST CHANCE SKI
RANCH PUD AND REZONE

FINDING OF FACT
AND RECOMMENDATION

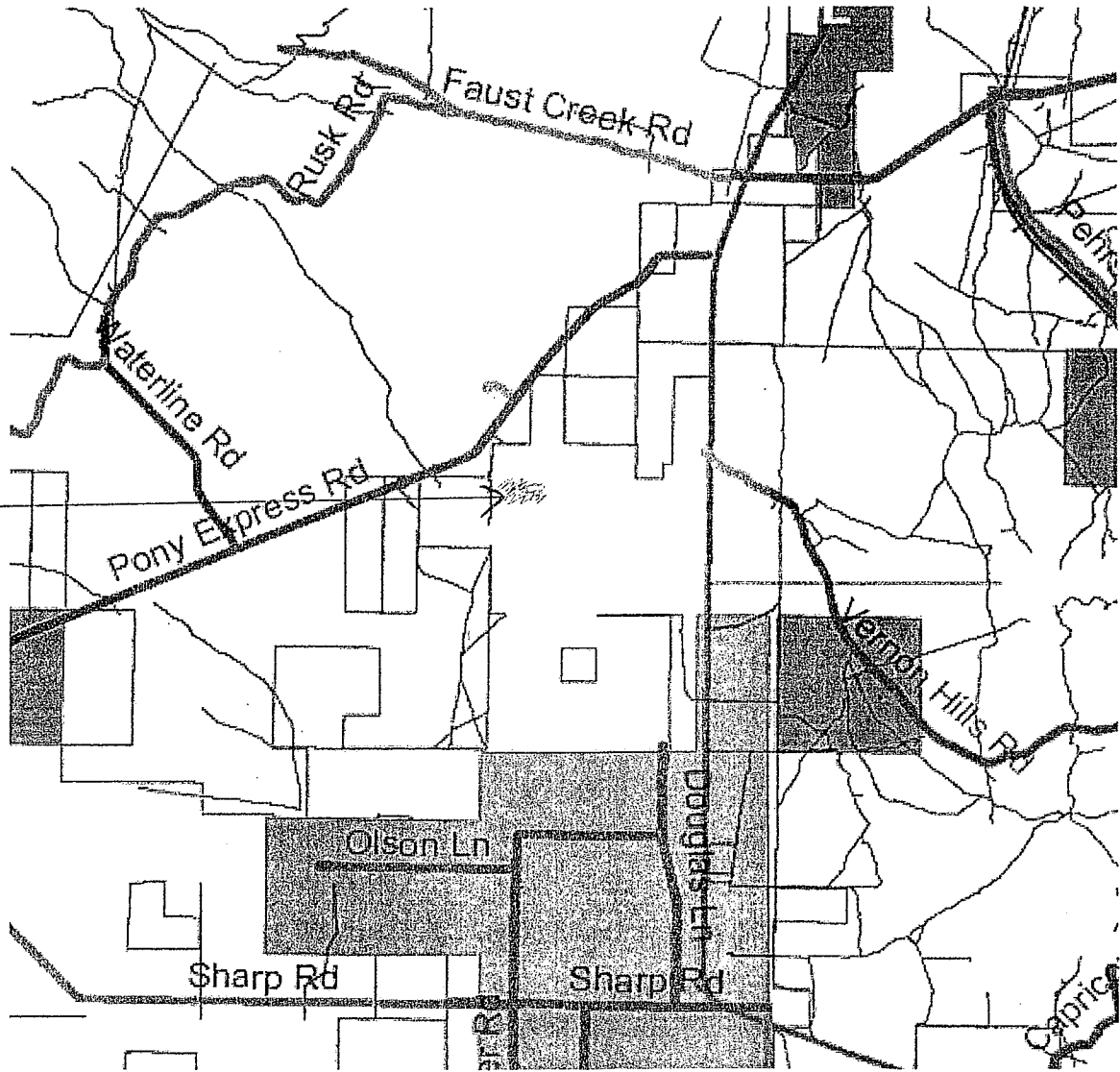
APPLICATION FOR: REZONE
RECOMMENDATION AND
CONCEPT APPROVAL (PUD/REZ 06-
03000010)

Rezone
+
Concept Plan

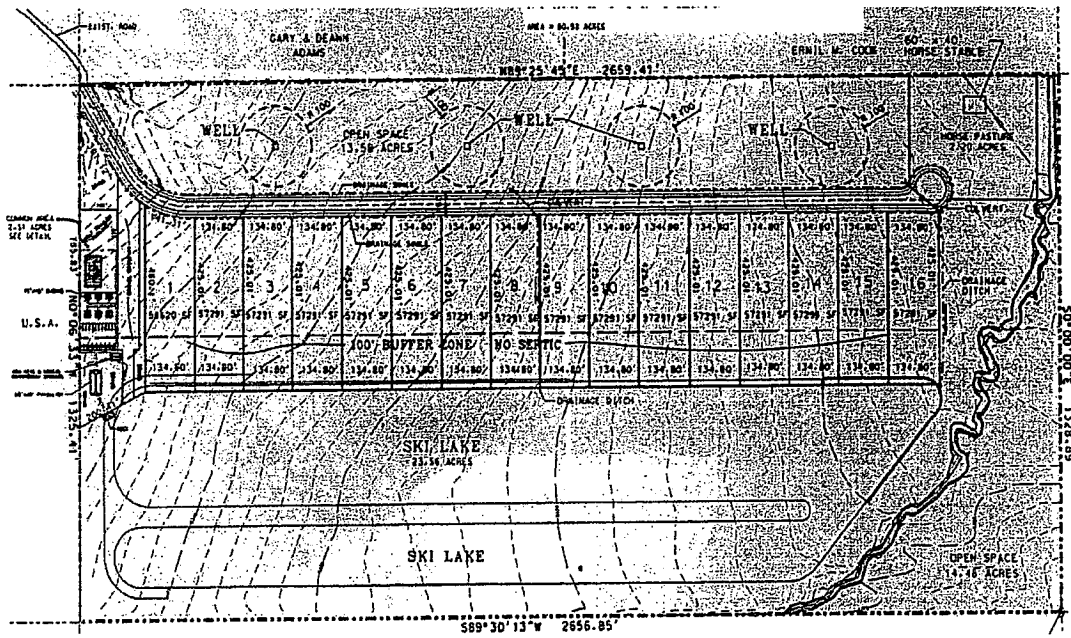


Zoning Map

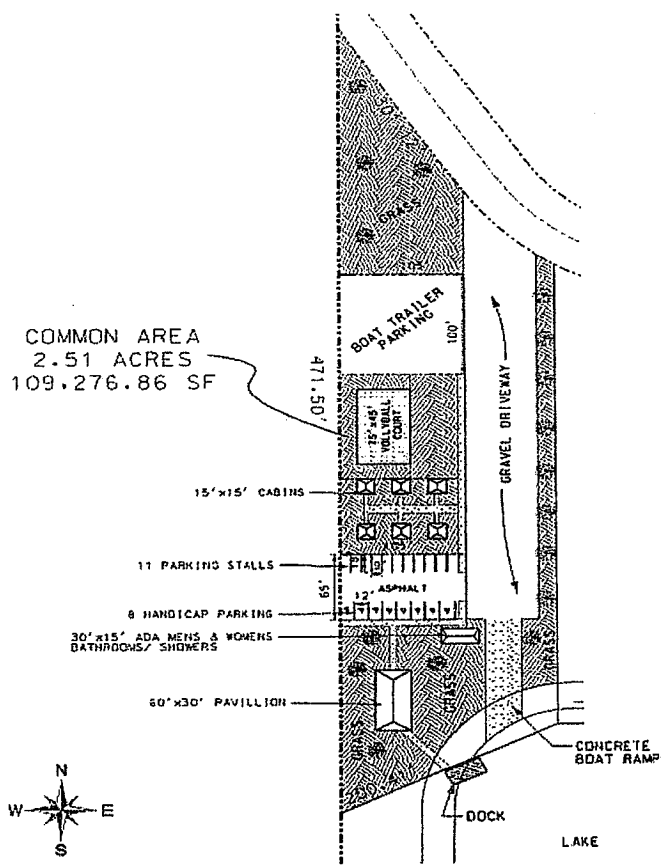
Rezone
+
Concept
Plan
Area



County Road Map



COMMON AREA
2.51 ACRES
109,276.86 SF



*Concept Plan for conservation subdivision
"Last Chance Ski Ranch PUD"*