

ORDINANCE 2003-21

AN ORDINANCE AMENDING THE OFFICIAL ZONING MAP OF TOOELE COUNTY; REZONING CERTAIN PROPERTY IN SECTION 8, TOWNSHIP 1 SOUTH, RANGE 7 WEST IN SKULL VALLEY FROM MU-40 (MULTIPLE USE DISTRICT 40 ACRE MINIMUM) TO C-H (COMMERCIAL HIGHWAY DISTRICT)

THE COUNTY LEGISLATIVE BODY OF THE COUNTY OF TOOELE ORDAINS

AS FOLLOWS:

SECTION I - AMENDMENT: A public hearing having been held thereon and good cause having been found therefor, the official zoning map of Tooele County is hereby amended at Kim Green's request by changing the zoning designation of certain property in Section 8, Township 1 South, Range 7 West, Salt Lake Base and Meridian South of the Skull Valley/Dugway Exit 77 on I-80 from MU-40 (Multiple Use District 40 Acre Minimum) to C-H (Highway Commercial District). The legal description of the property being rezoned is:

Beginning at the Southwest corner of the Northwest 1/4 of the Southeast 1/4 of Section 8, Township 1 South, Range 7 West, Salt Lake Base and Meridian, said corner being North 00°01'36" West 1325.17 feet along the West line of said Southeast 1/4 from the South 1/4 corner of said Section 8, said corner being the Southwest corner of a parcel recorded in the office of the Tooele County Recorder as entry #051370, and running thence North 89°52'33" West 1082.82 feet; thence North 00°04'50" East 458.13 feet; thence South 89°52'33" East 1081.96 feet; thence South 00°01'36" East 458.13 feet to the point of beginning. New description from patent for 2003 year. 11.38 acres.

That portion West of the North-South Rowley to Dugway Highway of the following described real property in Tooele County: Northwest 1/4 of the Southeast 1/4, Section 8, Township 1 South, Range 7 West, Salt Lake Base and Meridian – less 2.66 acres to State Road Commission, – Less 3.92 acres to I-80, balance after 4-88-8. 27.13 acres.

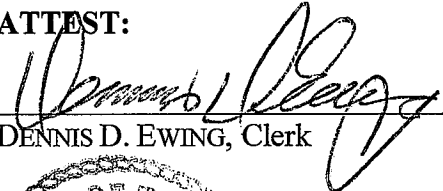
A map showing the area of the rezone is attached hereto and by this reference made a part hereof.

SECTION II - REPEALER. Ordinances in conflict herewith are hereby repealed to the extent of such conflict.

SECTION III - EFFECTIVE DATE. This ordinance shall take effect fifteen (15) days after its passage, provided the same has been published, with the name of the members voting for and against the same, for at least one publication in one issue of a newspaper published in and having general circulation in Tooele County.

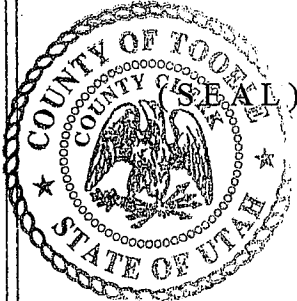
IN WITNESS WHEREOF, the legislative body of Tooele County passed, approved and enacted this ordinance this 7th day of October 2003.

ATTEST:


DENNIS D. EWING, Clerk

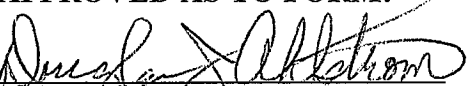
TOOELE COUNTY COMMISSION:


DENNIS ROCKWELL, Chairman



Commissioner Rockwell voted Aye
Commissioner White voted Aye
Commissioner Lawrence voted Aye

APPROVED AS TO FORM:


DOUGLAS J. AHLSTROM
Tooele County Attorney

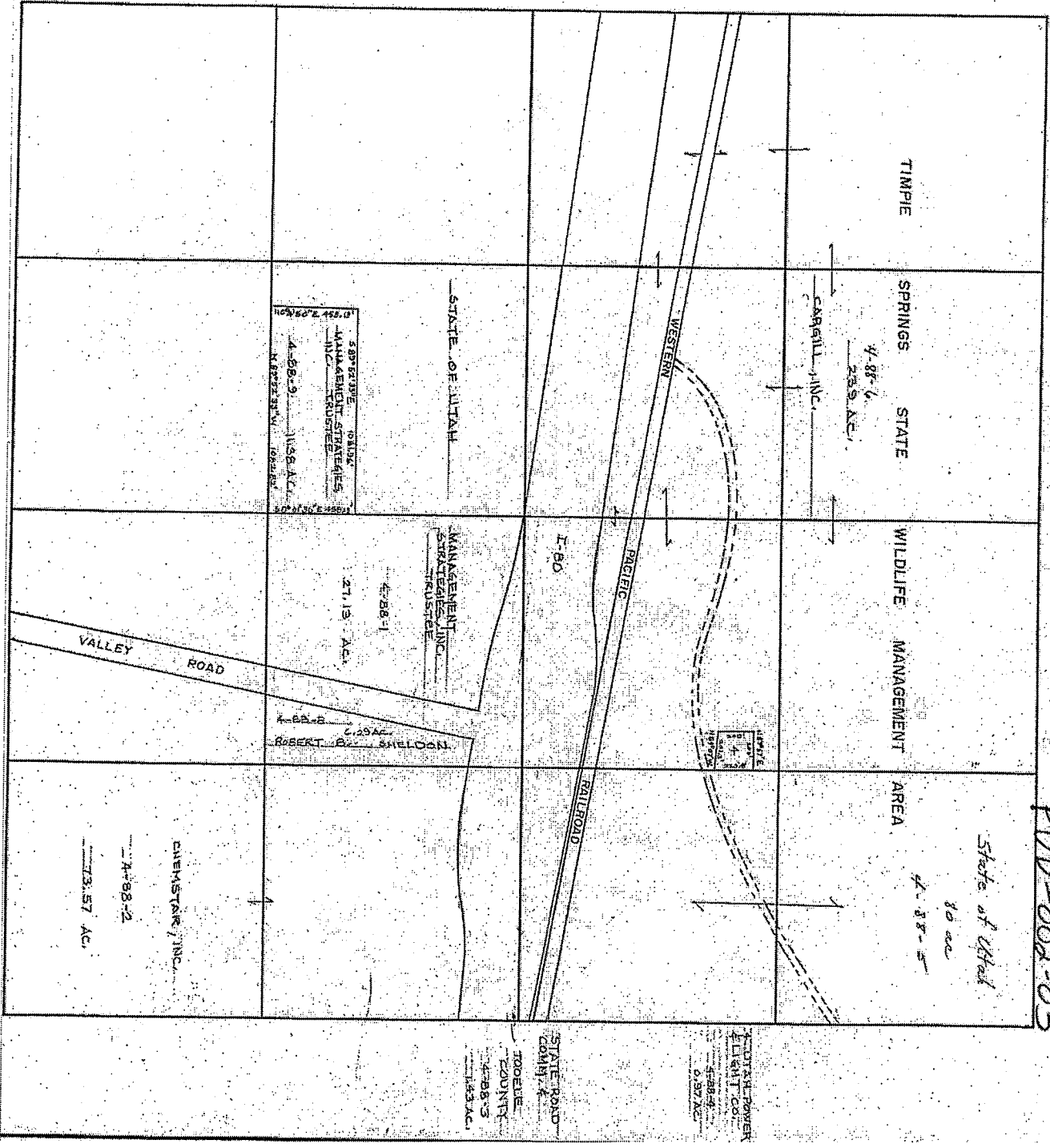
SURVEY

P11D 4002-03

State of Utah

80 ac

4-88-5



TIMPIE

SPRINGS STATE

WILDLIFE MANAGEMENT AREA

AREA

4-88-6
283 AC

CARRILL, INC.

WESTERN

PACIFIC

RAILROAD

F-80

STATE OF UTAH

MANAGEMENT STRATEGIES INC.

4-88-1
271.9 AC

4-88-8 CASAC
ROBERT B. SHELDON

VALLEY ROAD

CHEMSTAR, INC.
4-88-2
73.57 AC

EDDY & POWERS
LIGHT CO.
4-88-4
0.57 AC

STATE ROAD
COMPANY
ROBERT
COUNTY
4-88-3
1.53 AC

3-88-9
4-88-9
115.6 AC
MANAGEMENT STRATEGIES
INC.
4-88-9
115.6 AC