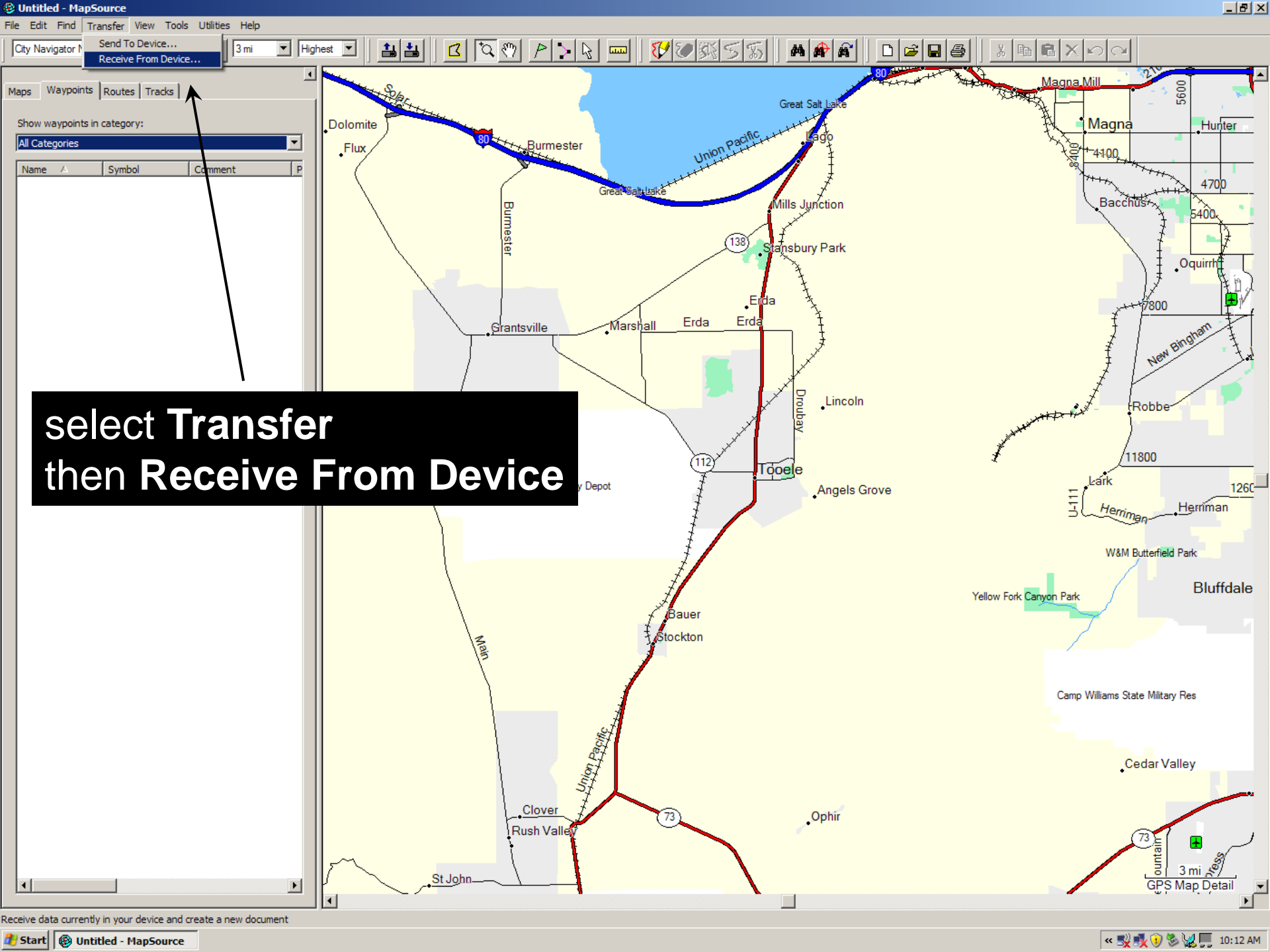
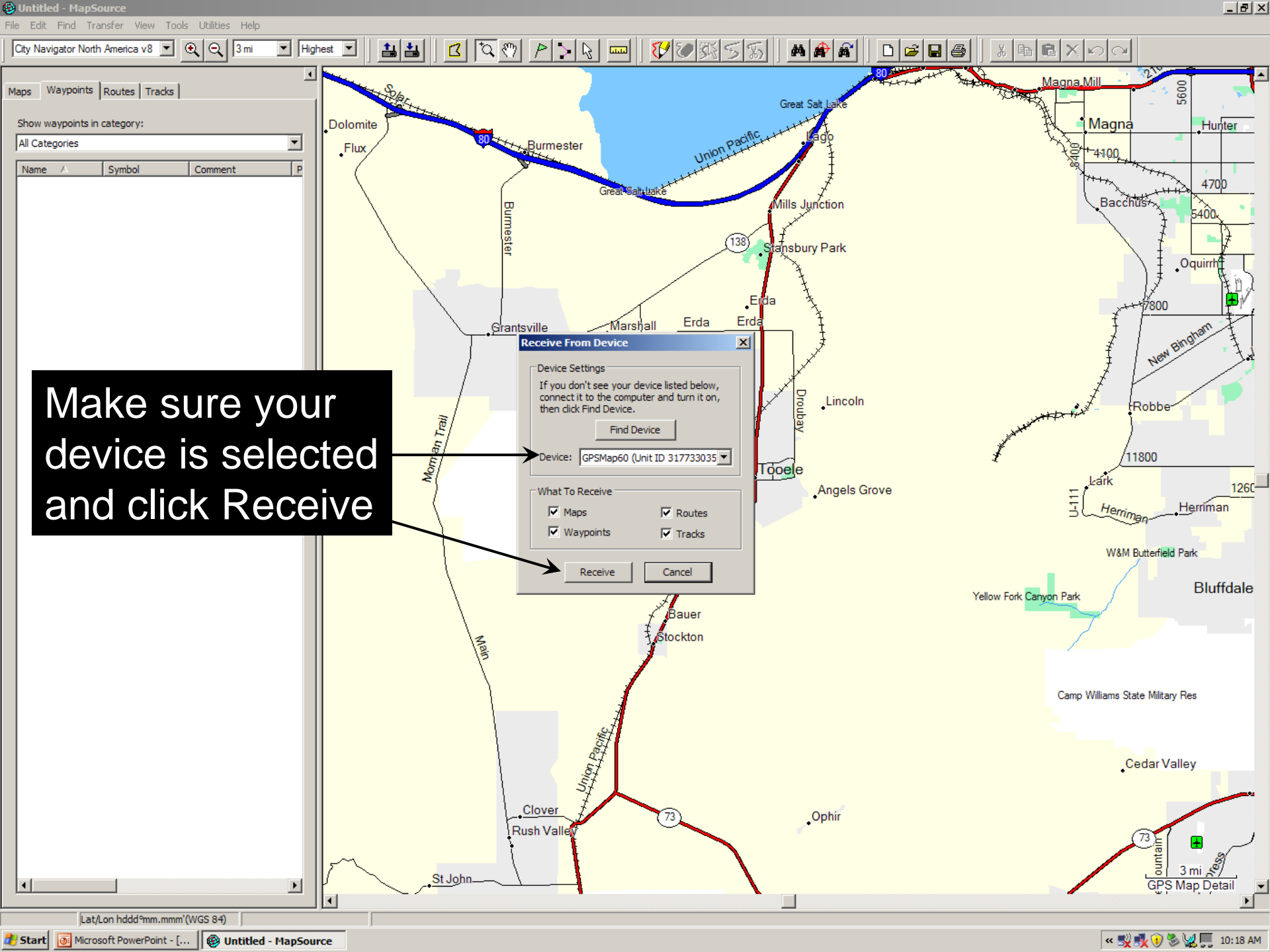
A close-up photograph of a bumblebee on a pink flower. The bee is positioned on the left side of the frame, facing right. It has a fuzzy, yellow and black body. Its legs are visible, and it appears to be interacting with the flower. The flower has many pink, pointed petals. The background is a clear blue sky.

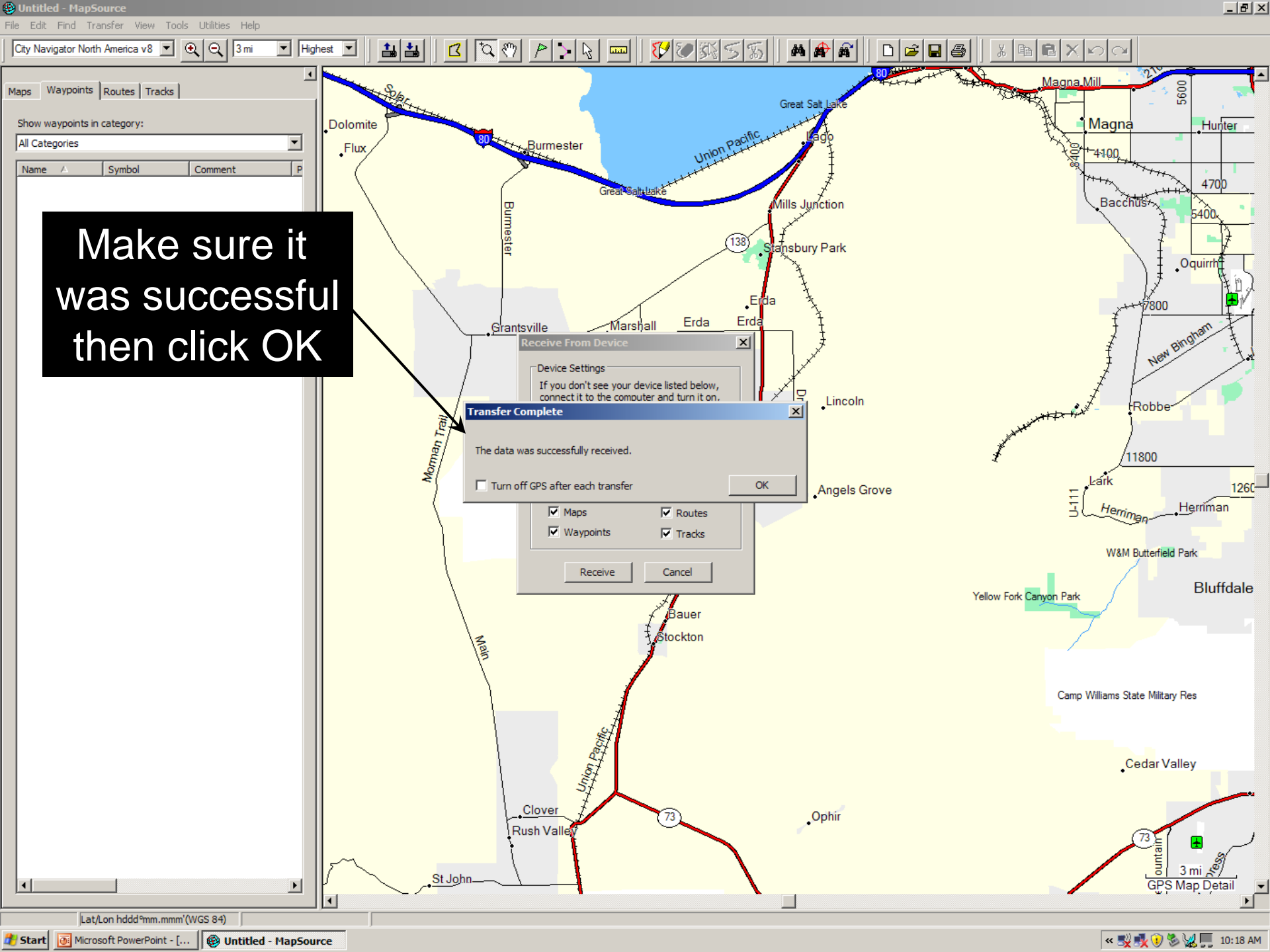
# MapSource Trip and Waypoints Manager By Garmin



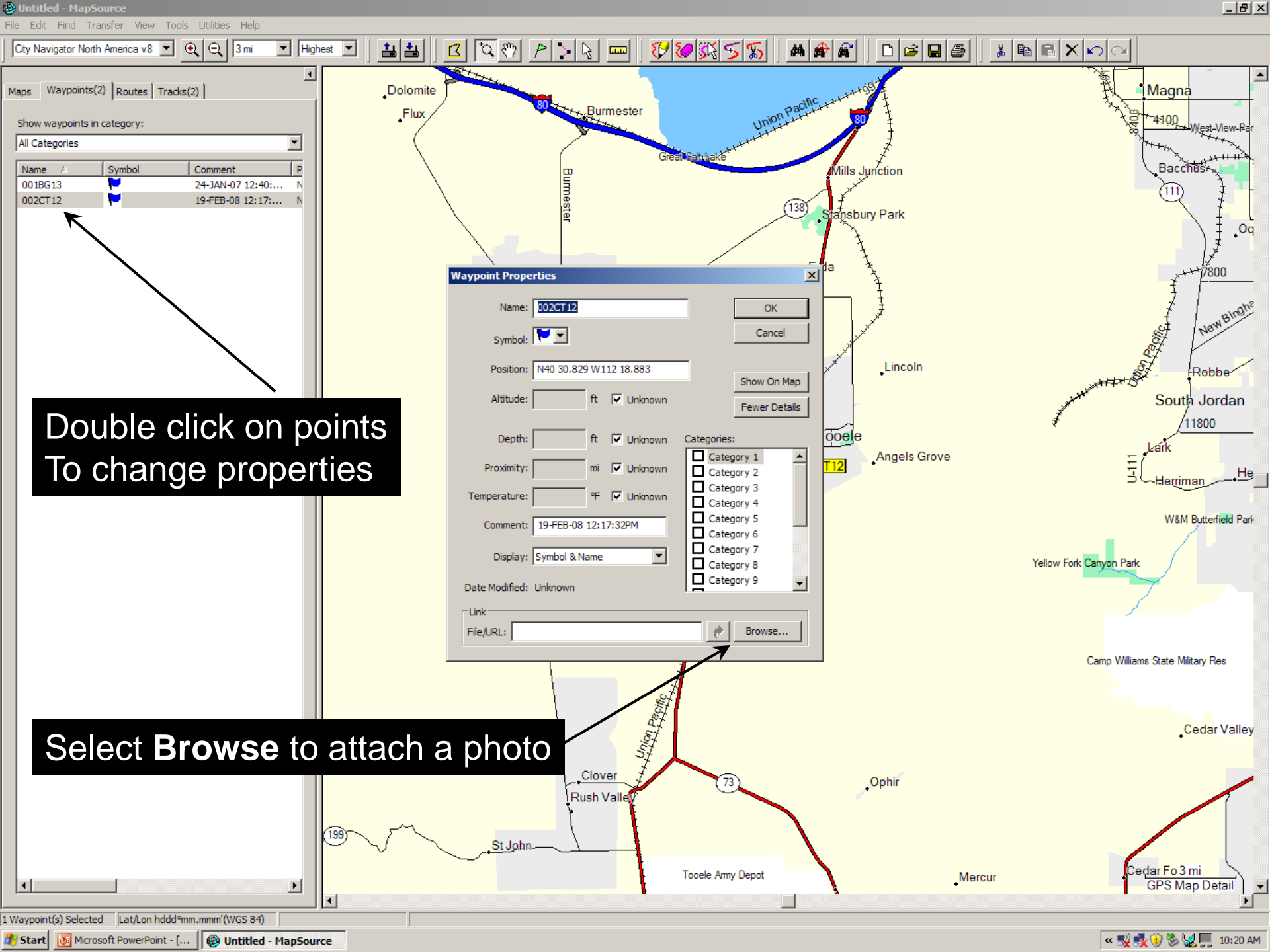
select Transfer  
then Receive From Device





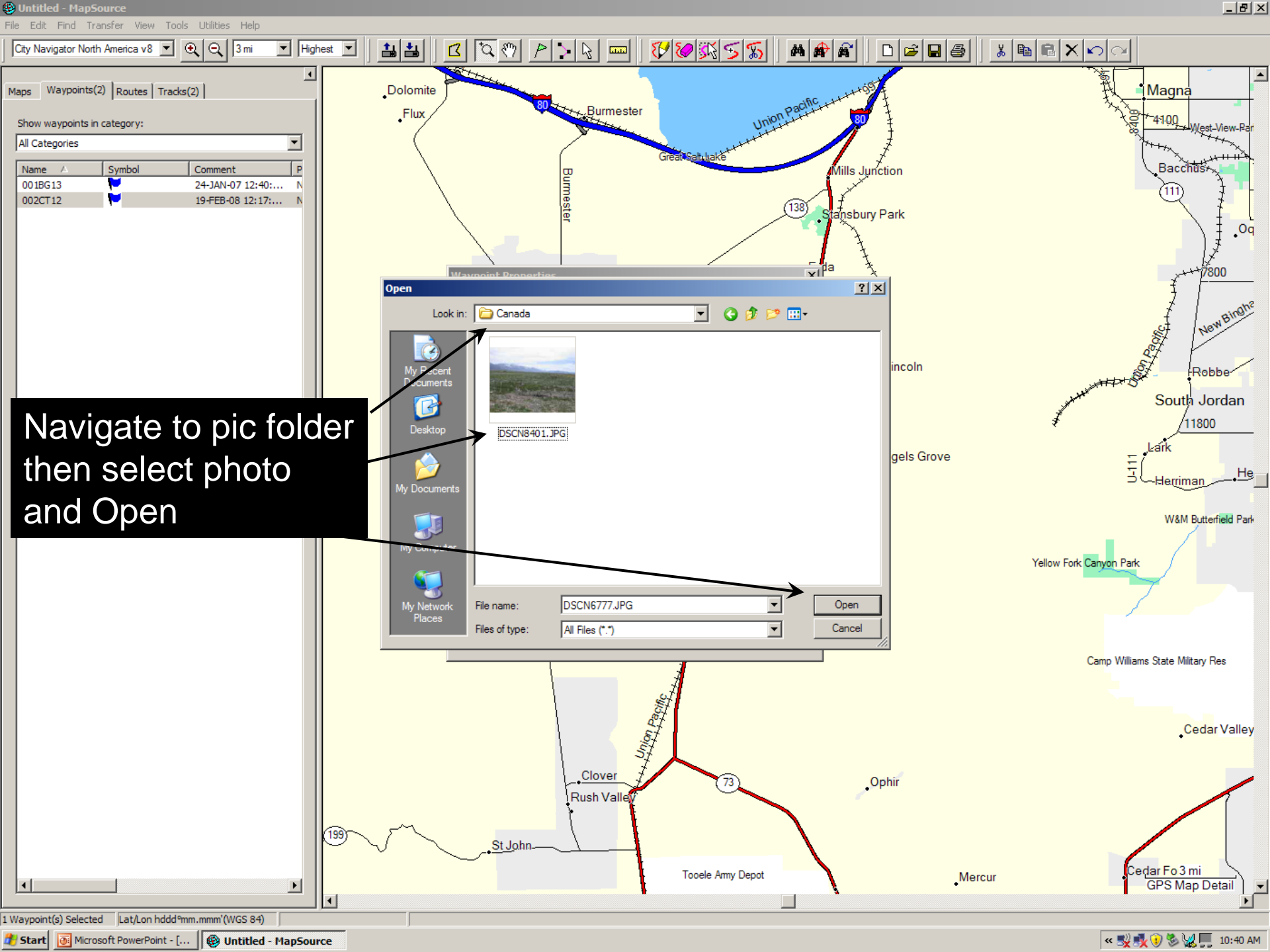


Make sure it  
was successful  
then click OK



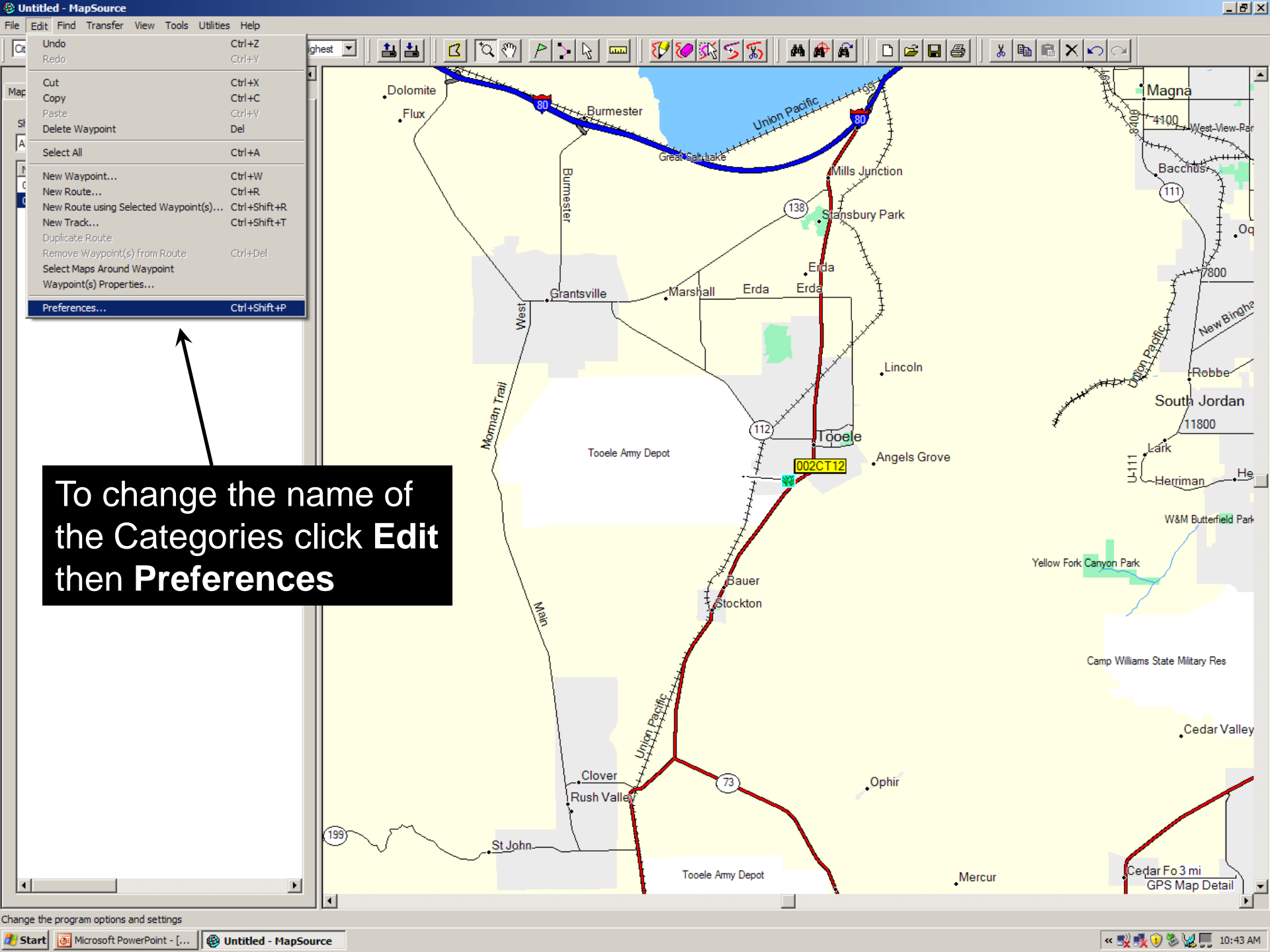
Double click on points  
To change properties

Select Browse to attach a photo



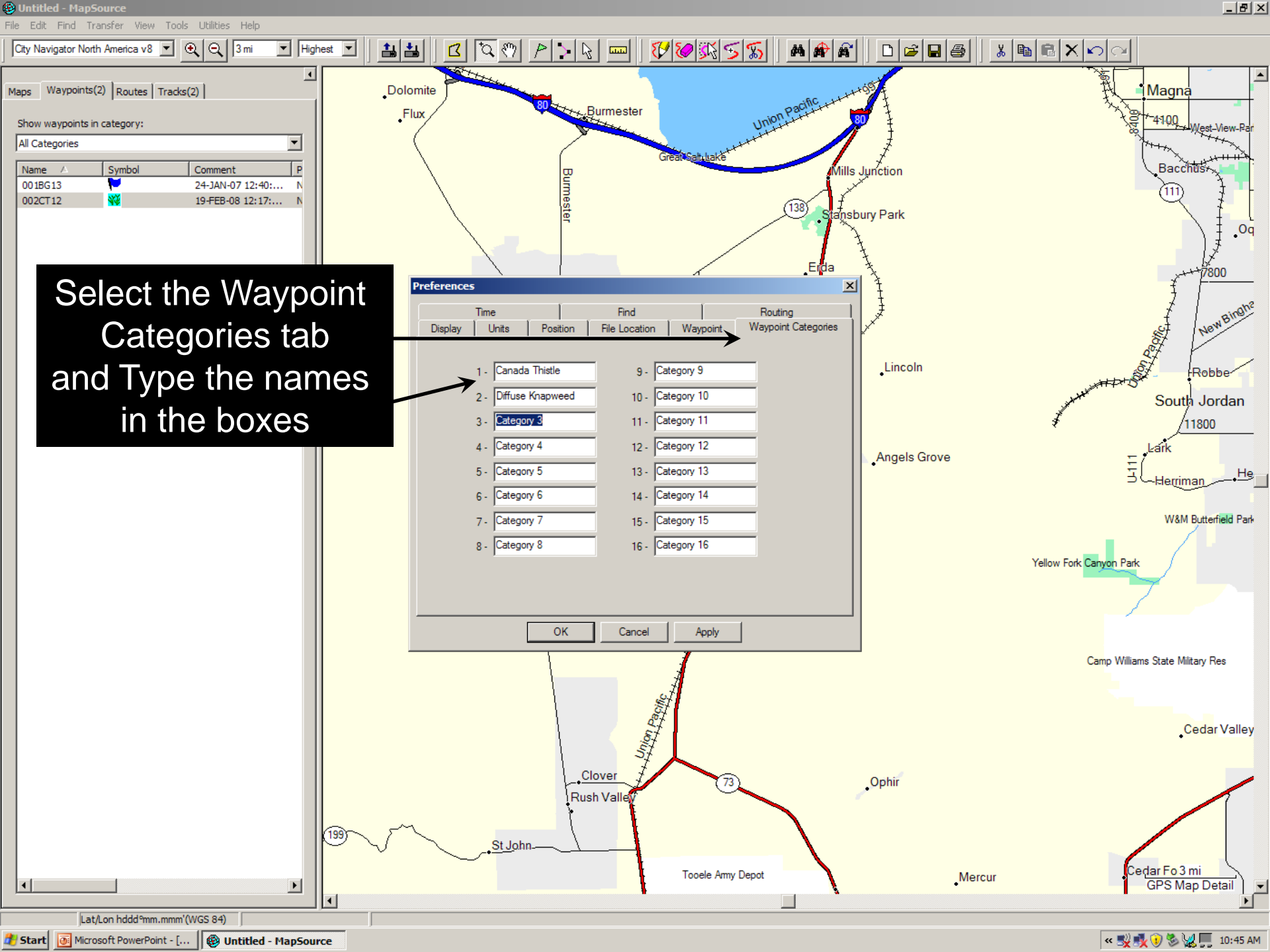
Navigate to pic folder  
then select photo  
and Open

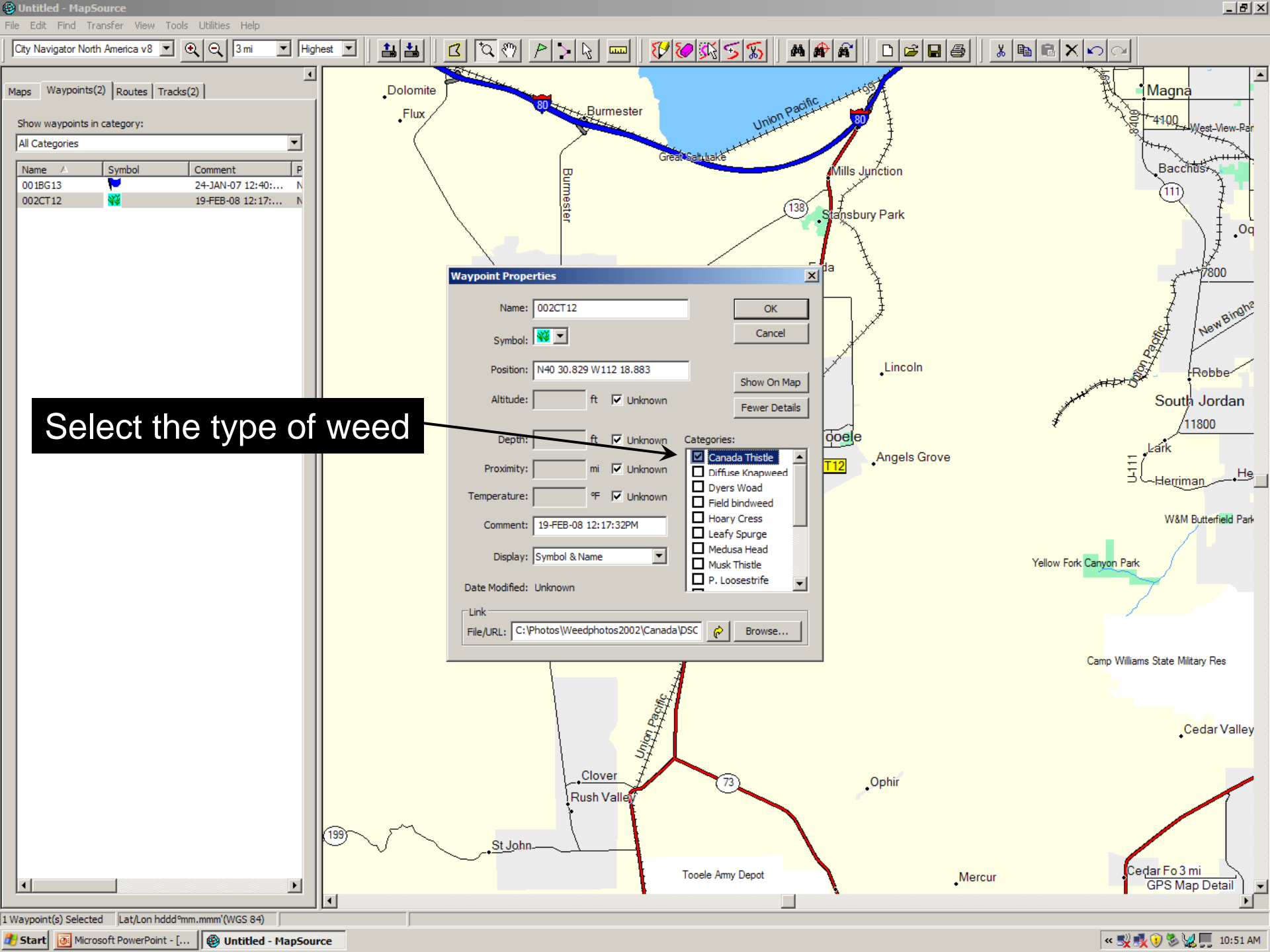




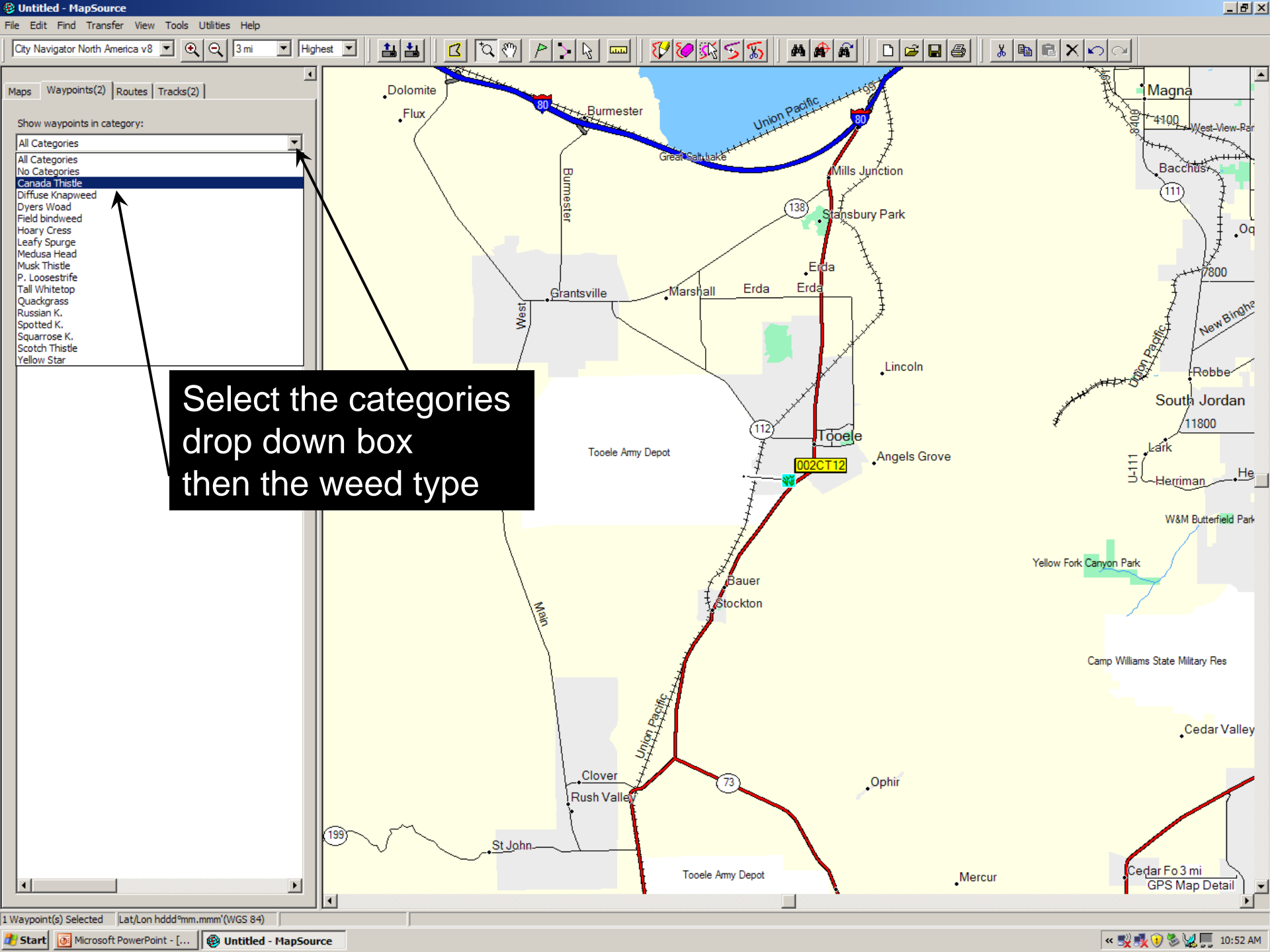
To change the name of  
the Categories click **Edit**  
then **Preferences**

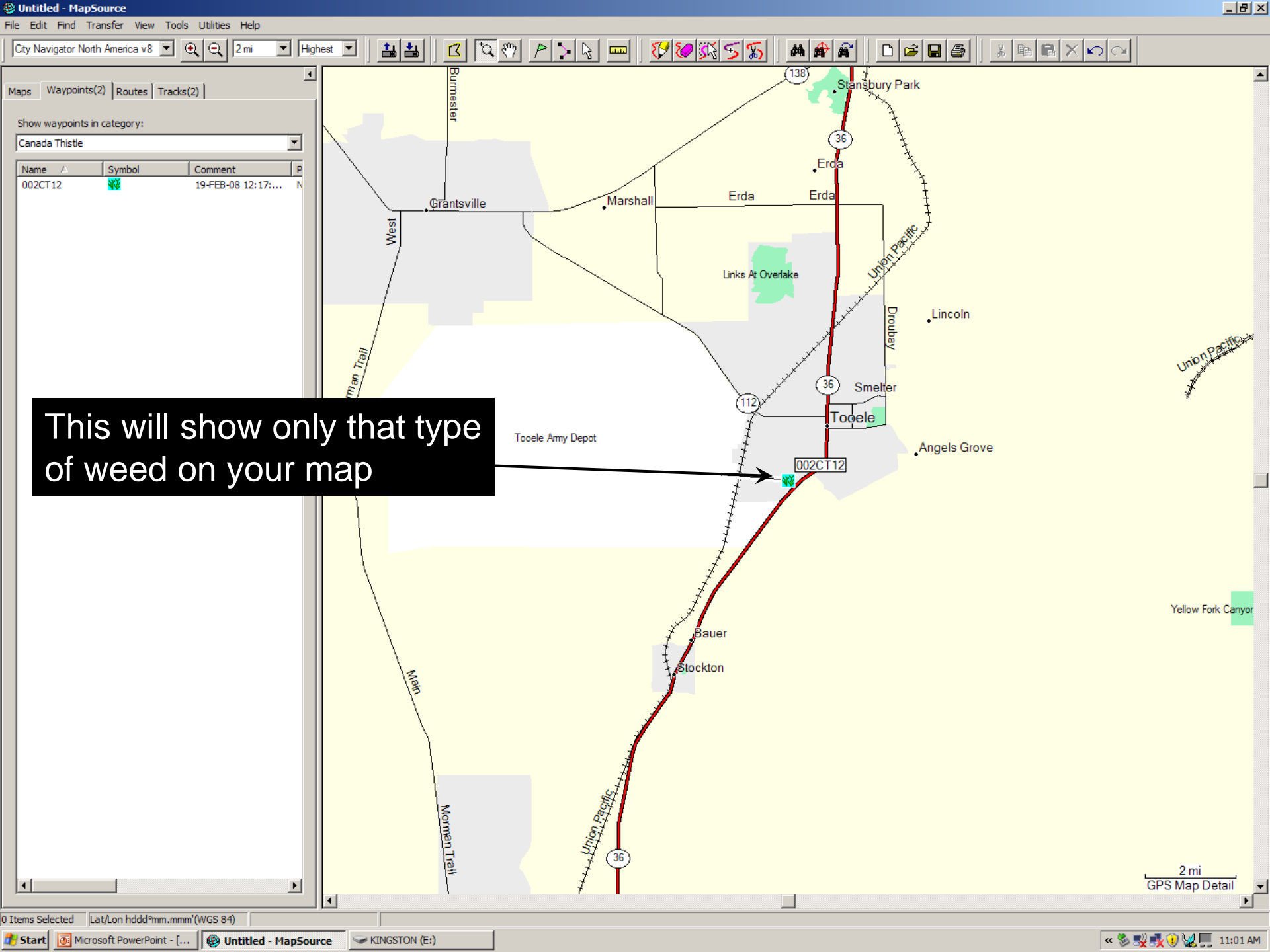






Select the type of weed



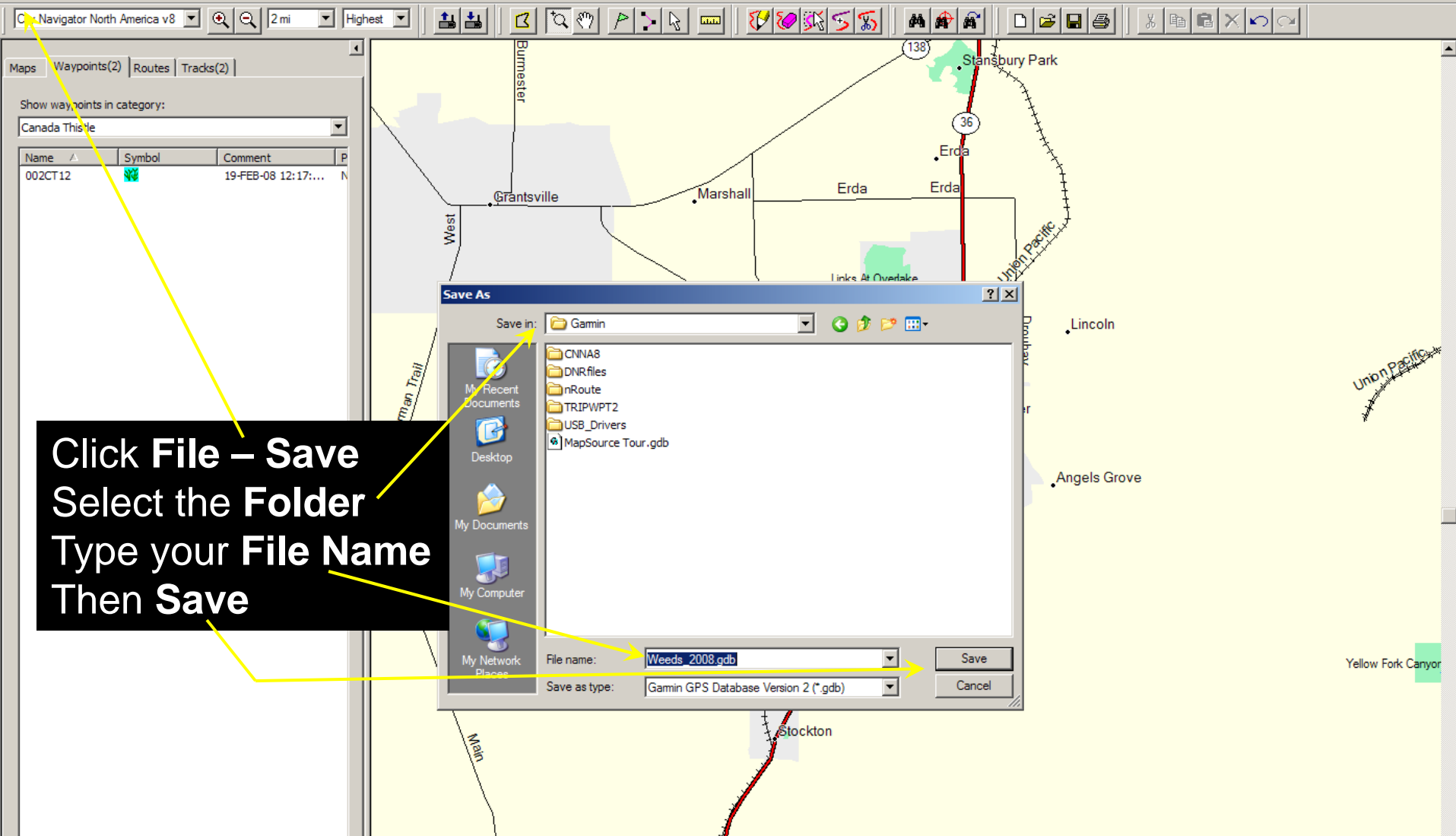


This will show only that type  
of weed on your map

Show waypoints in category:  
Canada Thistle

Name	Symbol	Comment	P
002CT12		19-FEB-08 12:17:...	N





To add more Waypoints you need your project already open, then transfer new data.