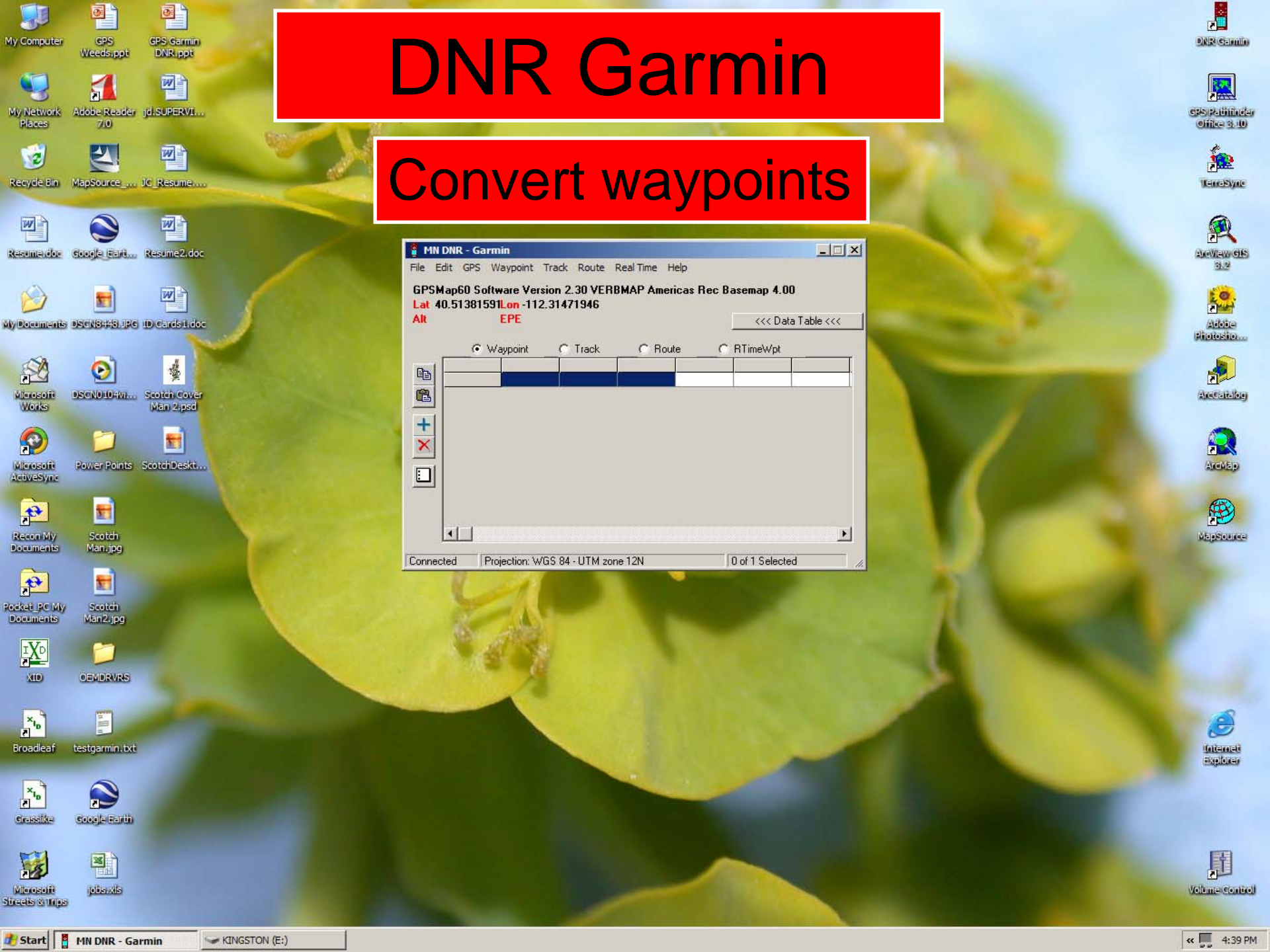
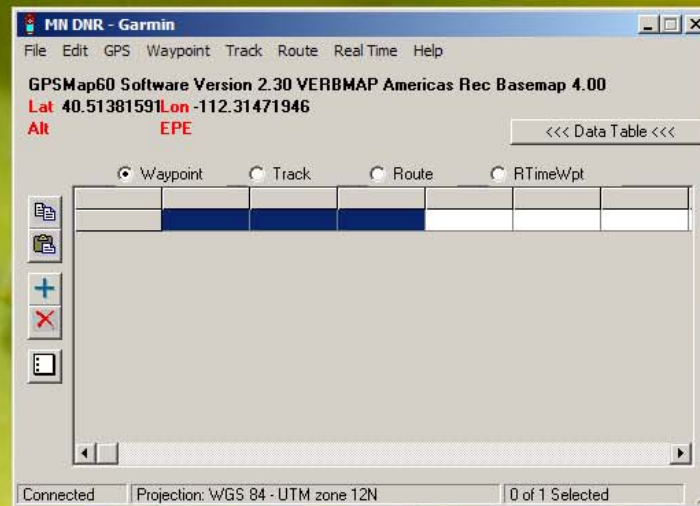
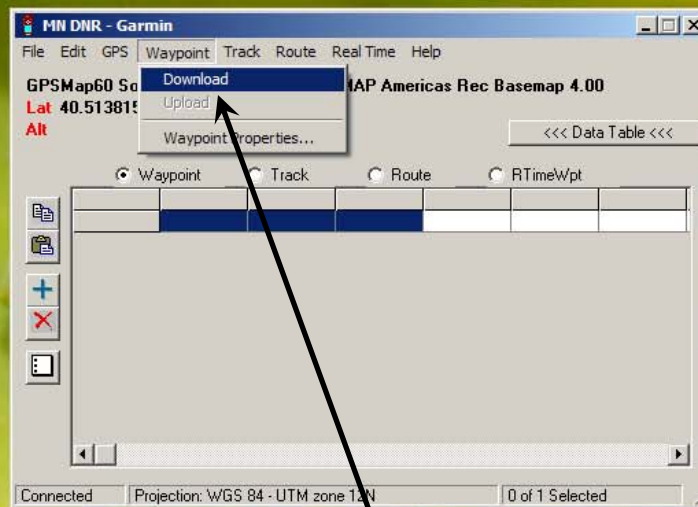
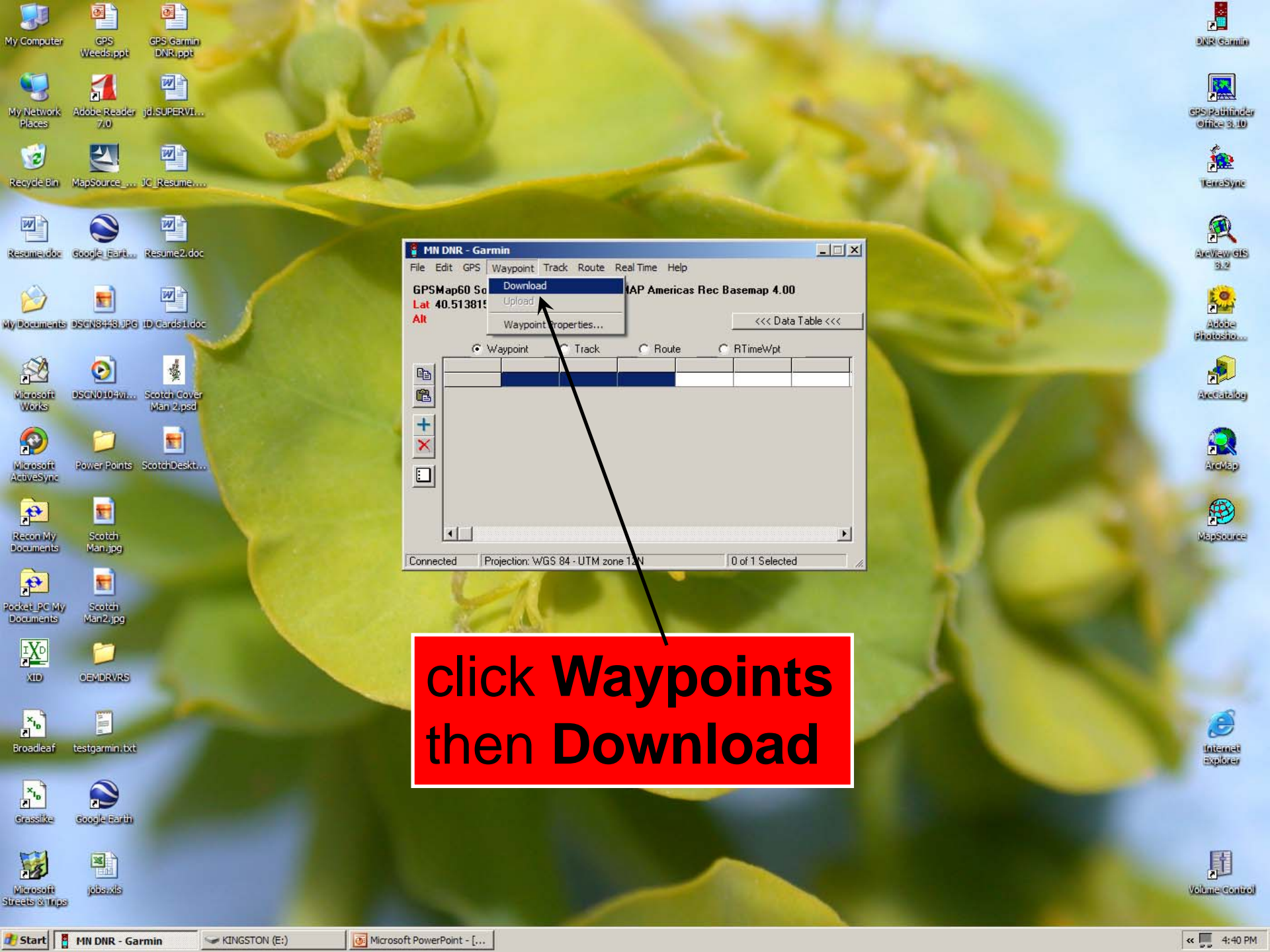


# DNR Garmin

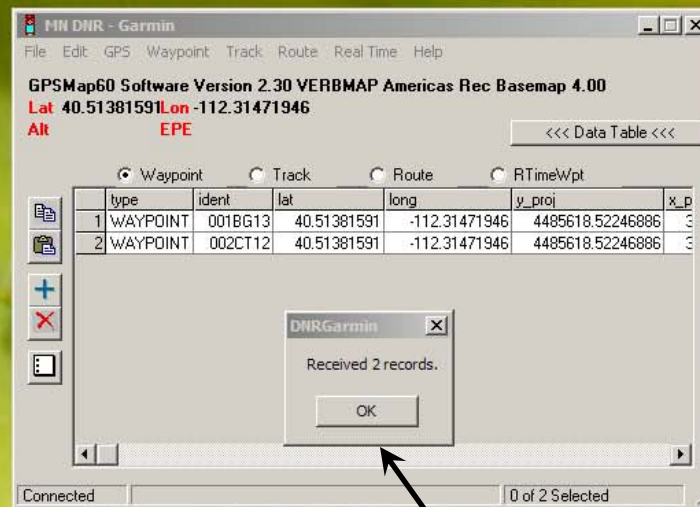
## Convert waypoints



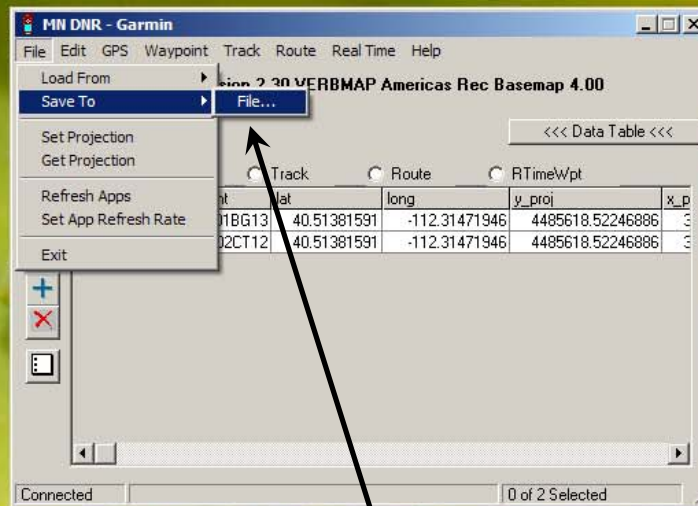
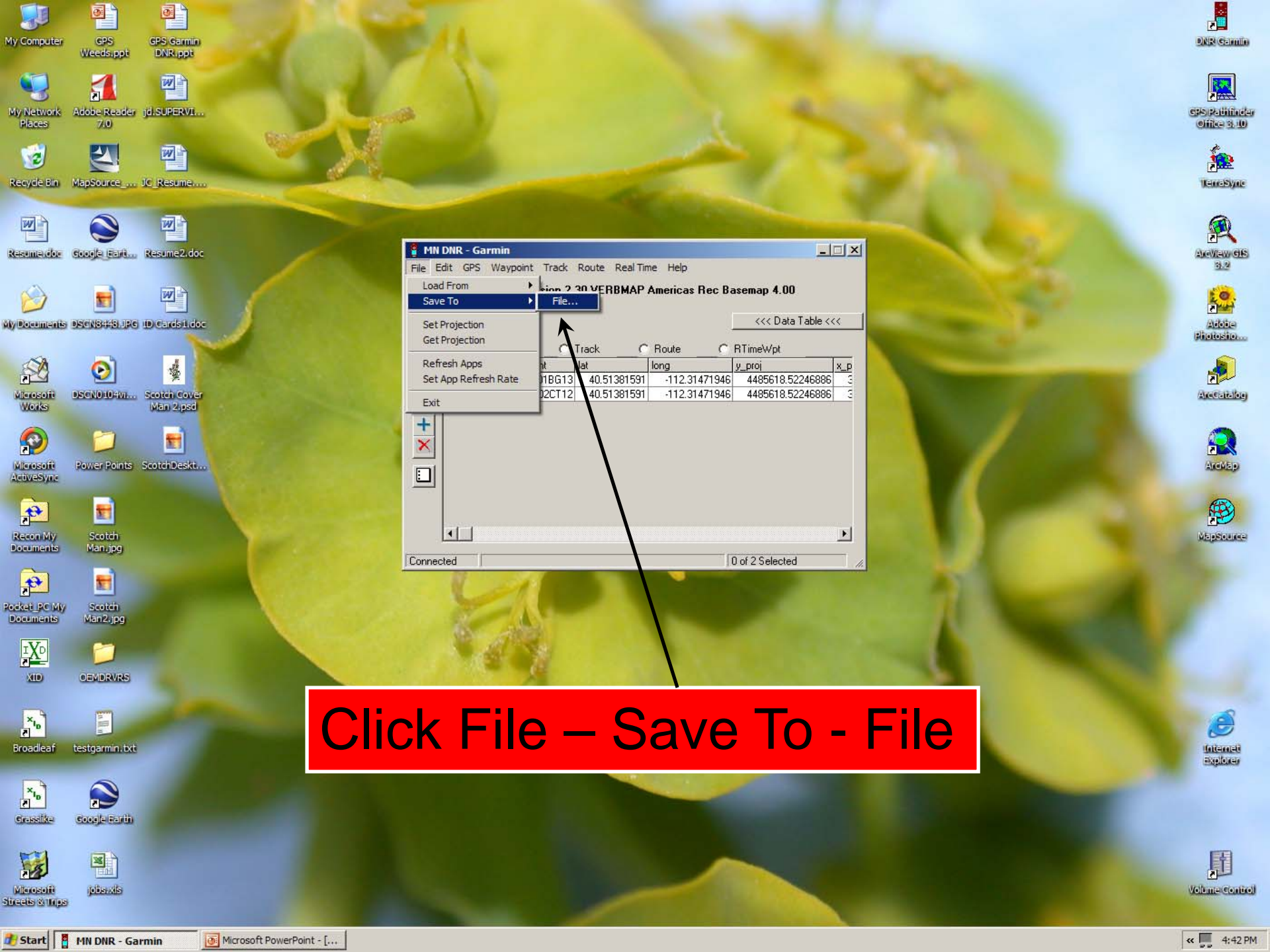


click **Waypoints**  
then **Download**



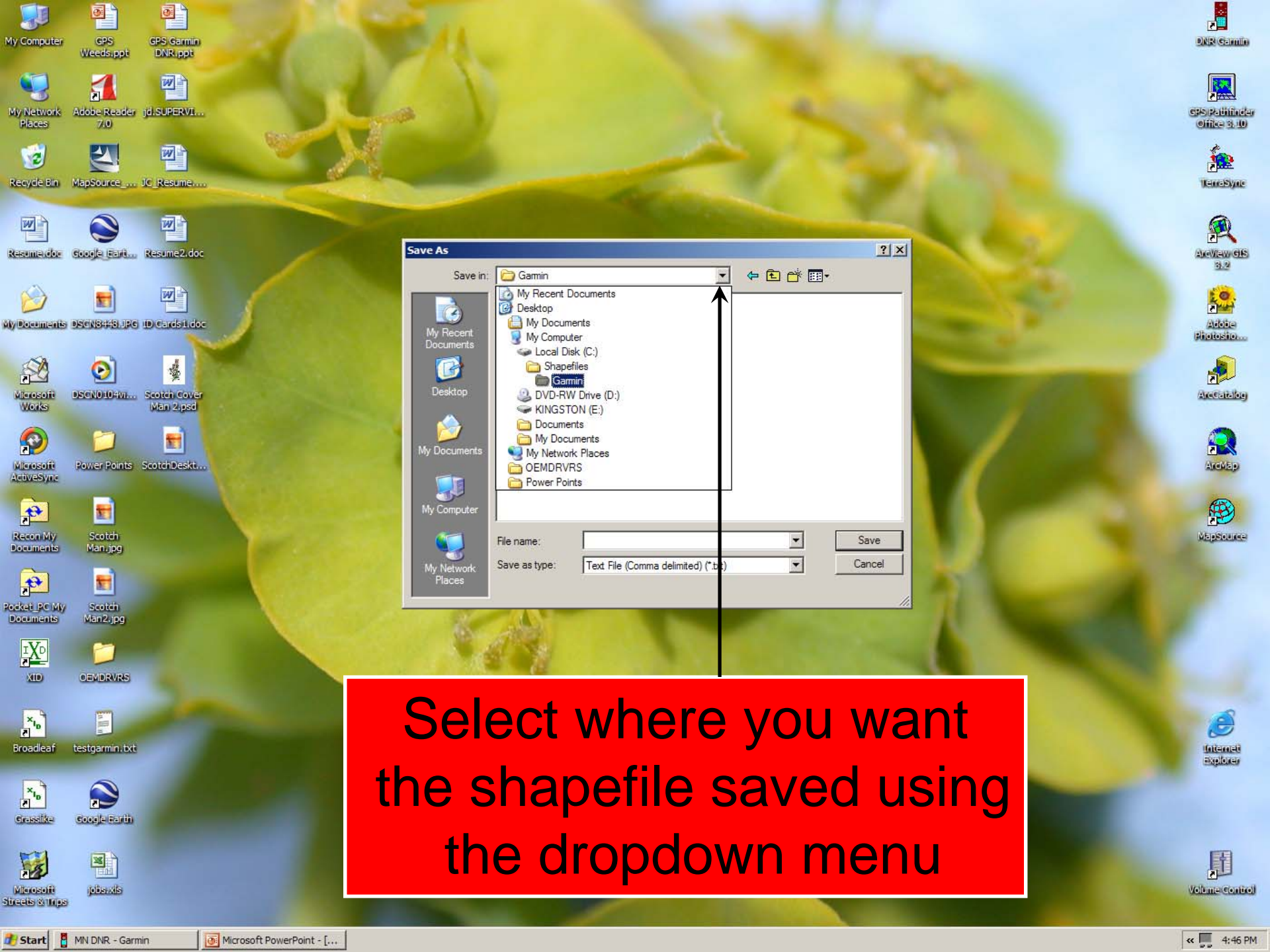


**Verify they were received**



Click File – Save To - File





Save As

Save in: Garmin

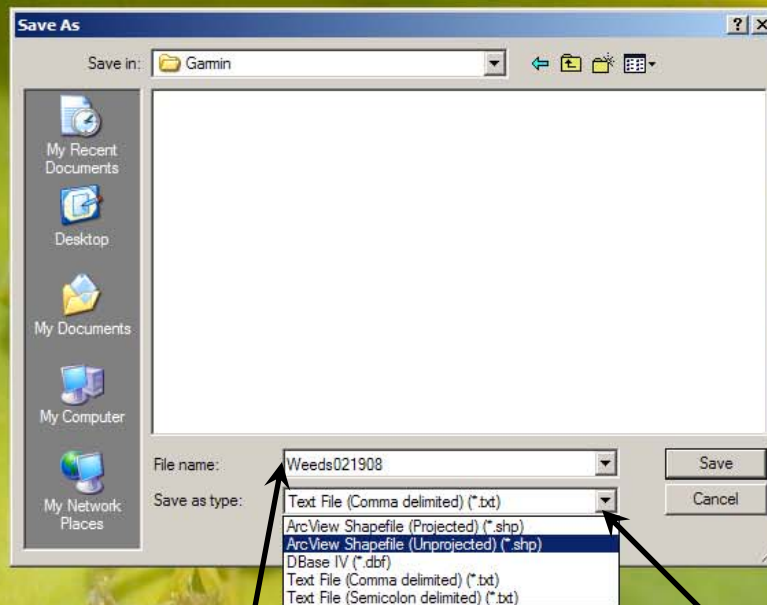
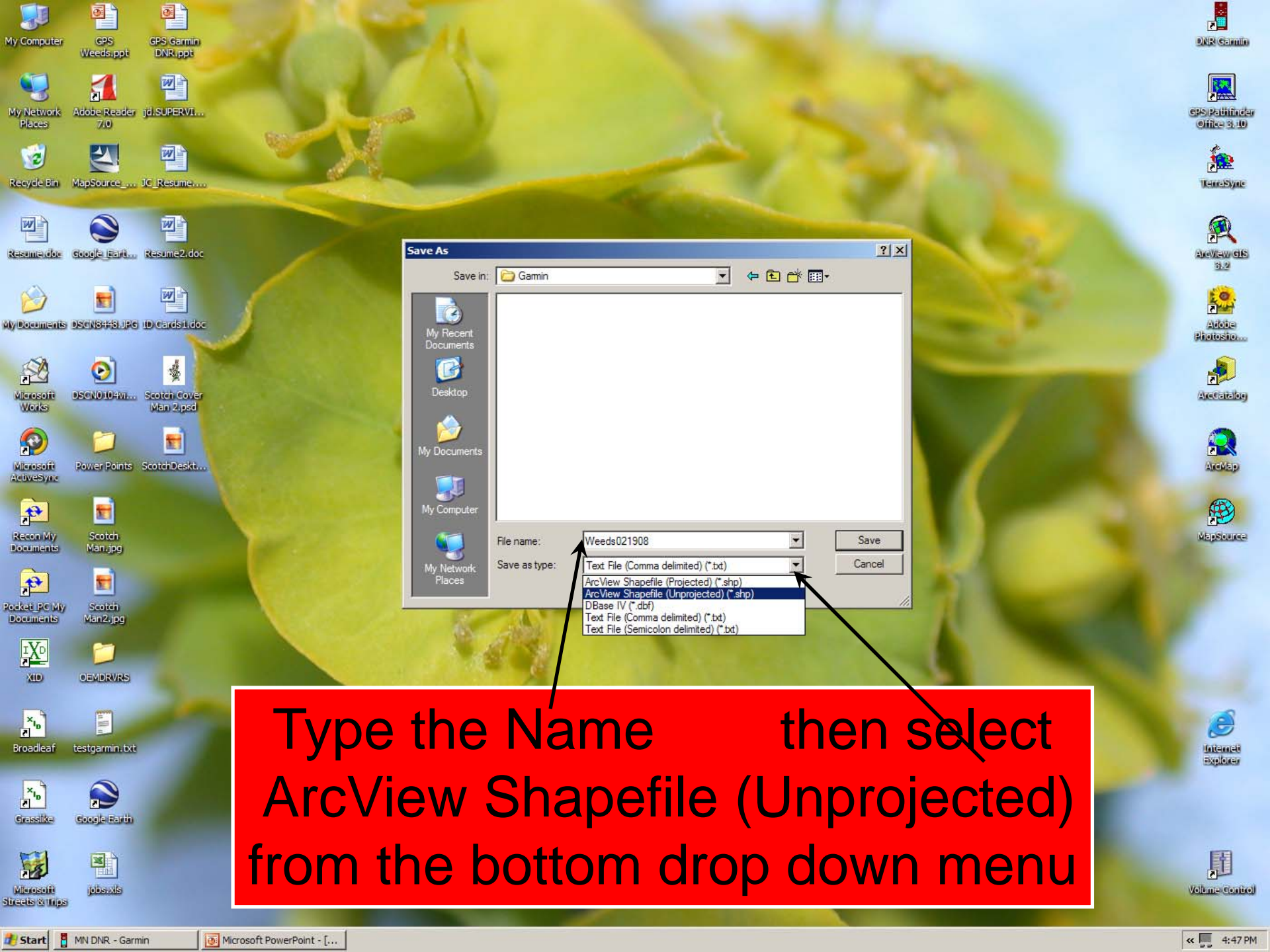
- My Recent Documents
- Desktop
- My Documents
- Local Disk (C:)
  - Shapefiles
  - Garmin
- DVD-RW Drive (D:)
- KINGSTON (E:)
- Documents
- My Documents
- My Network Places
- OEMDRVRS
- Power Points

File name:

Save as type: Text File (Comma delimited) (\*.txt)

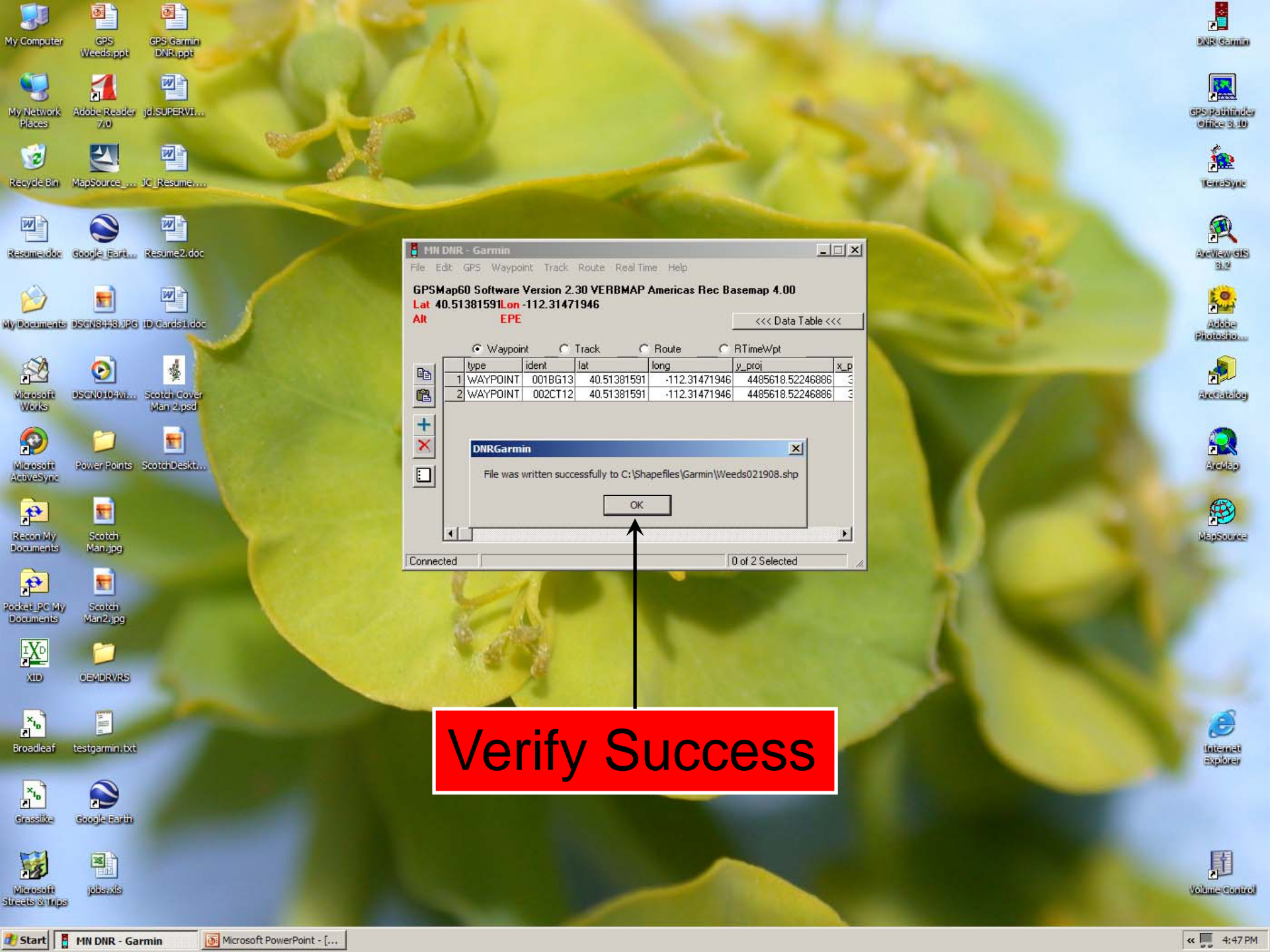
Save Cancel

Select where you want the shapefile saved using the dropdown menu



Type the Name then select  
ArcView Shapefile (Unprojected)  
from the bottom drop down menu





**MN DNR - Garmin**  
File Edit GPS Waypoint Track Route Real Time Help

**GPSMap60 Software Version 2.30 VERBMAP Americas Rec Basemap 4.00**  
**Lat 40.51381591 Lon -112.31471946**  
**Alt EPE**

<<< Data Table >>>

☒ Waypoint ☐ Track ☐ Route ☐ RTIME/Wpt

	type	ident	lat	long	y_proj	x_p
1	WAYPOINT	0018G13	40.51381591	-112.31471946	4485618.52246886	3
2	WAYPOINT	002CT12	40.51381591	-112.31471946	4485618.52246886	3

**DNRGarmin**

File was written successfully to C:\Shapefiles\Garmin\Weeds021908.shp

OK

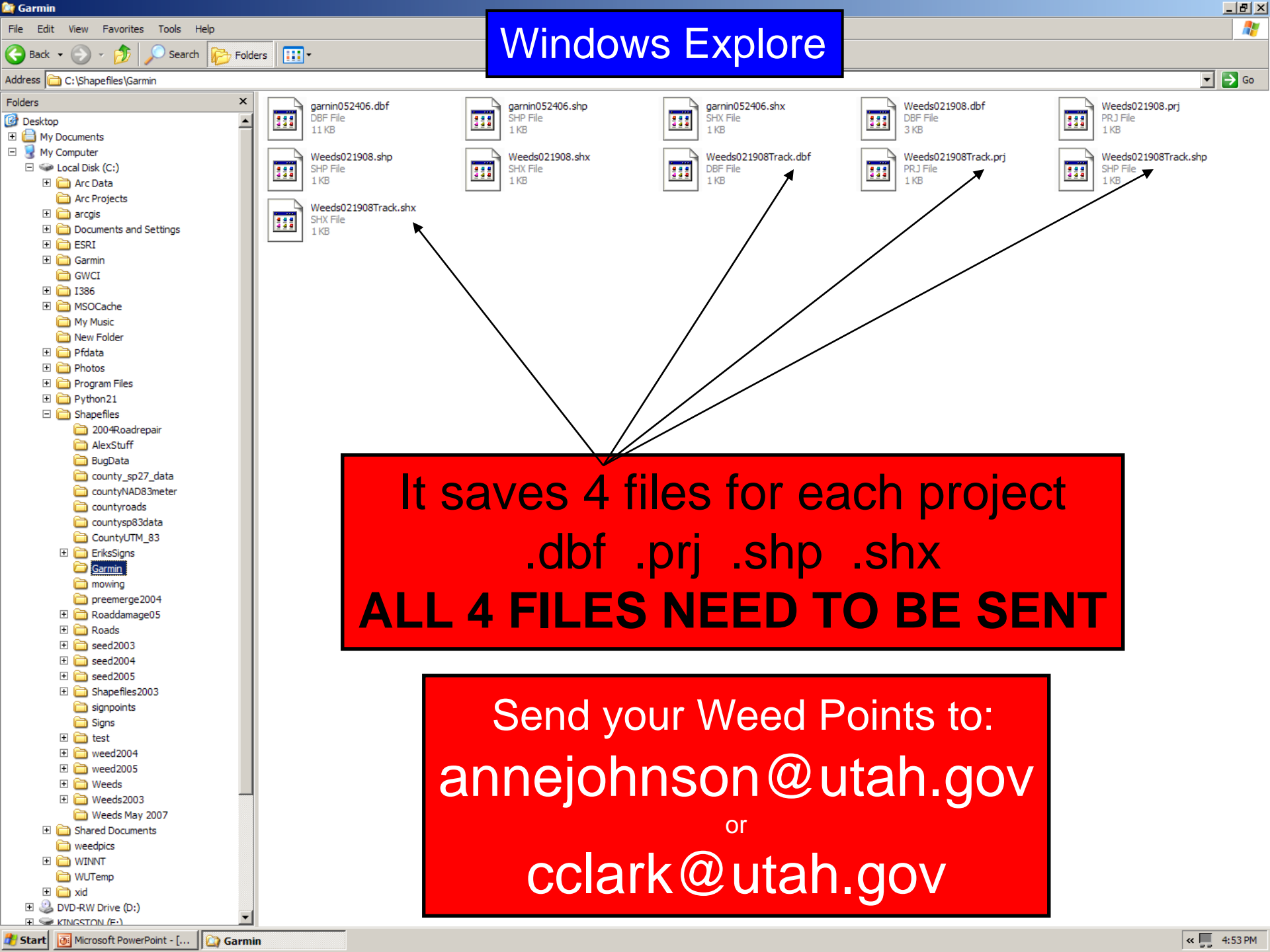
Connected 0 of 2 Selected

Verify Success



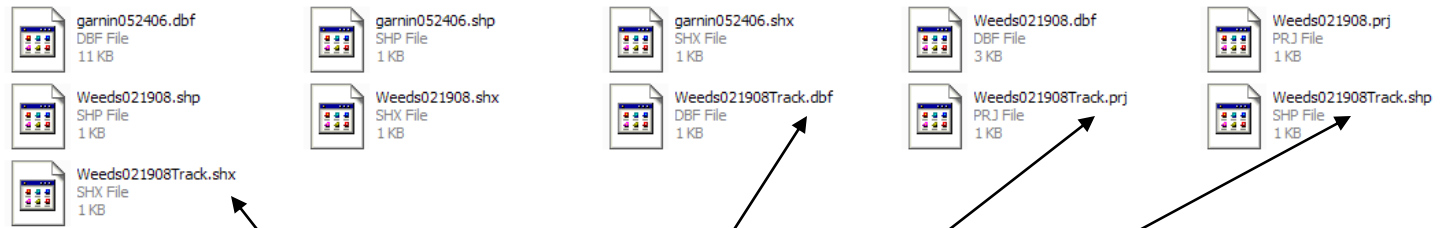
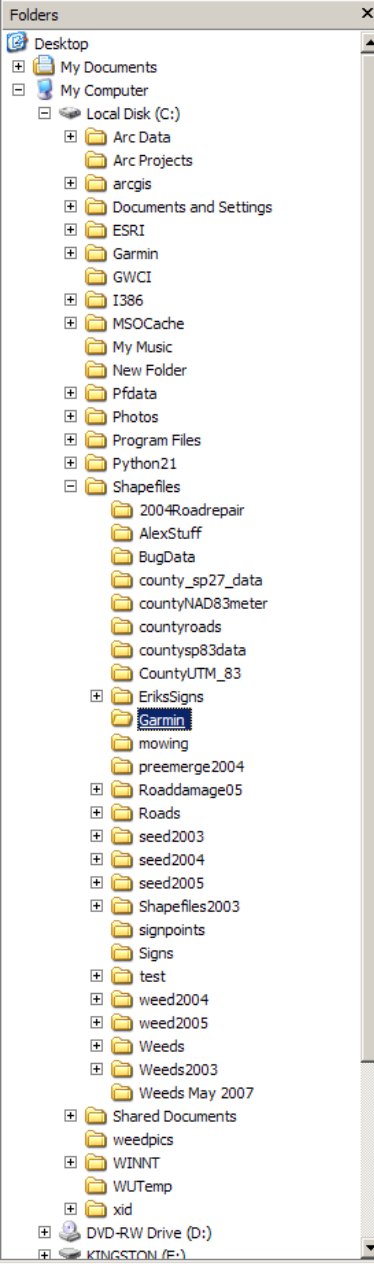
Convert Tracks the same  
Procedure with **Track** option





# Windows Explore

Address



It saves 4 files for each project  
.dbf .prj .shp .shx  
**ALL 4 FILES NEED TO BE SENT**

Send your Weed Points to:  
**annejohnson@utah.gov**  
or  
**cclark@utah.gov**